

eeels.

s not prepared for his
biting foe.

ET CLOTHS.

who find it difficult to secure
want in a Readymade Coat
our stock of Blanket Cloth
reen, Navy, Cardinal, Khaki
20 per yard.

NAPS.

only of Brown and Navy Nap
length. Value for \$6.00 per yard
80 yard.

ITURE!

need for us to go into
scription with regard to
or quantity of Furni-
ck, it is already well
er the Island.

announce the opening of
ts. We are ready to fur-
rooms, Dressing-rooms,
Dining-room, Drawing-
Library, Living-room,
itchen with everything
make your home abso-
t in every detail.

want just what is new-
in Furniture, remember
below is that of the finest
thers in Newfoundland.

re & Portrait Co.
St. Johns.

ving
ec-

S

.

S.

g to

om-

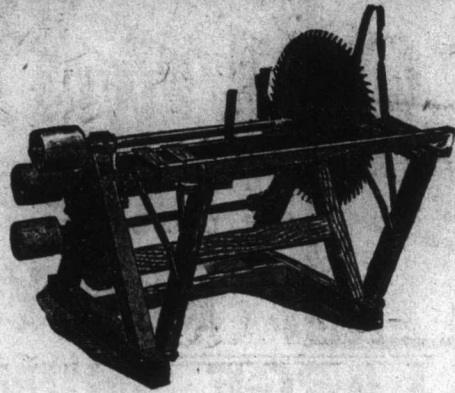
are

aced

e.

launder,
Clothier, St. John's,

NOTICE.—Correspondents are requested to accompany contributions with their NAMES, not necessarily publication, but as a guarantee of good faith. The editor reserves the right to accept any matter less this rule is adhered to.



Our line of Wood and Pole Sawing Machines is most complete, thoroughly up-to-date and strictly high grade in every particular. They cover every style of both tilting table and sliding table machines, with balance wheel placed on end of mandrel or on independent shaft under the frame. Write for prices.

Combination Wood-Working Machines

For Carpenters, Contractors, Boat Builders and Waggon Builders.

We can furnish any combination of machines, including Circular Saws, Jointer, Band Saws, Two Boring Machines, Hollow Auger, Felloe Boring and Spoke Tenoning Machines.



Write for prices on Rotary Mills, Planers, Shingle Machines, Lath Machines, Edgers, Trimmers, Saws, Belting, Mandrels, Pullies, Shafting, etc.

MAIN ELECTRIC LIGHT.

Plants for Churches, Homes, Institutions, Stores, Factories and small town or village lighting, afford conveniences, pleasures and comforts of home that cannot be derived from any other source.

The satisfaction of being able to have light instantly and with absolute safety, in the home or in any other building, or on the grounds adjacent, without going out to each lamp, but from the snap of a switch, rain or shine, in warm weather or cold, and any hour of the night or day and all without matches or flame, is only a suggestion of the almost innumerable advantages of owning one's own Electric Lighting Plant.

Main plants will operate on gasoline or kerosene and may be operated or cared for by a woman or boy with perfect safety.

Write for a copy of the forty-page Main Catalog; it's free for the asking.

Vital Protecto Spark Plugs.

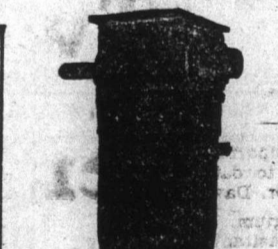


"Plugs is plugs" as a rule. The Protecto, as you will see, is different—a new and patented invention.

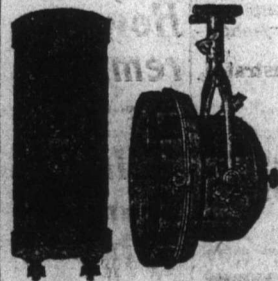
If your wrench slips you don't break or crack the porcelain, because the porcelain is protected all over with a steel shell.

Notice the visible gap—you can always see the spark and adjust your coil or magnet for best efficiency.

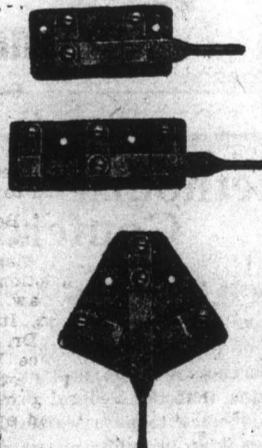
PRICE, \$1.50 EACH, any size.



Round M. & C. Coils, \$2.50.
Search Light, \$15.00.



Magnets for J. S. or M. & O., \$2.00.



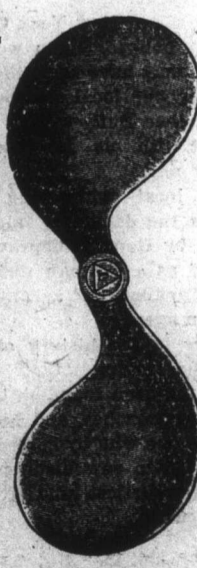
We handle Quick Action Switches as illustrated above. They are absolutely the best.

Price, Single . . . 35c.
Price, Double . . . 45c.
Price, No. 4 Dbl., 50c.

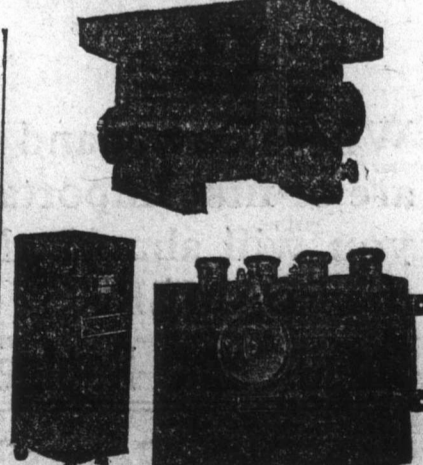
Accessories.

We have a good stock of Wrenches and other Tools, Batteries, Spark Coils, Switches, Wire, Spark Plugs, Oilers, Grease and Oil Guns, Stuffing Boxes, Lag Screws, Hose, Hose Clamps, etc., and we are expecting a stock of Propellers, Magnetos, Bronze Shafting, Iron and Brass Pipe and Fittings, Stop Cocks, Priming Cups, etc., Lubricators, Enamel, Mufflers, Whistles and Engine Room Gongs. You will find our goods satisfactory and the prices reasonable.

PROPELLERS.
The efficiency of a boat or an engine depends entirely on the propeller. No matter how good your engine or the boat, the speed or towing power depends ultimately on the propeller. Write for our prices.



Our line of Batteries, Ammeters and Volt Ammeters, also Battery Connectors is complete and the price is right.



We handle the Kingston line of Coils and Magnetos. They are standard and high grade in every particular.

We can supply your wants for any article needed in connection with Gasoline, Kerosene or Oil Engines, Machinery and Supplies.

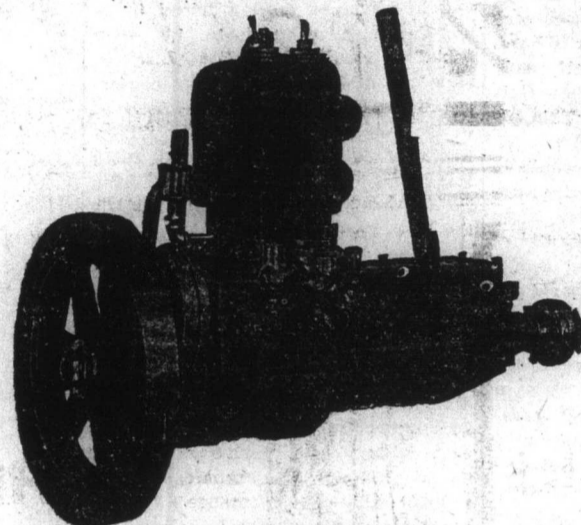
If you need an engine of 2 H. P. or 1000 H. P. Hoisting outfit or Sawmill machinery, Spark Plug or Propeller, we can supply it, and we solicit a share of your business on the basis of FULL VALUE FOR YOUR MONEY.

If you are in doubt as to the most suitable outfit for your work, we are only too pleased to answer enquiries and give you the benefit of our experience with similar cases. Write for catalog and prices on your particular requirements.

Peerless

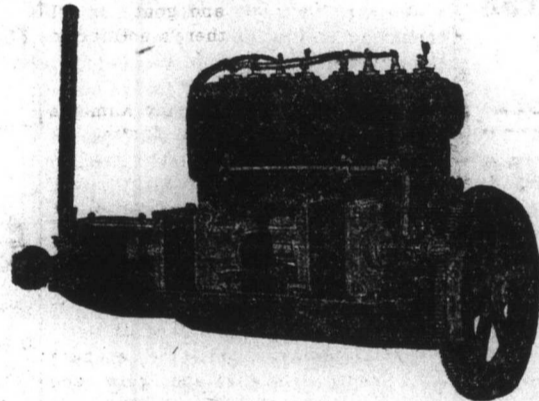
Marine engines are of the medium and heavy duty type and are built in sizes from 5 to 50 H. P.

The 5-6 H. P. and 10-12 H. P. sizes are particularly suitable for trap skiffs, while the 20-24, 25-35 and 40-50 H. P. sizes are suitable for larger boats or as auxiliary power for schooners.



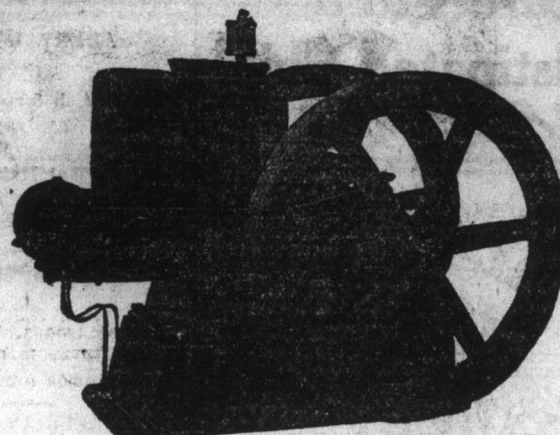
All materials used in their construction are the very best of their respective kinds. All machined parts are finished to the closest possible size limits. This insures a very quiet and smooth running engine and also one that will produce the maximum amount of power from a given bore and stroke.

Peerless engines are of the four-cycle type, giving two complete revolutions for each charge of fuel, consequently they use but slightly over half the amount of oil used by two-cycle motors of the same size.



We can positively state that the Peerless is the simplest, most economical, most compact, and most powerful engine of its size sold in Newfoundland to-day.

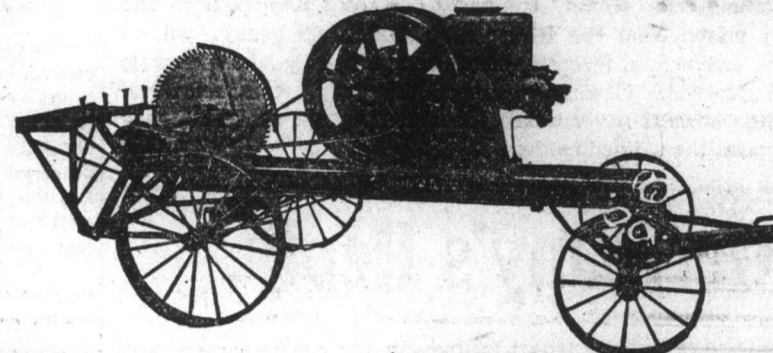
All Peerless engines will operate on kerosene as well as gasoline, and on the larger sizes high tension magnetos, mechanical oilers and reverse gears are standard equipment. In addition we can furnish Electric Starters for the 16-20, 25-35 and 40-50 H. P. sizes, so an auxiliary installation may have Electric lights as well.



In more than ten years' experience in selling stationary engines we have sold a great many carloads of engines of a number of different makes, and among them we have found none to excel the satisfaction given by the Woodpecker.

Whether for sawing, hoisting, pumping, or running dynamos, we can furnish a Woodpecker to do the work. Sizes 2 to 50 H. P.

There is good money to be made sawing coopersage and lumber, and we can furnish a complete outfit for your work, no matter how much or how little you may need. Write for prices and advise the size you require.



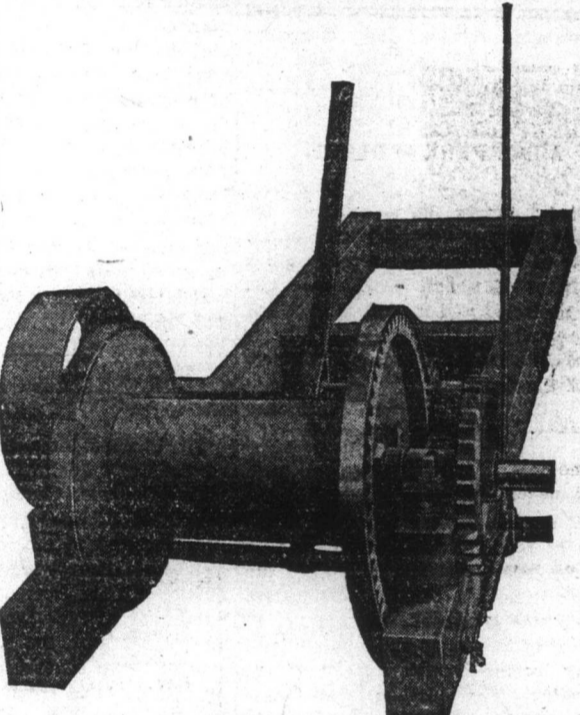
IDEAL HOISTS

FOR FISH, COAL, SAILS and GENERAL CARGO.

There are many places where there is hoisting to do with a direct line using a rope or cable when a simple and efficient hoist will save a great deal of time, labor and expense. The No. 3 Ideal Hoist will handle loads up to 1500 pounds, and is used with the greatest success for operating single platform elevators, derricks, ice, coal or cargo hoisting, sails, pile drivers, etc.

These hoists can be mounted up with a concrete mixer, water pump, etc., and connected to the same engine, so that it is not necessary to buy an extra engine to operate the hoist.

All hoists can be equipped with two winch heads and Safety Ratchet Brake.



HAVOLINE OILS and GREASES.

"IT MAKES A DIFFERENCE."

We are Newfoundland distributors for the Indian Refining Co. of New York, manufacturers of the celebrated Havoline products.

All Havoline Oils are refined and thoroughly filtered in a modern up-to-the minute refinery having all the latest facilities, including a crude oil to start with which is peculiarly adapted to the manufacture of the highest grade of lubricating products known to science.



Oils furnished in one gallon sealed cans with pouring spout, 2-5 gallon square cans to the case, wood barrels and steel barrels.

Greases furnished in 1, 5, 10 and 25 pound pails, wood half barrels and barrels. Write for prices.



WILLIAM H. TRASK,

137 and 140 Water Street.

P. O. BOX, 278.

