

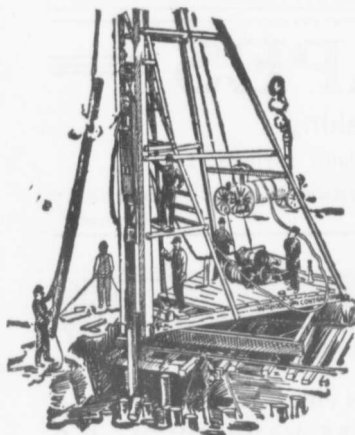
The Canadian Bridge Co., Limited

WALKERVILLE, ONT.

MANUFACTURERS OF

RAILWAY AND HIGHWAY BRIDGES

Locomotive Turn Tables,
Roofs, Steel Buildings and
Structural Iron Work of all descriptions



Pile Driving

on land or water by Steam Pile Drivers or Drop Hammers.

Portable Boilers, Hoisting Engines, Pumping Machinery
To Let—Bridge Building, Trestle Work, Wharves, Dams, Diving Submarine Work and General Contracting.

WM. HOOD & SON
10 Richmond Sq. - MONTREAL

CANADIAN EMPLOYMENT AGENCY

Licensed Labor Contractors
The Temple Building, 185 St. James St.
MONTREAL

All classes of labor, skilled and otherwise, supplied at short notice.
Special attention given to gangs for construction, lumber camps, etc.
All Orders given Special Attention.

The Ontario Accident Insurance Co.

ACCIDENT, EMPLOYERS, ELEVATOR
AND GENERAL LIABILITY

104 St. Francois Xavier St. Montreal

Established 1898

The Hanover Portland Cement Co., Ltd.
Hanover, Ontario

Manufacturers of the Celebrated

"SAUGEEN" Brand of PORTLAND CEMENT

Prices on application. Prompt shipments.

RAILS LOCOMOTIVES AND CARS

John J. Gartshore

83 Front St. West,
(Opposite Queen's Hotel.) TORONTO

ELECTRICITY

If you desire to keep posted on the wonderful progress that is taking place in the use of electricity for an almost endless variety of purposes, you should subscribe to the

Canadian Electrical News and Engineering Journal

A 44 PAGE MONTHLY.

PRICE \$1 PER YEAR

Write for free sample copy to

The G. H. Mortimer Publishing Co.
LIMITED

Toronto Montreal Winnipeg Vancouver



PILE DRIVING

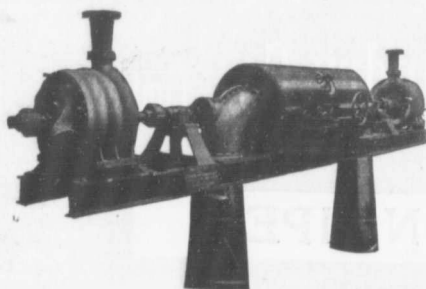
and Foundation Work.

By 5-ton Automatic Steam Pile Hammer, Water Jet or Drop Hammers, Dock Building, Submarine Work and Dredging.

BUILDING MOVER AND WRECKER
General Contracting.

JNO. E. RUSSELL, - Toronto
Residence, 1010 Queen St. E.—Phone M. 456
Office and yard 307 Logan Ave.—Phone M. 1007

PUMPS FOR WATER WORKS



Two Worthington 3-Stage Turbine and McCormack Water Wheels, built for Port Arthur, Ont. Water Works, 1440 gal. per minute against 350 ft. head.

WATER WORKS SYSTEMS INSTALLED

Boilers, (Return Tube and Water Tube,) Tanks, Penstocks, Mill Machinery.

Builders in Canada of

"WORTHINGTON" TURBINE PUMPS

The John McDougall Caledonian Iron Works Co.,

Estimates Cheerfully Furnished

Montreal.

Limited.