

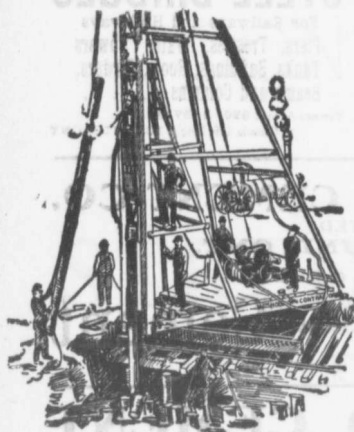
# The Canadian Bridge Co., Limited

WALKERVILLE, ONT.

MANUFACTURERS OF

## RAILWAY AND HIGHWAY BRIDGES

Locomotive Turn Tables,  
Roofs, Steel Buildings and  
Structural Iron Work of all descriptions



### Pile Driving

on land or water by Steam Pile Drivers or Drop Hammers.

Portable Boilers, Hoisting Engines, Pumping Machinery

To Let—Bridge Building, Trestle Work, Wharves, Dams, Diving Submarine Work and General Contracting.

**WM. HOOD & SON**

10 Richmond Sq. - MONTREAL

### CANADIAN EMPLOYMENT AGENCY

Licensed Labor Contractors

The Temple Building, 18 St. James St. MONTREAL

All classes of labor, skilled and otherwise, supplied at short notice. Special attention given to gangs for construction, lumber camps, etc.

All Orders given Special Attention.

### The Ontario Accident Insurance Co.

ACCIDENT, EMPLOYERS, ELEVATOR AND GENERAL LIABILITY . . . .

104 St. Francois Xavier St. Montreal

Established 1898

The Hanover Portland Cement Co., Ltd.  
Hanover, Ontario

Manufacturers of the Celebrated

"SAUCEEN" Brand of PORTLAND CEMENT

Prices on application.

Prompt shipments.

**RAILS** For Contractors, Switches, Girders, &c.  
**LOCOMOTIVES AND CARS** New and Second Hand.

John J. Gartshore

83 Front St. West,

(Opposite Queen's Hotel.) TORONTO

### ELECTRICITY

If you desire to keep posted on the wonderful progress that is taking place in the use of electricity for an almost endless variety of purposes, you should subscribe to the

Canadian Electrical News

and Engineering Journal

A 44 PAGE MONTHLY.

PRICE \$1 PER YEAR

Write for free sample copy to

The G. H. Mortimer Publishing Co.  
LIMITED

Toronto Montreal Winnipeg Vancouver



### PILE DRIVING

and Foundation Work.

By 5-ton Automatic Steam Pile Hammer, Water Jet or Drop Hammers, Dock Building, Submarine Work and Dredging.

**BUILDING MOVER AND WRECKER**

General Contracting.

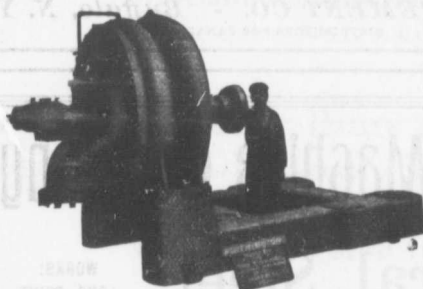
**JNO. E. RUSSELL, - Toronto**

Residence, 1010 Queen St. E.—Phone M. 4626

Office and yard 307 Logan Ave.—Phone M. 2007

# WORTHINGTON PUMPS

FOR WATER WORKS SERVICES



### "WORTHINGTON" TURBINE PUMPS

for heads up to 2,000 feet, are  
Reliable, Durable, Efficient  
and exceedingly simple

WE ALSO MANUFACTURE

**Boilers, Tanks, Filters**  
Etc.

Worthington 2 Stage Turbine Pump for the Winnipeg Water Works, Capacity 5,000,000 per 24 hours.

We Have Two Stage Pumps in Operation Delivering Against 160 Pounds Pressure

**The John McDougall Caledonian Iron Works Co.,**

ESTABLISHED 1852

Montreal.

Limited.