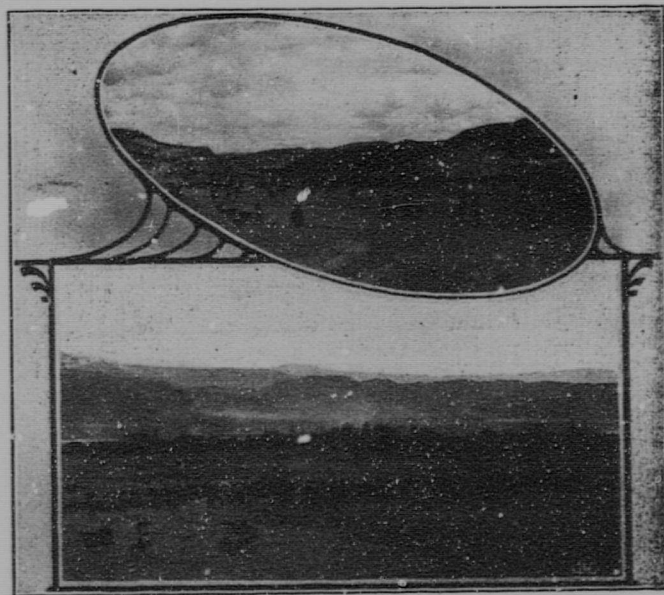


water supply by power, he can secure locations in subdivided tracts which have been placed on the market by land companies, and which have the water supply brought from the hills by gravity systems. These subdivided lands can be secured at prices varying from \$100 to \$200 per acre with water rights included, and the cost of making an orchard in the district will vary according to initial price of land and local labour conditions. Twenty acres of the very best fruit lands in the district will when in full bearing pay a net annual profit of from \$125 to \$150 per acre—These figures are not obtained from guesswork but are compiled from actual returns. An unlimited market exists for the products of the orchard and fruit of first class shipping quality never lacks buyers. The increasing demand for British Columbia fruit will keep well in advance of the orchards and the wide spread desire to obtain choice small holdings in the Pacific Province is only a logical outcome of the rapid settlement of the wheat belt of the Northwest. Speaking of the Kamloops district His Excellency Earl Gray on his last visit to British Columbia said in reply to an address: "When the potentialities of your wonderful soil and climate become fully recognized the influx of settlers of the most desirable kind eager to develop your wonderful district will surpass all your expectations and your district can offer them opportunities of engaging in fruit culture under such ideal conditions as struggling humanity has only succeeded in reaching in one or two of the most favoured spots upon the earth."

### Fruitland

**A**DJACENT to Kamloops, with which it is connected by a handsome four-span bridge of 1,000 feet in length, is the rapidly growing settlement of Fruitland, consisting of some 6,000 acres, and bordering on the North and South Thompson rivers. About four years ago the whole of this land was purchased by the Canadian Real Properties, Ltd., it being surveyed and cut into lots ranging from one acre upwards. With the expenditure of \$70,000 water has been brought on to the property by means of a canal, flumes and laterals, from Jamieson Creek, a distance of 17 miles up the North Thompson. To insure a sufficiency even in the driest summer, several large lake, 6,000 feet up the mountains have been dammed, so that now there is water enough to irrigate three times the acreage. The soil is a rich alluvial deposit of great depth, all cleared and ready for the plow, and with not a rock, stone or boulder to impede its progress. It will produce even the first year paying crops of tomatoes, melons, potatoes, beans, corn, etc., and the purest of water for domestic use can be obtained by driving a pipe 25 or 30 feet, and in many cases less. Only two or three years ago nearly the whole of this land was nothing but a desert of sage brush and sand, but since the life-giving water was turned on, comfortable homes surrounded by healthy young orchards are springing up in all directions. Ideal little homes they are, too,

many of them fronting on either the North or South Thompson, and commanding a view up these immense valleys for miles. A splendid suburb has been added to Kamloops, of which she may well be proud, and which even the most optimistic could never have foreseen. When the scheme of bringing water on to the great sagebrush flat was first mooted, it was looked upon by many as nothing but a gigantic hoax. When the canal was dug, water turned on, and a few lots sold, it was still characterized as a public hold-up and worse than a gold-brick proposition. But today the pessimists and carping critics are silent,



so marvellous is the change which has been wrought in the short space of two years.

### Sunnyside

**H**AVING, for three-quarters of a century, been devoted to the interests of the stock raiser who required thousands of acres where the fruit grower only required acres, the Kamloops District has not heretofore been exploited as a fruit growing one. In consequence throughout one of the most fertile fruit raising and most desirable