

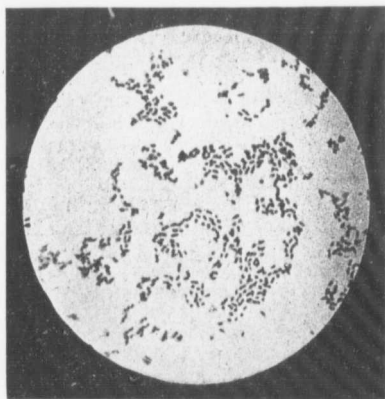
Ontario Department of Agriculture

WOMEN'S INSTITUTE BRANCH

Decay of the Teeth

ITS CAUSE AND PREVENTION.

A popular impression has long existed that caries, or decay of the teeth, is of comparatively recent origin, and that it is due to an artificial mode of life in a departure from the laws of nature, and to artificial environments. It has been held that our early progenitors knew not the



Germs of tooth decay.
(Magnified 1,000 times.)

pains of toothache, and retained their dental organs to a late period in life. Actual observation has proven this to be untrue, as the study of the skulls of mummies has shown that man in all ages has suffered from the ravages of caries to a greater or less degree. It is a disease which is as old as the human race, and has probably caused more pain and distress to the human family than any other disease with which man is afflicted.