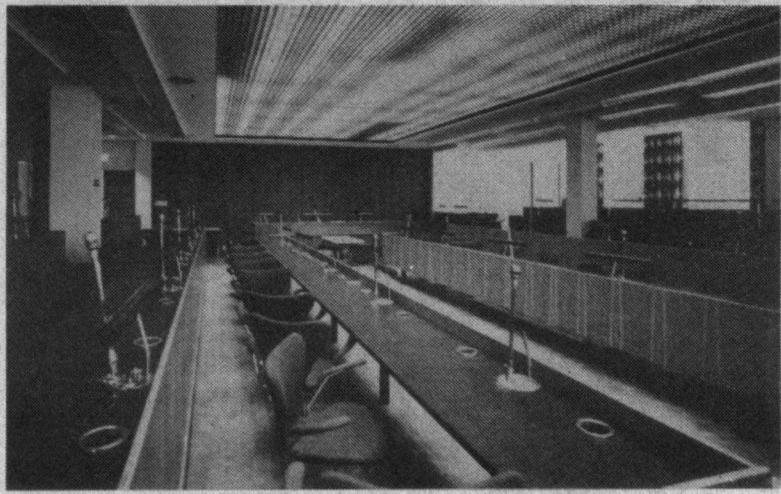


Your student government explained

photo Ray Giguere



Seen here empty, the Council Chamber patiently awaits the arrival of a new Students' Union Executive.

by Richard Watts

With the Students' Union elections in full swing a small explanation of what the positions in the SU Executive are all about is

necessary. With these job descriptions you should be able to choose the candidate you feel will best occupy the position.

Board of Governors Representative

This position, unlike the rest of the executive is not a full-time job. The student representative on the Board of Governors has to only attend the B of G meetings on the last Friday of every month.

However, this does not mean that the position lacks importance. The Board of Governors is the most powerful and important decision-making body on the entire campus. Of its thirteen members only two are students. And of those two representatives only one is elected from the students at large. The other student rep is the SU president who is appointed.

The Board of Governors representative must be able to

speak effectively to the students' interests where the representation is important if not extensive.

Vice President Academic

This position is perhaps the least glorious of all the executive positions and the one which requires the steadiest application of hard work.

The VP Academic is responsible for looking out for the interests of students in the realm of the University's policies such as degree requirements, faculty quotas, and admission requirements.

All this takes place within a maze of committees, boards and red tape and receives little glory but is no less important.

Vice President External

The VP External is responsible for representing the Students' Union to outside organizations like government.

The VP External must help develop policies on matters outside but still relating to the University.

The VP External is the official spokesman to the public for the Students' Union.

In addition to all this the VP External is responsible for organizing the various information campaigns undertaken by the Students' Union. These campaigns might range from pamphlets explaining how to apply for a loan or an awareness campaign such as "Native Studies Week."

Vice President Finance

The VP Finance is the executive member in charge of the Students' Union financial policies.

Unlike the SU Business and Finance managers the VP Finance is responsible for communicating with Students' Council on the SU's financial policies.

The VP Finance is also responsible for implementing and coordinating the financial aspects of

any policy installed through Students' Council.

It makes sense that the VP Finance should have a background in commerce and business.

President

The president is a first among equals within the Students' Union executive.

The President's duties and responsibilities often overlap into the portfolios of the Vice Presidents so this individual should be a kind of jack of all trades and a master of none.

The president is the most high-profile position of all the executive and must be capable of overseeing the whole operation.

Vice President Internal

The VP Internal is basically a managerial position; the person in office must look after the management of SUB, and the other physical resources of the Students' Union, like Dewey's, SUB Theatre, and RATT.

In addition to this the VP Internal is also responsible for looking after the SU-sponsored clubs and organizations, providing them with operating grants and the opportunity to raise money by holding cabarets in Dinwoodie.

So in very brief detail this is what the positions in the Students' Union executive are all about. You can read what the candidates say they are going to do in the jobs on pages 8, 9 and 10.

Hopefully these little job descriptions will make your selection easier. And if we've brought a little clarity to an already confusing situation then that makes us glad all to pieces.



INCOME TAX RECEIPTS for Tuition Fees and Education Deduction Certificates (#T2202A) for Income Tax Purposes

You may pick up:

1. An official fees receipt (if fees are paid in full);
2. An Education Deduction Certificate (form T2202A) (applicable to the 1982 taxation year).

at the
Student Assistance Centre
in the **Northeast** corner of the **Main** floor of the
Central Academic Building
between
8:30 a.m. and 6:00 p.m.
February 14 - 18, 1983 (inclusive)

Please Bring Identification

Office of the Comptroller
Fees Division

Office of the Registrar
Admissions and Records
Co-ordinating Division



U of A Bears Ski Club
presents

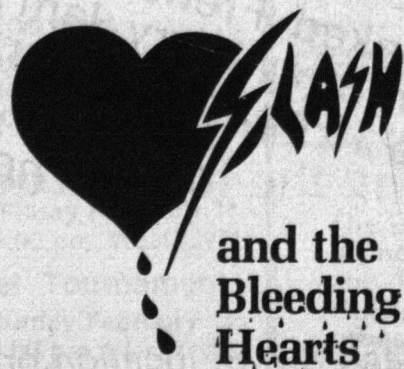
Friday,
February 11;
8 pm.

Special Guests:
The Thieves

David Raven & the Escorts

U of A Recreation Students
present

Saturday,
February 12;



and the
Bleeding
Hearts

CABARETS

DINWOODIE

2nd Floor SUB.

Tickets are available from the SUB Box Office (2nd Floor SUB) and various club members.

NOTE: These events are open only to U of A students, staff, and guests.

Absolutely no minors admitted.

Phi Delta Theta
presents

Foot/oose



Friday, February 18; 8 pm.