

The Man who tries, and fails, succeeds.

The Acadian.

The man who succeeds without trying, fails.

HONEST, INDEPENDENT, FEARLESS.

WOLFVILLE, KINGS COUNTY, N.S. FRIDAY, DECEMBER 14, 1917.

NO. 13

THE ACADIAN.

Published every Friday morning by the Proprietors.

DAVISON BROS., WOLFVILLE, N.S.

Subscription price is \$1.00 a year in advance. If sent to the United States, 1.50.

Newspaper communications from all parts of the county, or articles upon the topics of the day, are cordially solicited.

Advertisements in this paper are charged for until otherwise ordered.

Contract rates for yearly advertisements furnished on application. For insertion, one and a half cents per line for each subsequent insertion.

Copy for new advertisements will be received up to Thursday noon. Copy for changes in contract advertisements must be in the office by Wednesday noon.

Advertisements in which the number of insertions is not specified will be continued and charged for until otherwise ordered.

This paper is mailed regularly to subscribers until a definite order to discontinue is received and all arrears are paid in full.

Job Printing is executed at this office in the latest styles and at moderate prices. All postmasters and news agents are authorized agents of the Acadian for the purpose of receiving subscriptions, but receipts for same are only given from the office of publication.

TOWN OF WOLFVILLE.

J. E. HALE, Mayor.

W. M. BLAIR, Town Clerk.

Office Hours: 10 to 12.30 a.m., 1.30 to 3.00 p.m., Close on Saturday at 12 o'clock.

POST OFFICE, WOLFVILLE.

Office Hours, 8.00 a.m. to 8.00 p.m. On Saturdays open until 5.00 p.m. Mails are made up as follows:

For Halifax and Windsor close at 7.55 a.m.

Express west close at 9.35 a.m.

Express east close at 4.00 p.m.

Kingville close at 4.45 p.m.

Reg. letters 15 minutes earlier.

E. S. CRAWLEY, Post Master.

CHURCHES.

BAPTIST CHURCH—Rev. N. A. Hartness, Pastor: Sunday Services: Public Worship at 11.00 a.m. and 7.00 p.m. Sunday School at 9.30 a.m. Mid-week prayer-meeting on Wednesday evening at 7.30. Women's Missionary Aid Society meets on Wednesday following the same Sunday as the church at 2.30 p.m. The Social and Benevolent Society meets the third Thursday of each month at 3.30 p.m. The Mission Band, meets on the second and fourth Thursdays of each month at 3.45 p.m. All seats free. A cordial welcome is extended to all.

PREBYTERIAN CHURCH—Rev. G. W. Miller, Pastor: Public Worship every Sunday at 11 a.m. and 7 p.m. Sunday School at 9.45 a.m. Prayer Meeting on Wednesday at 7.30 p.m. Services at Port Williams and Lower Horton as announced. W. F. M. S. meets on the second Tuesday of each month at 8.00 p.m. Senior Mission Band meets fortnightly on Monday at 7.00 p.m. Junior Mission Band meets fortnightly on Sunday at 5.00 p.m.

METHODIST CHURCH—Rev. F. J. Armitage, Pastor: Services on the Sabbath at 11 a.m. and 7 p.m. Sabbath School at 10 o'clock, a.m. Prayer Meeting on Wednesday evening at 7.45. All the seats are free and strangers welcomed at all the services. At Greenwood, preaching at 3 p.m. on the Sabbath.

CHURCH OF ENGLAND.

St. John's Parish Church, of Honor.—Services: Holy Communion every Sunday, 8 a.m. First and third Sundays at 11 a.m. Matins every Sunday 11 a.m. Evensong 7.00 p.m. Special services in Advent, Lent, etc., by notice in church. Sunday School, 10 a.m.; Superintendent, R. Creighton.

All seats free. Strangers heartily welcomed.

Rev. R. F. Dixon, Rector.

A. G. Cowie, H. Troys-Ballock, Wardens.

St. Francis (Catholic)—Rev. Fr. Doan, P. P.—Mass 9 a.m. the second Sunday of each month.

THE TABERNACLE.—During Summer months open air gospel services:—Sunday at 7 p.m., Tuesday at 7.30 p.m., Sunday School at 2.30 p.m. Splendid glass rooms, efficient teachers, men's bible class.

MASONIC.

St. George's Lodge, A. F. & A. M., meets at their Hall on the third Monday of each month at 7.30 o'clock.

H. A. PACK, Secretary.

ODDFELLOWS.

OSWEGO LODGE, No. 92, meets every Monday evening at 8 o'clock, in their hall on Harris Block. Visiting brethren always welcomed.

H. M. WATSON, Secretary.

TEMPERANCE.

WOLFVILLE DIVISION S. of T. meets every Monday evening in their Hall at 8 o'clock.

FORESTERS.

Osprey Division, I. O. F., meets in Temperance Hall on the third Wednesday of each month at 7.30 p.m.

E. B. SHAW

Repairing of Boots and Shoes of all Kinds

Has resumed business at the old stand in his new building.

Orders Solicited and Carefully Executed.

"Stop and Rest" Inn

AN EXCLUSIVE RESORT for Motorists, House and Week-End Parties.

Evening Functions and After-Dinner Suppers arranged. Afternoon Teas.

W. G. STACKHOUSE, WOLFVILLE, N.S.

PHONE 101

A POWERFUL AID

When you feel sluggish and nervous, tired and indifferent, you have the first symptoms of declining strength and your system positively needs the special nutritive food- tonic in

SCOTT'S EMULSION

power, enliven its circulation and bring back the snap and elasticity of good health.

Scott's Emulsion supplies Nature with the correct building-food which is better than any drugs, pills or alcoholic mixtures.

Scott & Bowne, Toronto, Ont. U-16

of their kin. This is the story of a British officer, an aviator, who died by his own hand that his comrades might live.

He was on a long distance reconnaissance over the African desert when a mishap to his engine forced him to descend. A mechanic was with him as observer, and for hours the two men labored to make good the defect in their machine. But the damage proved irreparable. They had at length to give up the task and set themselves down to wait for succor.

On these fronts, when an airplane fails to return, a second machine is sent out to search for its overdue sister. As a rule, the rescue of the missing aviator is easily effected, though sometimes there are tragedies. In this case the approach of hostile British air-flying armies was a tribulation which compelled the aviator to abandon his machine, and, after history will take it as a very precious trophy, he slipped away in leaf and feather to the glorious wreath of such flying places as the desert in that part of Africa.

No British aviator will willingly fall into the hands of these desert allies of the Germans. The aviator which

"That a Man Should Lay Down His Life"

By Second Lieutenant F. J. Sleath.

A few years ago the world was thrilled by the story of the heroic death of Captain Oates, a member of the ill fated Scott expedition to the Antarctic, who walked out into the midst of a winter blizzard and died, that his comrades might have his share of the dwindling supplies. The records of the war have shown that this glorious incident was no mere accidental episode in the tale of the achievements of our race; that where ever the sacrifice is demanded

of their kin. This is the story of a British officer, an aviator, who died by his own hand that his comrades might live.

He was on a long distance reconnaissance over the African desert when a mishap to his engine forced him to descend. A mechanic was with him as observer, and for hours the two men labored to make good the defect in their machine. But the damage proved irreparable. They had at length to give up the task and set themselves down to wait for succor.

On these fronts, when an airplane fails to return, a second machine is sent out to search for its overdue sister. As a rule, the rescue of the missing aviator is easily effected, though sometimes there are tragedies. In this case the approach of hostile British air-flying armies was a tribulation which compelled the aviator to abandon his machine, and, after history will take it as a very precious trophy, he slipped away in leaf and feather to the glorious wreath of such flying places as the desert in that part of Africa.

No British aviator will willingly fall into the hands of these desert allies of the Germans. The aviator which

Back-Yard Poultry That Pay.

(Experimental Farm Note.)

A dozen hens in the back-yard should supply the average family with new laid eggs more cheaply than eggs can be bought during the winter and as a business proposition such hens pay. Further to demonstrate this, a small experiment was conducted by the Poultry Division of the Experiment 1 Farm, Ottawa.

The details are supplied by Mr. George Robertson who kept the flock in his own back-yard.

At this time when increased production is of such vital importance, the urban and suburban keeping of poultry requires particular attention. To demonstrate what might reasonably be expected under ordinary city conditions, a mixed flock of fowl were placed in surroundings where a majority of city fowl would be subjected to.

The birds were not selected with a view to the greatest production possible, but rather to the securing of such a flock as any amateur might go out and purchase. The flock consisted of twenty-six birds—four of which were three-year old Black Leghorns, six White Leghorns, six

hatched in May and the balance were cross-breds. Black and White Leghorns, hatched in June. They were not put into winter quarters until well on in November and it was December 7th before the first egg was laid.

HOW THE FLOCK WAS KEPT.

An old wood shed about eleven by twelve feet was utilized as a poultry house. In the south side, fifteen inches from the floor a line of windows two feet wide was placed and above these an opening about eighteen inches wide was made across the entire front. In this frame covered with light cotton was hung. This frame was kept locked up to the ceiling through the day except in the severest weather.

Hoppers of oatmeal, beef scrap and dry mash were kept constantly before the flock. The dry mash consisted of bran, middlings and cornmeal equal parts, one-half part given as a half-part blood flour. A floor of straw water was kept on the floor upon which all whole grain feed was scattered.

In the morning, before going to work, cracked corn, wheat and one equal parts, was given. At the same time warm water was given. At noon the water was renewed and all the kitchen waste such as vegetable parings was fed. Usually at this time a few handfuls of mixed grain were also scattered.

In the winter, as it is always dark before the night fall, which consisted of m x d grain, was given, an electric light was turned on for a couple of hours and the fowl allowed to scratch their hearts content. Water was also supplied at the night feeding. Before turning off the light the water pan was emptied so as to prevent its freezing and through the night

What is Crushed Coffee?

Briefly, Crushed Coffee is coffee that has had the beans crushed between steel rollers with just enough pressure exerted to break the beans into clean, even grains from which the bitter chaff and dust are easily separated by air suction.

Crushing in a coffee mill no egg is needed to settle it. Red Rose Coffee is as easy to make as Red Rose Tea, and its flavor, aroma and smoothness are a delight as compared with the ordinary ground coffee.

Sold only in double-sealed air-tight cans to keep it good.

The same price as it was three years ago.

Red Rose Coffee

ESTABROOK'S RED ROSE CRUSHED COFFEE

As the flock from the time it was put in the fall until it was disposed of in the summer, never got outside the house, and as no rooster was kept, there was no cause of annoyance to the neighbors.

The methods followed were such as almost any city dweller could follow. A very small space for a house and no yard room are required. By buying pullets in the fall and selling them when poultry is high in the early summer, the most will be had out of the flock without interfering in any way with either your own or your neighbor's back yard garden.

This mixed flock of hens and pullets laid, in the six months December to May, 149 eggs of which were 125 at \$2.00 a dozen (70¢ a dozen) in December, January and February, 80¢ a dozen (60¢) in March, 60¢ a dozen (50¢) in April, 40¢ a dozen (30¢) in May, giving a total revenue of \$267.50.

The cost of feed and labor for the six months was \$26.75.

The total cost of feed and labor for the six months was \$26.75.

The total cost of feed and labor for the six months was \$26.75.

The total cost of feed and labor for the six months was \$26.75.

The total cost of feed and labor for the six months was \$26.75.

The total cost of feed and labor for the six months was \$26.75.

The total cost of feed and labor for the six months was \$26.75.

The total cost of feed and labor for the six months was \$26.75.

The total cost of feed and labor for the six months was \$26.75.

The total cost of feed and labor for the six months was \$26.75.

The total cost of feed and labor for the six months was \$26.75.

The total cost of feed and labor for the six months was \$26.75.

The total cost of feed and labor for the six months was \$26.75.

The total cost of feed and labor for the six months was \$26.75.

The total cost of feed and labor for the six months was \$26.75.

The total cost of feed and labor for the six months was \$26.75.

The total cost of feed and labor for the six months was \$26.75.

The total cost of feed and labor for the six months was \$26.75.

The total cost of feed and labor for the six months was \$26.75.

The total cost of feed and labor for the six months was \$26.75.

The total cost of feed and labor for the six months was \$26.75.

The total cost of feed and labor for the six months was \$26.75.

The total cost of feed and labor for the six months was \$26.75.

The total cost of feed and labor for the six months was \$26.75.

The total cost of feed and labor for the six months was \$26.75.

The total cost of feed and labor for the six months was \$26.75.

The total cost of feed and labor for the six months was \$26.75.

The total cost of feed and labor for the six months was \$26.75.

The total cost of feed and labor for the six months was \$26.75.

The total cost of feed and labor for the six months was \$26.75.

The total cost of feed and labor for the six months was \$26.75.

The total cost of feed and labor for the six months was \$26.75.

The total cost of feed and labor for the six months was \$26.75.

The total cost of feed and labor for the six months was \$26.75.

The total cost of feed and labor for the six months was \$26.75.

The total cost of feed and labor for the six months was \$26.75.

The total cost of feed and labor for the six months was \$26.75.

The total cost of feed and labor for the six months was \$26.75.

The total cost of feed and labor for the six months was \$26.75.

The total cost of feed and labor for the six months was \$26.75.

The total cost of feed and labor for the six months was \$26.75.

The total cost of feed and labor for the six months was \$26.75.

The total cost of feed and labor for the six months was \$26.75.

The total cost of feed and labor for the six months was \$26.75.

The total cost of feed and labor for the six months was \$26.75.

The total cost of feed and labor for the six months was \$26.75.

The total cost of feed and labor for the six months was \$26.75.

The total cost of feed and labor for the six months was \$26.75.

The total cost of feed and labor for the six months was \$26.75.

The total cost of feed and labor for the six months was \$26.75.

The total cost of feed and labor for the six months was \$26.75.

The total cost of feed and labor for the six months was \$26.75.

The total cost of feed and labor for the six months was \$26.75.

The total cost of feed and labor for the six months was \$26.75.

The total cost of feed and labor for the six months was \$26.75.

The total cost of feed and labor for the six months was \$26.75.

The total cost of feed and labor for the six months was \$26.75.

The total cost of feed and labor for the six months was \$26.75.

The total cost of feed and labor for the six months was \$26.75.

The total cost of feed and labor for the six months was \$26.75.

The total cost of feed and labor for the six months was \$26.75.

The total cost of feed and labor for the six months was \$26.75.

The total cost of feed and labor for the six months was \$26.75.

The total cost of feed and labor for the six months was \$26.75.

The total cost of feed and labor for the six months was \$26.75.

The total cost of feed and labor for the six months was \$26.75.

The total cost of feed and labor for the six months was \$26.75.

The total cost of feed and labor for the six months was \$26.75.

The total cost of feed and labor for the six months was \$26.75.

The total cost of feed and labor for the six months was \$26.75.

The total cost of feed and labor for the six months was \$26.75.

The total cost of feed and labor for the six months was \$26.75.

The total cost of feed and labor for the six months was \$26.75.

The total cost of feed and labor for the six months was \$26.75.

The total cost of feed and labor for the six months was \$26.75.

Children Cry for Fletcher's

CASTORIA

The Kind You Have Always Bought, and which has been in use for over 30 years, has borne the signature of

Dr. J. C. Fletcher, and has been made under his personal supervision since its infancy.

Allow no one to deceive you in this. All Counterfeits, Imitations and "Just-as-good" are but experiments that trifle with and endanger the health of Infants and Children—Experience against Experiment.

What is CASTORIA

Castoria is a harmless substitute for Castor Oil, Paregoric, Drops and Soothing Syrups. It is Pleasant. It contains neither Opium, Morphine nor other Narcotic substance. Its age is its guarantee. It destroys Worms and allays Feverishness. It cures Diarrhoea and Wind Colic. It relieves Teething Troubles, cures Constipation and Flatulency. It assimilates the Food, regulates the Stomach and Bowels, giving healthy and natural sleep. The Children's Panacea—The Mother's Friend.

GENUINE CASTORIA ALWAYS

Bears the Signature of

Dr. J. C. Fletcher.

The Kind You Have Always Bought

In Use For Over 30 Years

THE CASTORIA COMPANY, 27 MURRAY STREET, NEW YORK CITY.

COAL! COAL! COAL!

Carefully Screened and Promptly Delivered.

Springhill, Albion Nut and Old Sydney.

GIVE US A TRIAL

Burgess & Co.

Yarmouth Line

Fall SERVICE.

Leave Yarmouth Wednesdays, and Saturdays. Return, leave Central Wharf, Boston, Tuesdays, and Fridays.

For Tickets, Staterooms and additional information, apply at Wharf Office.

J. Ernest Kinsey, Supt. Yarmouth, N.S.

BOSTON & YARMOUTH STEAMSHIP CO., LTD.

Even if War is on You Must Have Clothes

And we are well prepared to serve you in this line.

Our work in

MEN'S CLOTHING OF ALL KINDS

is winning us a reputation. We use the best materials, employ the best workmanship and our styles are always right.

We guarantee every garment and shall be pleased to show goods and quote prices.

A. E. Regan, Wolfville

E. C. BISHOP

Licensed Auctioneer for Town of Wolfville and Kings County.

Wolfville, N.S. 14—3m p.

British Tommy—Speak English

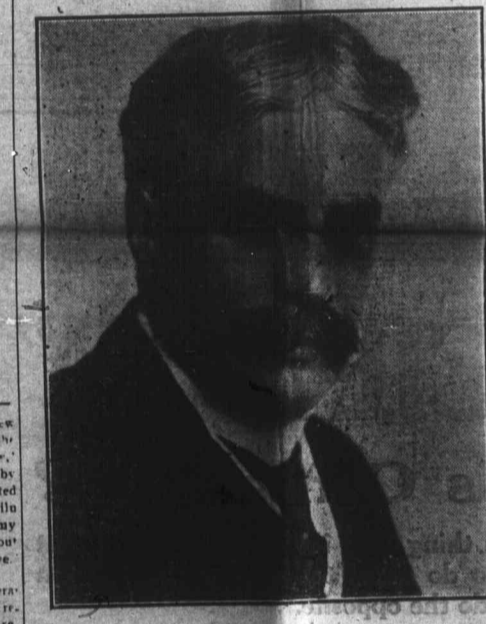
Monsoo? French Storekeeper—But—yes—a little, M'ieur.

British Tommy—Right! Then give us ten pounds o' spuds, an axe o' beech, a packet o' fags, and a box o' lights, an' be slippy!

Pleasure is largely dependent upon the individual.

Many would do almost anything that thick.

A. M. WHEATON



Sir Robert Laird Borden

Black as Dirt About the Eyes

Liver Was All Upset and There Was Pain Under the Shoulder-blade—Two Interesting Letters.

So many people suffer from derangements of the liver that we feel sure these two reports, just recently received, will prove interesting reading and valuable information to many readers of this paper.

Mrs. F. L. Harris, Keatley P.O., New Brunswick, writes: "I was suffering from liver trouble. I had a heavy pain under one shoulder blade all the time, and was nearly as black as dirt around the eyes, so I concluded to try some of Dr. Chase's Kidney-Liver Pills. I did so, and before I had taken one I felt the pain had left me and I commenced to gain in flesh, and by the time I had taken two boxes I was completely cured and felt like a new person. My trouble was caused by heavy work out-of-doors, and, of course, heavy eating and constipation. I would advise anyone suffering from kidney or liver trouble to give Dr. Chase's Pills a trial."

Mrs. Charles Terry, Toward, Ont., writes: "Before I was married I was troubled with enlargement of the liver. My liver became so enlarged that you could detect the