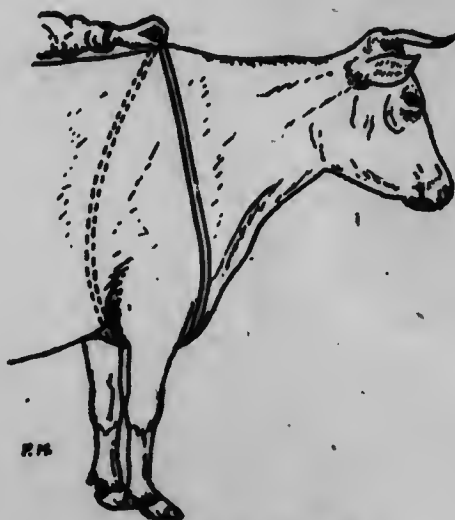


e) A very simple mensuration. A string or tape stretched from the poll to the tail-head of the cow must be the same length or longer than another string passing over the withers and between the fore-legs (girth in bias). I have tried this on many cows of different breeds, the production of which I knew. According that the cow was a larger producer the length was greater than the girth in bias.



Girth taken slashwise

Width must be especially present at the hook-bones (hips) ; it should be also present at the pin-bones.

## II

### FINENESS OR QUALITY

Fineness of bone can be judged by the bone, skin and hair.

a) Fineness of bone is shown by that of the limbs, tail and horns. Fineness of limbs being perhaps the most important and can be most easily judged by mensuration.

The circumference of pastern must be contained 10 times in the