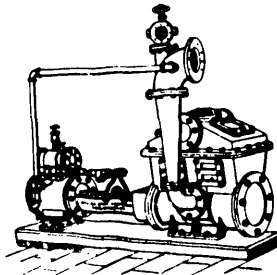


# EVERYTHING IN THE PUMP LINE

BUILT BY  
**THE NORTHY MFG. CO.**  
 LIMITED  
 TORONTO, Ont.



OUR INDEPENDENT CONDENSER

BEST IN MATERIAL AND WORKMANSHIP  
 LOW IN PRICE

Send for Catalogue

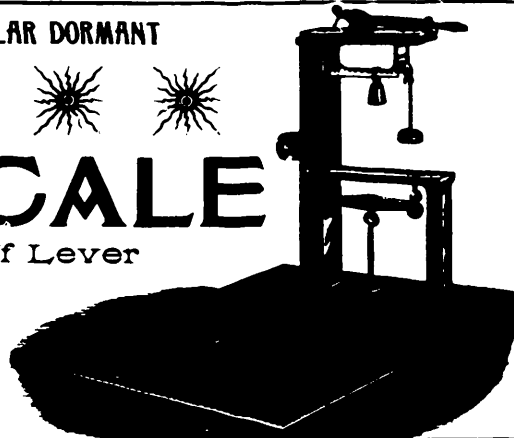
## IMPROVED SINGLE PILLAR DORMANT

Warehouse or Hopper

# SCALE

With Cut-off Lever

With . or . without Drop . Lever



♦ ♦ **THIS SCALE** is much cheaper than the Double Pillar Dormant, but is equal to it both in strength and accuracy. All the strain and leverage is entered directly on the pillar instead of being on the cap piece as in the two pillar scale, thus effecting a saving of two iron pillars and brass cap piece required in the double pillar pattern. It has an advantage over double pillar in that a Drop Lever may be used to let down the platform when not in use.

It is more accurate than the ordinary Single Pillar Dormant Scale, as the cut-off lever removes half the pressure which in the ordinary scale causes straining and deflection of the beam, and thus the beam of this scale works more freely and indicates more correctly. Each weight at beam point weighs twice the weight on platform that it does in the ordinary scale.

The removal of so much strain and pressure prevents the parts from breaking or wearing so quickly, and the improved scale will be found to be much more durable than the ordinary scale.

PRICES GIVEN ON APPLICATION

**BURROW, STEWART & MILNE**

Manufacturers of SCALES of all kinds

HAMILTON, ONT.

Improvement secured by Letters Patent, issued 28th January, 1891

JUTE . . . . .  
 AND . . . . .  
 COTTON . . . . .

# BAGS AND SACKS

Of every : : :  
 Quality and :  
 Size required :

## Brown and Cream Calendered Jute Bags

25 and 50 lb.: Flour, Rice and other Groceries. 50 and 200 lb.: Salt. 100 lb.: Flour, Meal, Grain, Potatoes. 140 lbs.: Flour, Meal, etc. 100 lbs.: Middlings, 200 and 280 lb.: Flour. 75 and 100 lb.: Bran. Wool Sack, etc.

Bleached or Gray Cotton Bags 10, 24 1/2, 49, 98 and 140 lb.: Flour, Meal, etc. 2, 3, 5, 7, 8 and 10 lb.: Table Salt.

Original Designs for Brands Prepared Free . . . Printing in Beautiful Bright Colors at Lowest Prices

SEND FOR SAMPLES AND PRICE LIST

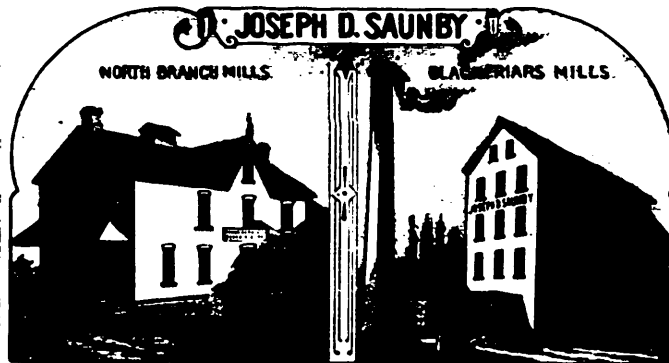
**DICK, RIDOUT & CO., TORONTO, ONT.**

WINNIPEG AGENT: - - - J. L. BUCKNALL

C. C. CLEVELAND G. F. CLEVELAND

**J. L. Goodhue & Co.**  
 MANUFACTURERS OF  
**LEATHER BELTING . . . .**  
 AND  
**LACE LEATHER**  
 DANVILLE, Que.

ALWAYS BUYING . . . . SEND SAMPLES AND QUOTATIONS  
**LEON M. GARRIER**  
 COMMISSION MERCHANT  
 908, ST. PAUL ST. AND BELL'S LINE . QUEBEC  
 FLOUR, GRAIN, FEED AND PRODUCE



Manufacturer of . . . .  
**High Grade Flours**

Brands :  
**"ANSONIA"**  
 AND  
**"GECUMSEA"**

Chopped Feed . . .  
 In whole or car lots mixed

~LONDON, ONT.~