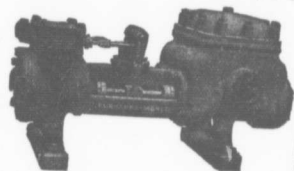


**...Fairbanks, Morse PUMPS...
Hand-Steam Power.
GASOLINE ENGINE
& Pump combinations
to meet all your**



--Requirements about MINE, MILL, and FURNACE.--

EMERSON STEAM PUMPS, (Pulsometer Type)
--will handle Muddy, Sandy and Gritty water without injury to themselves.--

THE

Canadian Fairbanks Co., Ltd.

MONTREAL. TORONTO. ST. JOHN. WINNIPEG. CALGARY. VANCOUVER.

CHAINS. CHAINS.

(All Sizes in Stock.)

"EDGES" BEST SPECIAL CRANE CHAINS.

Cannot be Excelled for **HIGH CLASS QUALITY** and **WORKMANSHIP**
They are made of the very best brands of English Bar Iron and by Selected Workmen.

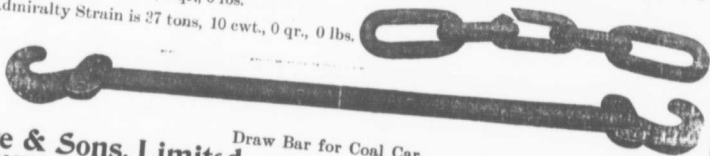
Makers of every description of Chains
for Mining and all Engineering Purposes,

Coupling Chains and Solid Forged Draw Bars

For Mine Cars, A SPECIALTY.

This 1 1/2" Draw Bar Coupling Chain broke at
48 tons, 12 cwt., 0 qr., 0 lbs.

The Admiralty Strain is 27 tons, 10 cwt., 0 qr., 0 lbs.



Edge & Sons, Limited,
SHIFNAL, England:

Draw Bar for Coal Car.

Tel. address "Edge" Shifnal.
"Codes" A. B. C. and Bedford McNeills"