

The Canadian Entomologist.

VOL. XL. LONDON, SEPTEMBER, 1908.

No. 9.

THREE NEW NORTH AMERICAN PHYLLOTHRIPIDÆ.

BY J. DOUGLAS HOOD, OFFICE OF THE STATE ENTOMOLOGIST, URBANA, ILL.

In a collection of *Thysanoptera*, kindly sent me for determination by Prof. H. A. Surface, Economic Zoologist of Pennsylvania, I find three new species, described below. Type specimens are in the writer's collection, and in the collection of the Pennsylvania State Department of Agriculture.

PHYLLOTHRIPS, gen. nov.

(φυλλον, leaf; θριψ, thrips.)

Head about $1\frac{1}{2}$ times as long as wide, subcylindrical, broadest across eyes, narrowed posteriorly. Eyes large, finely faceted, bulging. Vertex elevated, prolonged, overhanging insertion of antennæ, and bearing the anterior ocellus at its extremity. Mouth cone subacute, reaching about four-fifths across prosternum. Prothorax about half as long as head. Legs slender; fore femora not enlarged; fore tarsi unarmed in both sexes. Abdomen slender. Male with a scale at base of tube.

Type.—*Phyllothrips citricornis*, sp. nov.

This genus is erected for the reception of *P. citricornis*, sp. nov., and *Cryptothrips aspersus*, Hinds. It is close to *Liothrips*, Uzel, differing from it in the produced vertex, overhanging ocellus, bulging eyes, and longer head.

Phyllothrips citricornis, sp. nov. (Fig. 15.)*

Female.—Similar in general appearance to *P. aspersus* (Hinds), from which it may be distinguished as follows:

- a. Antennæ rather stout; segments 5, 6 and 7 slightly more than one-half as wide as long; segments 1 and 2 nearly concolorous with body; segment 3 pale yellow; rest of antenna shading to dark brown at tip, excepting bases of segments 4 and 5, which are yellowish. Prothoracic spines small, inconspicuous; mid-laterals wanting .. *P. aspersus* (Hinds).

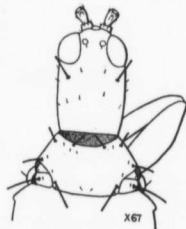


FIG. 15.—*Phyllothrips citricornis*

*In the figures all membranous portions are stippled.