

principal points on the new portion of the line north of Cowan. Other stations will be located later on.

ONTARIO AND RAINY RIVER.

About 40 miles of this road are under construction and the work will be continued during the present winter with a large force of men. This section is well advanced toward completion and grading is going on on a further section of 40 or 50 miles. The country being wooded and rocky, permits of work going on in the winter to good advantage, when men are more easily obtained than during the busy summer season. The section under construction extends westward from Stanley station on the Port Arthur, Duluth & Western railway. The latter road has been absorbed by the Ontario & Rainy River Co. The Rainy River road will do a great deal toward developing the mining districts of Northwestern Ontario, intersecting as it will the leading mining sections. The road will eventually connect with the Manitoba South-eastern at Rainy river, forming a new through line to Lake Superior.

The South-Western Branch.

The Southwestern or Glenboro branch of the C. P. R. extends from Winnipeg to Souris, a distance of 150 miles. This line taps the well known wheat districts of Carman, Glenboro and Souris. The land in these districts is about all taken up and is for the most part under cultivation. During the last few years a great change is to be seen in the appearance of the country; everywhere the farmers have been building large dwellings and stables, setting out trees, and in other ways improving their places and making them more homelike. The crops in the districts extending from Rathwell to Stockton have been very good this last season, the average yield being about 25 bushels to the acre, most of the wheat grading No. 1 hard. The yield in the Carman and Souris districts was not quite so large as this, the average being about 18 bushels.

A government contract has been let for the draining of the Boyne Marsh

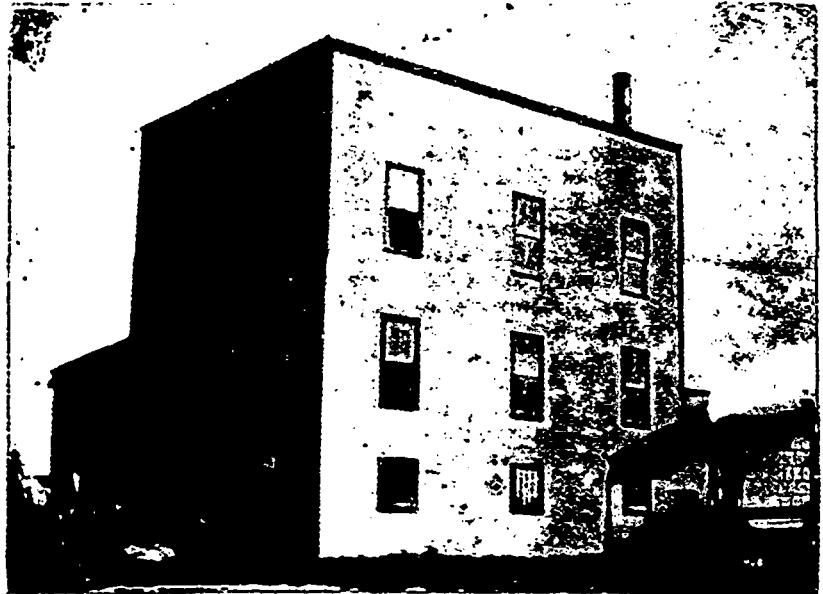


A. Creighton's Store, Cypress River.

lying between Carman and Rathwell and the contractor has been busy all summer on this work. It is expected that when this is completed what is now an uninhabitable marsh will be converted into a good farming district.

The first places we reach after leaving Winnipeg are Headingly, Fanny, Stelle and Elm Creek, which are small places, each having one or two general stores. From Elm Creek a spur line runs to Carman, a distance of 12 miles.

Carman is a very pretty town, situated on the banks of the Boyne River. It is a very good business point as it is in the centre of a well-to-do farming community. The wheat crop in this locality did not turn out as well as was expected this last season, the yield only averaging about 18 bushels to the acre, but even with this light crop the amount of grain raised was very large. Some 425,000 bushels have already been marketed and it is estimated that 50 per cent is still in the hands of the farmers.



Flour Mill at Holland, Man.

Nearly all the grain marketed graded No. 1 hard. Carman has grown rapidly during the last year, several very good business blocks and 75 or 80 dwellings having been built and a number of new businesses started. We will only mention some of the more important changes. T. T. Pearson has started a general store. Toombs & Co. have erected a very fine solid brick block. They are occupying part of this building themselves and have their large stock of general merchandise very attractively displayed. The other store is leased to H. A. Cox & Co., who started business here recently with a full line of clothing and men's furnishings. E. F. Fisher has put in a stock of hardware erecting a building for the purpose. Chas. Naylor also has built a new two story frame building near the bridge which he is occupying with a stock of confectionery, etc. Richardson & Muler have opened a general store in a new stand near the station. H. N. Hill & Co. have started a grocery, flour and feed store in the south end of the town. F. D. Stewart has purchased the stock of the Victoria Hall clothing store. The J. J. Graham & Co. estate has been taken over by Toombs & Co.

Returning to Elm Creek, the next station we reach is Rathwell, where there are two general stores. Rathwell is in a good wheat section and should become a good business town. Treherne was visited last fall by a

bad fire, which cleaned out a whole block, comprising ten or twelve buildings, half of them being business places. Although a number of the merchants suffered heavily they set to work at once to erect new stands and put in new stocks and were soon in a position to resume business. Culvert & Wilson's general store is the only new business this year, but the town is well supplied with good stores, there being four general stores, two butcher shops, hardware, grocery, drug store, lumber yard, three implement warehouses, etc.

There are not many changes noticeable at Holland during the past year. W. F. Schooley bought out McLennan & Williams and E. Nowby is starting a machine shop and has a building for the purpose now under

construction. Part of this building when completed will be occupied by the local paper, The Observer. F. H. Dagg reports a great deal of building throughout the country, some very fine houses having been erected among them being that of Mr. Ferris, which cost \$3,000. The principal stores here are those of John Fumerton & Son, and W. R. Ross, general merchants, and Downey & Collison and E. Newby, hardware, there being also the usual number of smaller places. As will be seen from the accompanying cut, there is a very good roller mill at this point.

Cypress River is one of the cleanest and most substantial looking towns on this line of railway, possessing as it does a number of brick and stone buildings the style of which can be judged from the cuts we show of A. Creighton's and A. Sharpe & Co.'s stores. As an evidence of the growth of this town we might say that the C. P. R. Co. has recently surveyed and put in the market eight blocks of new lots which were rendered necessary on account of the old lots having all been sold. There are a number of good stores here, and a very enterprising newspaper, A. Young's now block is the only business building erected this year.

It is hardly necessary to say anything about Glenboro, as it is a well known business point, being the centre of a wealthy farming community. J. W. Cochran has a large flour