

**Ford, Ruthven & Co.,**  
26 PITT STREET, SYDNEY,  
AUSTRALIA.

**WOOL BUYERS on Commission**

Letters of Credit must accompany orders.

Bankers:—Bank of Australasia, Sydney.

**GEO. PATTINSON & CO.**

PRESTON, - ONTARIO.  
Manufacturers of

FINE AND MEDIUM **TWEEDS**

**Guelph Woolen Mill Co.,**  
QUELPH, ONT. LIMITED,

Manufacturers of

Underwear, Hosiery, Wheeling,  
Fingering and Worsted Yarns,  
Eiderdown Flannel, Etc.

Selling Agents—Donald Fraser, Montreal.  
E. H. Walsh & Co., Toronto.

**PENMAN MANUFACTURING CO.**

PARIS, ONT. LIMITED,

Manufacturers of

Hosiery, Shirts, Drawers,  
Glove Linings and Yarns.

Selling Agents—D. Morrice, Sons & Co.,  
Montreal and Toronto.

**ROSAMOND  
WOOLEN CO.**  
ALMONTE, ONT,

Fine Tweeds, Cassimeres,  
and Fancy Worsted  
Suitings and Trouserings.

**JOHN HALLAM  
TORONTO.**

WHOLESALE DEALER IN  
DOMESTIC and FOREIGN **WOOLS**  
Sumac, Japonica, etc.

Reproductions Made for Eight  
Cents per Square Inch.



Half Tones Made Direct from  
Photos.

# It Leads Them All.

THE OLDEST,  
THE LARGEST,  
THE SAFEST,  
THE CHEAPEST,

CANADIAN LIFE INSURANCE COMPANY IS

## THE CANADA LIFE ASSURANCE COMPANY.

CAPITAL AND FUNDS OVER \$13,000,000.

Write for  
Prospectus.

A. G. RAMSAY,  
PRESIDENT.

GEO. A. & E. W. COX,  
Managers for Toronto  
and Eastern Ontario.

## PHENIX ASSURANCE COMPANY,

OF LONDON, ENGLAND.

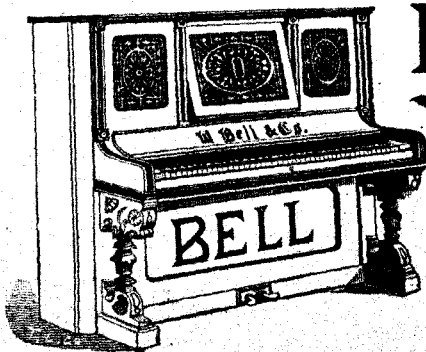
ESTABLISHED 1782.

AGENCY ESTABLISHED IN CANADA, 1804.

**PATERSON & SON,** GENERAL AGENTS FOR THE  
DOMINION,

35 St. Francois Xavier Street, MONTREAL.

**LEWIS MOFFATT & CO.,** Agent at Toronto.



**BELL** HIGH-CLASS  
INSTRUMENTS

USED AND RECOMMENDED  
BY

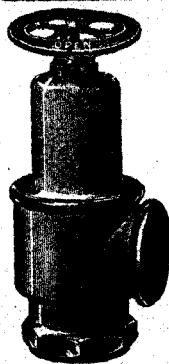
LEADING MUSICIANS.

Send for Catalogue.

**THE BELL ORGAN AND PIANO CO**

(LIMITED)

QUELPH, - ONTARIO.



## CROSBY STEAM GAGE AND VALVE CO.

Sole Proprietors and Manufacturers of  
Crosby Pop Safety Valves, for all kinds of Boilers, Water Relief Valves including  
the Underwriter, which is fully approved by the Associated Factory Mutual  
Insurance Companies; Crosby Steam Engine Indicators, with Sar-  
gent's Electrical Attachment; Crosby Improved Steam  
Gages, Recording Gages and Patent Gage Testers.  
Original Single Bell Ohime Whistles.

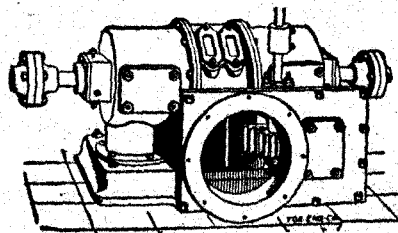
BRANDEN PATENT PUMP VALVES  
CLARK'S LINEN FIRE HOSE AND ADJUSTABLE COUPLINGS

All Kinds of Pressure and Vacuum Gages used in the Various Arts

Gold Medal Paris Exposition, 1889  
Ten Highest Awards Columbian Exposition, 1893

Main Office and Works..... BOSTON, MASS, U.S.A.  
Branch Offices at New York, Chicago, and London, Eng.

Underwriter



**"LITTLE GIANT"**  
TURBINE  
... FOR ALL PURPOSES ...

HORIZONTAL AND VERTICAL.  
BUILT IN 44 SIZES.

We guarantee a higher percentage of power from  
water used than any other wheel on the market.

Horizontal Type.

Water Wheel Governors, Machine Dressed Gearing, Pulleys, Shafting and Bearings.  
Catalogue and Gear List mailed on application. Correspondence Solicited.

**J. C. WILSON & CO., - - GLENORA, ONT.**