

O. O. CLEVELAND.G. F. CLEVELAND.**J. L. GOODHUE & CO.**

MANUFACTURERS OF SUPERIOR QUALITY

LEATHER BELTING**DANVILLE, - QUE.**

As Saw Mill work is the hardest that Belting has to do, we refer
by Permission to

Messrs. Gilmour & Co., Trenton, Ont.; The Rathbun Co., Deseronto, Ont.; Messrs. Boyd Caldwell & Son, Carleton Place, Ont.; The E. B. Eddy Manfg. Co., Hull, Que.; Messrs. Beck & Co., Penetanguishene, Ont.; Messrs. Flatt & Bradley, Casselman, Ont.; Messrs. Hall, Neilson & Co., Three Rivers, Que.; Cookshire Mills Co., Sawyerville, Que.; The Bennett Saw Mill Co., New Westminster, B.C.; The Waterous Engine Works Co., Brantford, Ont.; The Wm. Hamilton Manfg. Co., Peterborough, Ont.

THE CANADIAN LOCOMOTIVE & ENGINE CO., Ltd.,
KINGSTON, + ONTARIO.

MANUFACTURERS OF

Locomotive, Marine & Stationary Engines.
BOILERS OF ALL DESCRIPTIONS.

Sole Licensees and Manufacturers for Canada of Armstrong & Sims' High Speed Engines, The "Cycle" Gas Engine, Atkinson's Patent, The "Hazelton" Boiler.

DESCRIPTIVE CATALOGUES OF THE ABOVE ON APPLICATION.

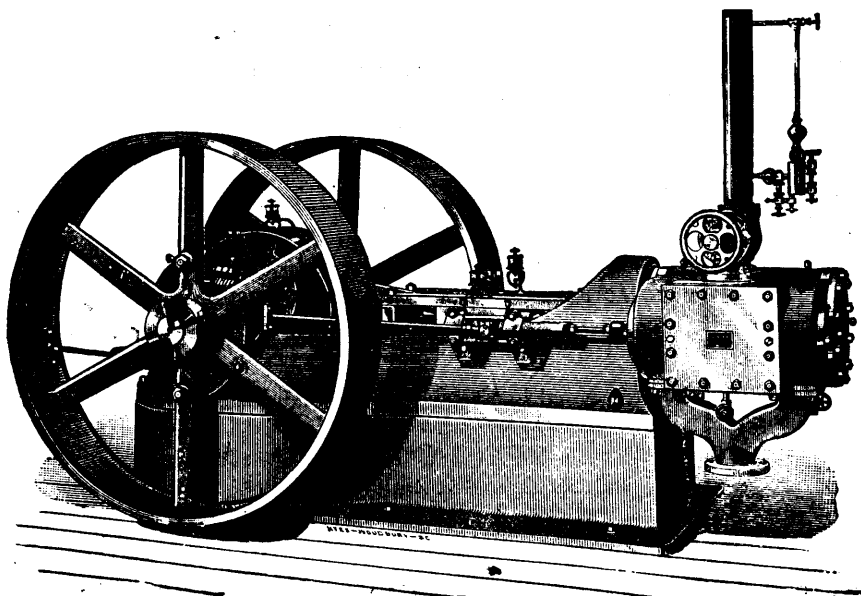
NOTICE.

The Canadian Locomotive & Engine Co., Limited, of Kingston, Ontario, have the Exclusive License for building our Improved Patent High Speed Engine for the Dominion of Canada, and are furnished by us with Drawings of our Latest Improvements.

(Signed),

ARMINGTON & SIMS.

PROVIDENCE, R.I., Nov. 18th, 1889.



ARMINGTON AND SIMS' HIGH SPEED ENGINE FOR ELECTRIC LIGHT PLANT, &C.