

Ontario Railway Aid Conditions.

Following is the complete text of the "Act respecting certain railways," passed at the recent session of the Ontario Legislature, & numbered chap. 28:—

1.—(1) Every subsidy heretofore granted out of the Consolidated Revenue Fund of this Province in aid of any railway shall as to any part thereof which is still unearned, & all subsidies hereafter granted to any railway out of the said fund, in addition to all other lawful requirements shall be subject to any conditions which may hereafter be imposed by order of the Lieutenant-Governor in Council respecting the toll to be charged to persons known as "settlers" or "prospectors" using any such subsidized railway or any part thereof, in connection with their prospecting & settling in the district in this Province through which the railway runs, either for freight or passenger service, & in default of compliance with the said conditions, or any of them, there may be deducted & retained from any monies payable in respect of such unearned subsidy or hereafter granted subsidy such amount as the Lieutenant-Governor in Council may think proper, & the railway company or any assignee of a railway company claiming such subsidy shall not be entitled to receive payment of the same, or if such subsidy shall have been paid over prior to such default the company operating such railway shall forfeit such part thereof as may be determined by Order in Council, & the same may be recovered back from such company with full costs of action at the suit of the Attorney-General of this Province in any court of competent jurisdiction.

(2) The words "settlers" & "prospectors" shall respectively be construed to include any person who shall have produced evidence to the proper officer of the said railway that he is an intending settler or prospector, as the case may be, in the district through which such railway runs, which evidence shall be deemed sufficient if it complies with the requirements of any Order in Council in that behalf, & the said words shall also mean & include every member of the family of a settler or prospector residing with him using such railway, or any part thereof, in connection with such prospecting & settling.

(3) The expression "toll" shall include any rate or charge for any passenger, ani-

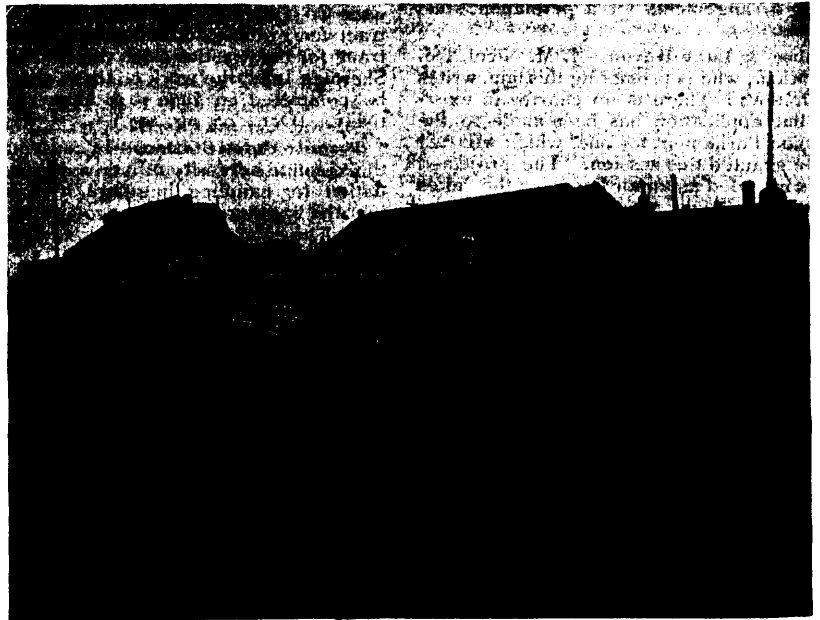
mal, carriage, goods, merchandise, matter or thing conveyed on the railway.

2. Every such unearned subsidy or hereafter granted subsidy, shall further be subject to the condition that the workmen, laborers, or servants employed in or about the construction & operation of the railway in aid of which such subsidy is granted, shall be paid such rate of wages as may be currently payable to workmen, laborers & servants engaged in similar occupations in the district in which such railway is constructed & operated & upon breach of such condition by the railway company there may be deducted & retained from any monies payable in respect of such unearned subsidy or hereafter granted subsidy such amount as the Lieutenant-Governor-in-Council may think proper, & in case the subsidy shall have been paid over before such breach, such part thereof as may be determined by Order-in-Council, may be recovered back from the railway company to

which the same was granted with full costs of action at the suit of the Attorney-General of the Province in any court of competent jurisdiction.

3. Every railway company receiving any subsidy either of money or of lands under any Act of the Legislature of Ontario, after the passing of this Act, or any railway company heretofore receiving any subsidy either in money or in lands, part of which is still unearned, shall, as far as practicable, construct, equip & operate their lines of railway with railway supplies & rolling stock made, purchased or procurable in Canada, providing such railway supplies can be obtained as cheaply and upon as good terms in Canada as elsewhere, having regard to quality & price, & unless the Lieutenant-Governor-in-Council shall approve of the same being procured elsewhere.

4. No person shall be employed in the construction of any railway receiving a subsidy



Page Fencing on Canadian Pacific Railway, Fredericton, N B.

THE PAGE WIRE FENCE CO., LTD., WALKERVILLE, CANADA.



IF time has a commercial value:
promptness secures business
immediate information is required:
an answer is wanted, and wanted quick:
you are not in business for exercise:

**STAY AT HOME
AND TELEPHONE.**

The Bell Telephone Company of Canada
will be pleased to furnish details.

Brantford "Red Bird"

Is fitted with the most up-to-date equipment—perfect in every essential point for comfort and safety—one worthy of the high-grade machine that it is—options enough to please everybody.

Agents everywhere.
Write for Catalogue.

SOLE REPRESENTATIVE

Canada Cycle and Motor Co., Limited
Toronto, Canada.