

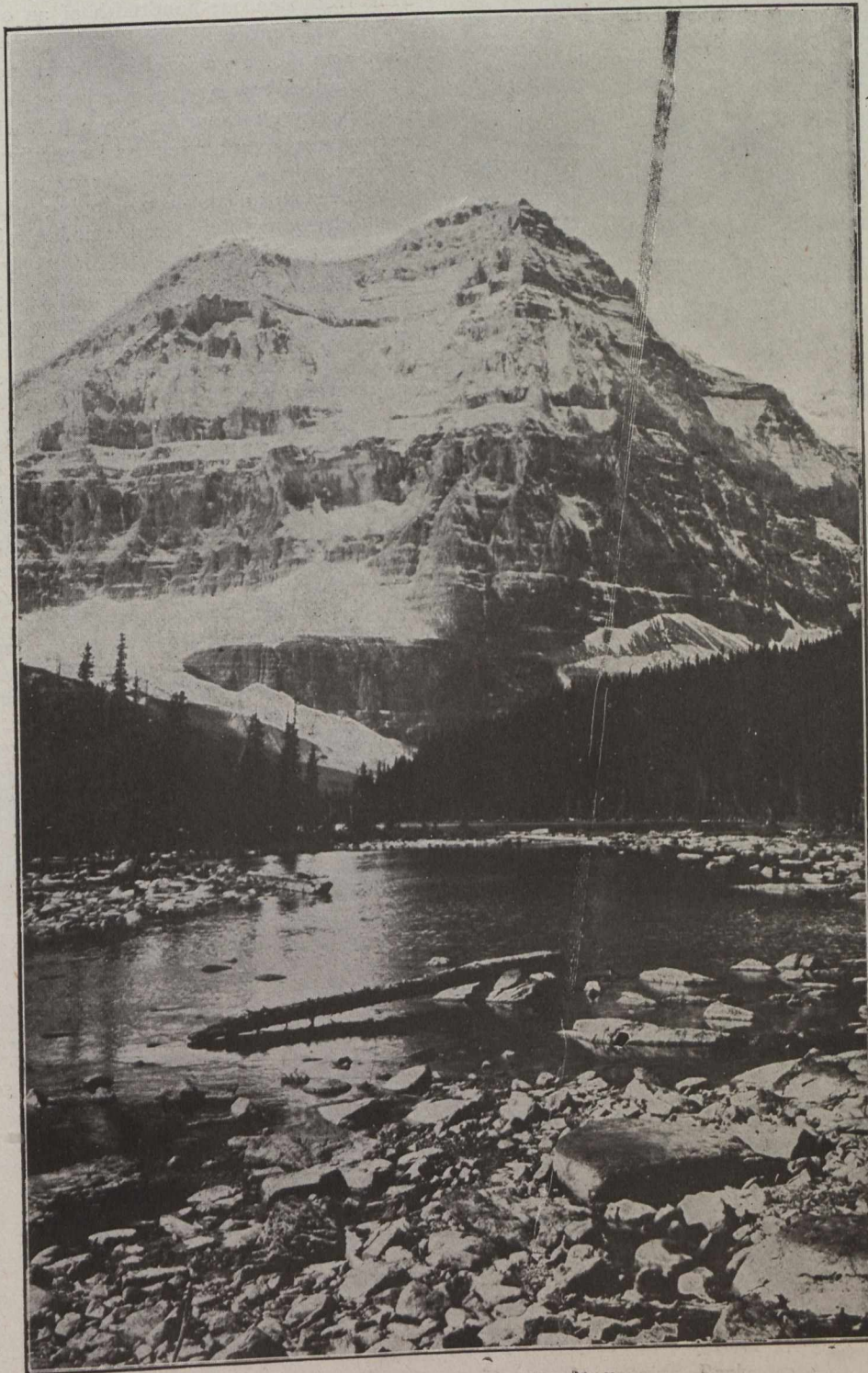
Arkansas. Last year the government opened at the lower springs what is undoubtedly one of the finest public baths on this continent. It is built on the lower side of Sulphur Mountain, commanding a picturesque view of the Bow Valley and the surrounding peaks, its native limestone and red tiles blending harmoniously with the landscape. The chief feature is a large, open, swimming pool, 150 feet long by 35 feet wide, supplied by the hot sulphur water which issues through a cave from the side of the mountain. There is, in addition, an older bathing establishment higher up on another side of the mountain. It is possible even in zero weather, with icicles forming around the edges of the pool, to enjoy a warm bath of about 90°.

This park is also being rapidly opened up to the motorist. The new automobile road from Calgary to Vancouver passes through the park, touching Banff and two or three of the smaller townsites. The Dominion Government is building the sections that lie within the parks, and has already completed the grading of the road which extends from the eastern limits of Rocky Mountains Park to the summit of the mountains. The average grade is 4% with a maximum of 6.5%, and the road passes through the heart of some of the finest scenery in the parks. A branch section which will be appreciated by motorists is also being constructed from Castle to the famous Lake Louise. Three miles of this road, which will total eighteen in all, were built this summer by the alien prisoners who were quartered in the park, and it is intended to prosecute the completion of the remaining fifteen as rapidly as possible next season.

In Yoho Park, also, preparations are being made for the introduction of the motor. This year the road from Field up to the wonderful Yoho Valley to Takakkaw Falls and the Yoho Glacier, was improved and widened and will probably be accessible by automobile for its entire distance by the fall of 1916. A motor loop road is also under construction from Field to Otertail

Valley, returning by way of the Kicking Horse Canyon and the Natural Bridge. When these roads are finally completed, traffic to the parks will no doubt be increased by large numbers of motorists who will want to take advantage of the opportunity of spending a holiday in their favorite way among scenery of unparalleled grandeur.

This active policy of development with regard to the Dominion Parks indicates that the government believes they are a sound business investment, and in this view they are in line with the policy regarding parks adopted in New Zealand and the United States. But their greatest value, after all, cannot be reckoned in dollars and cents. They have great potentialities of wealth, but they are worth more for their potentialities of pleasure and vitality. They are great playgrounds set aside forever so that the time may never come in Canada, as it has already come in England and



Mount Ball, near Banff, Rocky Mountains Park.

Scotland and is fast coming in the Eastern United States, when a great majority of the forest scenic areas will be in great preserves owned by the wealthy, into which the people are not allowed to come.

The Canadian parks are in reality the people's estates, providing facilities for the best kind of recreation, that which is found by getting close to nature in the great