

**Our Two G's Booklet
Helps You Picture
Just How
A Greenhouse Will Look
On Your Grounds**

YOU can turn its leaves and see a snug little leanto, quite as it might look against your garage; or the even span house in different sizes and their effect when also garage-linked.

You can see the separate houses with their several different garden plots and attractive work rooms.

You can see the extensive groups of houses, with growing room for the fruits and flowers of the tropics, along with the choice ones of our climes.

With its aid you can picture the joys of a perpetual garden of old-fashioned flowers, under glass.

You can begin to appreciate the unlimited pleasurable possibilities of a greenhouse

From the general character of the booklet itself; and the kind of houses shown; together with the names of the people who own them; you can come to a decision concerning who should best build your greenhouse.

At this point, a letter to us will bring our heartiest co-operation, in planning and suggesting a design for a house that will best suit *your particular* desires and needs.

Write for Booklet No. 142.

Lord & Burnham Co.

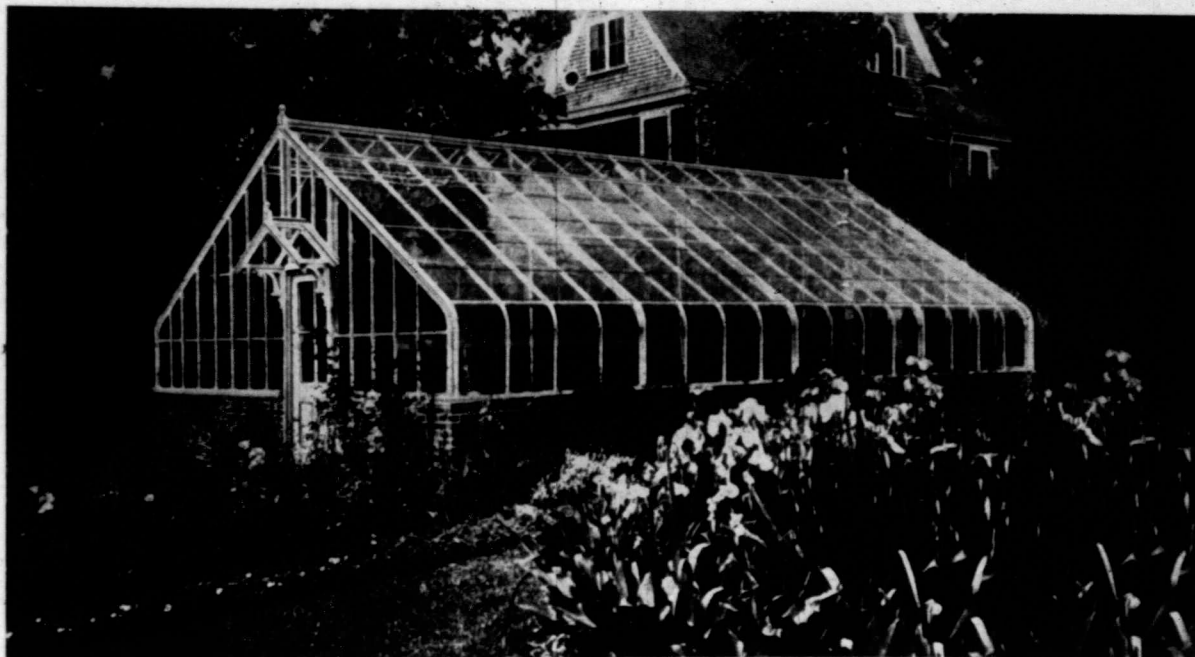
OF CANADA

Builders of Greenhouses and Conservatories.

Royal Bank Bldg., Toronto.

Transportation Bldg., Montreal.

Factory, St. Catharines, Canada.



A one compartment glass garden 15 feet wide and 33 feet long. Let us tell you its approximate cost.