

ECONOMIC POSSIBILITIES OF YUKON—CAIRNES

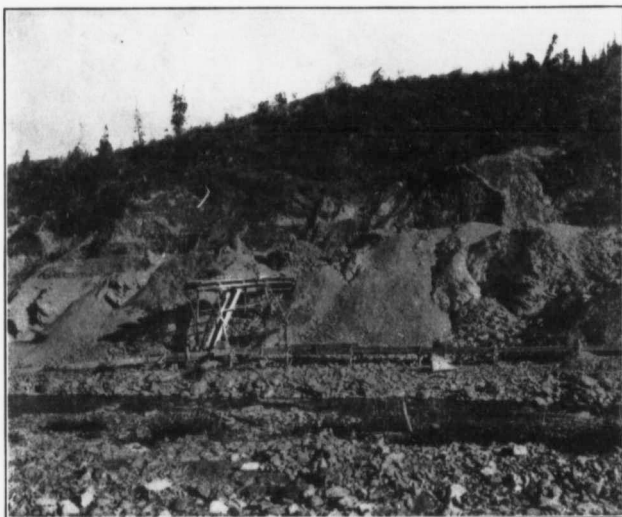


Plate IV.—Working high level old channel gravels on Burwash creek, Klauene district, summer of 1914. Gravels cleaned off bedrock are wheeled in barrows to tipple and dumped into sluice boxes below.

as 10 years more may be required, but just how far the operators there can go with their present equipment is problematical, depending largely on the amount of thawed ground remaining unworked. It is to be expected that the mining operations and production throughout the district will gradually diminish in extent and amount as the task of exhausting the gravels of their gold content nears completion. New discoveries of more or less importance may be made, however, which will tend to somewhat lengthen the productive life of the district.

The question as to the amount of gold that will still be produced from the known gold-bearing gravels of Yukon is largely a matter of costs, and is thus also problematical. At the close of the season of 1906, Mr. McConnell estimated the future output of Klondike district, not including the Indian River