

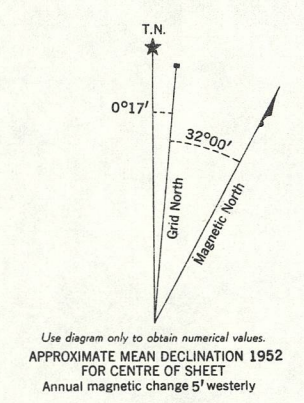
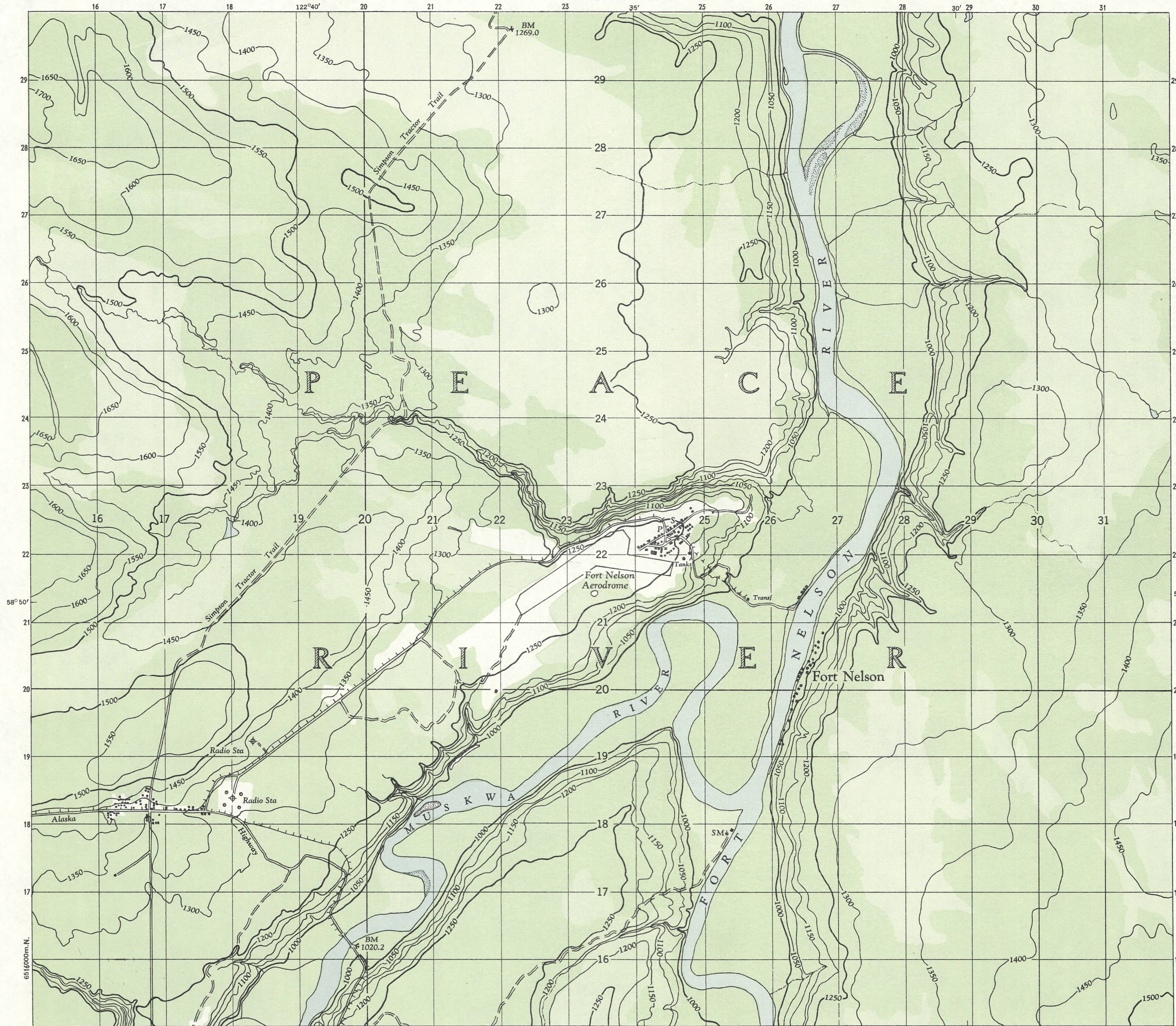
BRITISH COLUMBIA

1:50,000

# FORT NELSON

First Edition

CANADA PARTS OF 94 1/15



TO OBTAIN GRID REFERENCE ON THIS SHEET  
 FIGURES, IGNORE THE SMALLER FIGURES PRINTED AROUND THE MARGIN  
 OF THE MAP. THESE ARE FOR FINDING THE FULL CO-ORDINATES.  
 USE ONLY THE LARGER FIGURES PRINTED IN THE MARGIN OR  
 ON THE FACE OF THE MAP. VIZ. 6516

POINT		SAW MILL	
FOR STANDARD MILITARY GRID REFERENCE			
East	North	East	North
Take West edge of square in which point lies, and read the figure printed opposite this line on North or South margin or on the line itself on the face of the map.	Take South edge of square in which point lies, and read the figure printed opposite this line on East or West margin or on the line itself on the face of the map.	25	17
Estimate tenths Eastward.	Estimate tenths Northward.	253	17.8
STANDARD MILITARY GRID REFERENCE		253178 (To nearest 100 Metres)	
Nearest similar grid reference - 100,000 Metres (Approximately 62 Miles)			

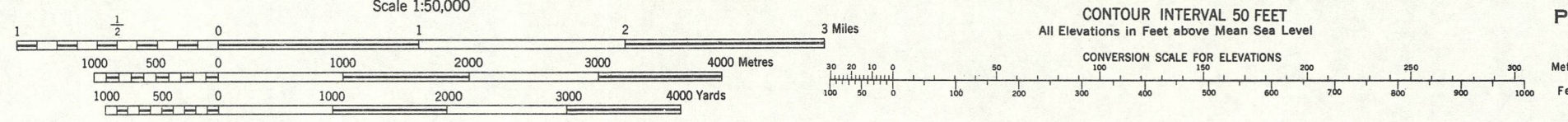
ONE THOUSAND METRE  
 UNIVERSAL TRANSVERSE MERCATOR GRID  
 ZONE 10

Note: Copies of this map required for official  
 purposes may be obtained from the Army Survey  
 Est. AHQ, Ottawa.

## FORT NELSON PARTS OF 94 1/15

FIRST EDITION  
 PRELIMINARY MAP

Aerial photography by the R.C.A.F. 1948  
 Surveyed, compiled, drawn and printed  
 by the Army Survey Est. R.C.E. 1951-52



McGILL UNIVERSITY  
 MAP COLLECTION  
 SUPERSEDED  
 EDITION  
 GEOGRAPHY DEPARTMENT  
 MONTREAL