

some of these qualities to the stock with which it is interbred.

**Cattle.** The chief breeds of cattle raised in Western Canada are :

**Beef Breeds :**

Shorthorn.	Aberdeen-Angus.
Hereford.	Galloway.

**Dual Purpose :**

Shorthorns (certain strains).	Red Polled.
-------------------------------	-------------

**Dairy Breeds :**

Holstein-Friesian.	Jersey.
Ayrshire.	Guernsey.

The Shorthorns and Herefords are the heaviest of the beef breeds. They are big, growthy, square-

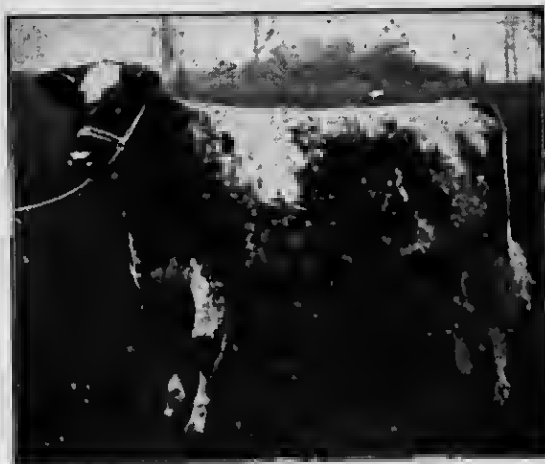


FIG. 84. THE SHORTHORNS ARE RED, ROAN, AND WHITE.

built cattle. The Aberdeen-Angus is round in conformation rather than square. The Galloway is a heavy - coated, hardy animal. Both the Galloway and the Aberdeen-Angus

are black, while the Shorthorns are red, roan, or white, and the Herefords are red and white. The