

ing for some time in the shock. In a southerly climate, or where grain is cut dead ripe, the machine might be useful.

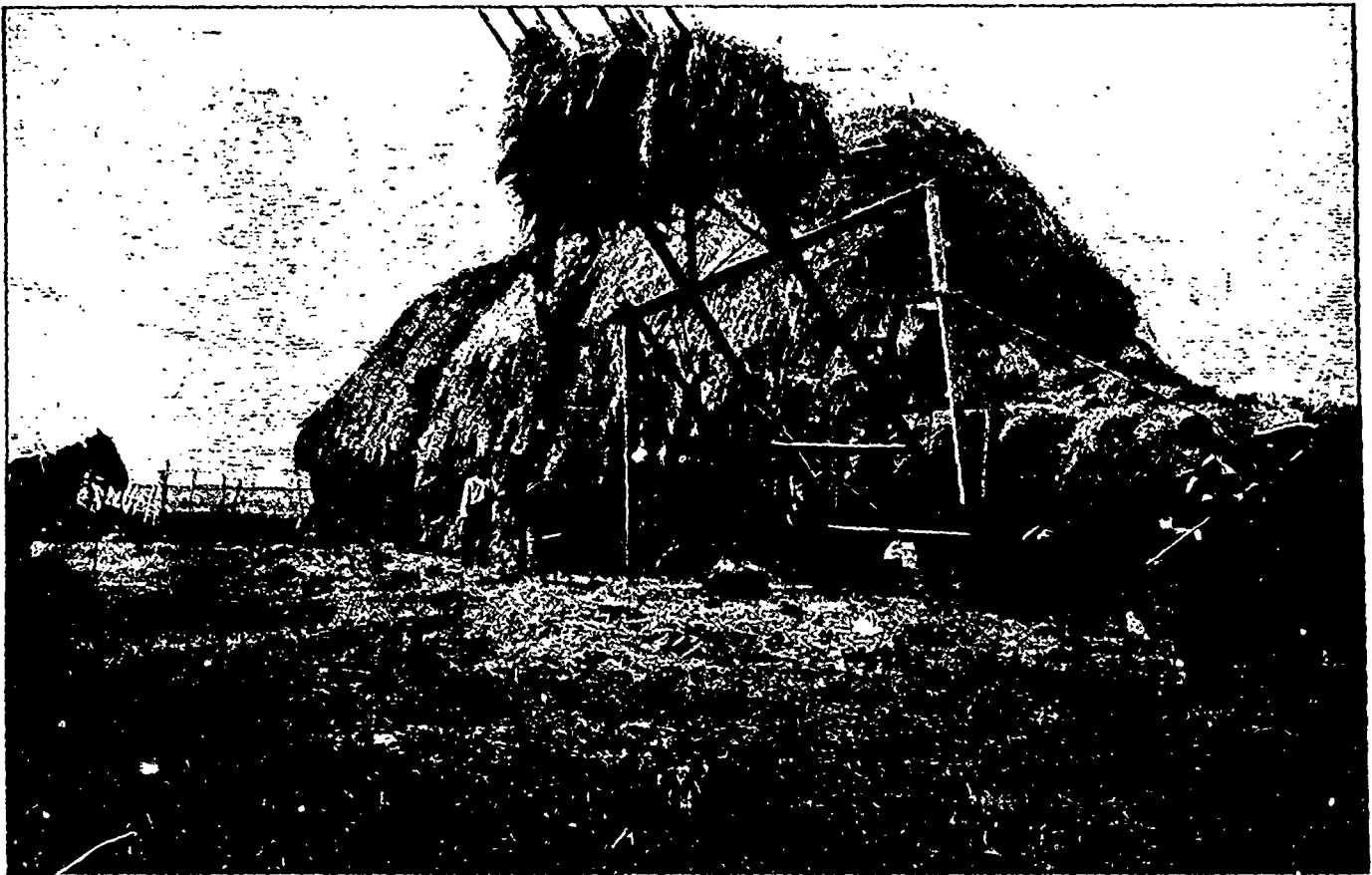
### IRRIGATION IN ALBERTA

Last week and the week previous we gave illustrations which were calculated to arouse interest in the question of irrigation in our western districts. This week we produce an illustration which will give an ocular demonstration of what can be accomplished by means of irrigation. The illustration shows the process of stacking a heavy crop of hay grown on irrigated land. This hay was grown on land which without irrigation

### EXPORT LUMBER TRADE.

The lumbermen of eastern Canada held a meeting at Toronto and discussed the situation regarding the export lumber trade very fully. The principal point discussed was the advisability of prohibiting the exportation of saw logs from Canada. It is worthy of note that a resolution in favor of prohibiting the exportation of logs from Ontario was carried by a vote of forty-eight to eleven. The lumbermen are the principal persons interested in this question. They know that the prohibition of the exportation of logs from Canada would lead to the doubling of the present duty on lumber shipped to the United

States citizens an undue advantage over Canadians, in manufacturing Canadian forest products. United States citizens can come into Canada, cut our timber, raft it across the lake to the Michigan side, and there manufacture it into lumber free of duty, while the Canadian manufacturer is charged a duty of \$2 per thousand on lumber exported to the United States. The result of this anomalous and unreasonable situation is, that the Canadian lumberman is discriminated against in his own forest. Canadian raw material, shipped to a foreign country, has an advantage over the manufactured product made from the



IRRIGATION IN ALBERTA

Automatic Stacker Handling Hay grown on W. R. Hull's Irrigated Farm.

would not produce anything but a grass crop, suitable only for grazing. In the range country irrigation has been reported to produce fodder crops for winter feeding with excellent results. Good crops of hay have been secured and excellent crops of vegetables have been produced. Grain crops have not been grown largely, except to cut green for fodder.

### THE NEW TARIFF.

All new subscribers to The Commercial will be supplied with a free copy of the new Canadian tariff, in handy pamphlet form. The complete tariff is given, word for word, and not a mere summary of the act.

States, yet in the face of this fact, the lumbermen, who are the people upon whom the blow would fall, are evidently willing to face and suffer the consequences. There were a few among them who were willing to submit to the present duty, rather than provoke a further increase in the duty, but the great majority were manfully willing to submit to the entire destruction of their trade with the United States, rather than submit to the injustice of the present situation.

The Commercial, in a recent issue, showed what the injustice of the present situation is. The United States has not only undertaken to impose a duty on lumber, but congress has en-

deavored to give United States citizens an undue advantage over Canadians, in manufacturing Canadian forest products. United States citizens can come into Canada, cut our timber, raft it across the lake to the Michigan side, and there manufacture it into lumber free of duty, while the Canadian manufacturer is charged a duty of \$2 per thousand on lumber exported to the United States. The result of this anomalous and unreasonable situation is, that the Canadian lumberman is discriminated against in his own forest. Canadian raw material, shipped to a foreign country, has an advantage over the manufactured product made from the

This certainly is a situation which should not be tolerated. The fact is, the prohibition of the exportation of logs from Canada would work more to the detriment of the United States than it would to this country, though our lumber trade would of course suffer severely for a time. At the same time, the question of conserving our