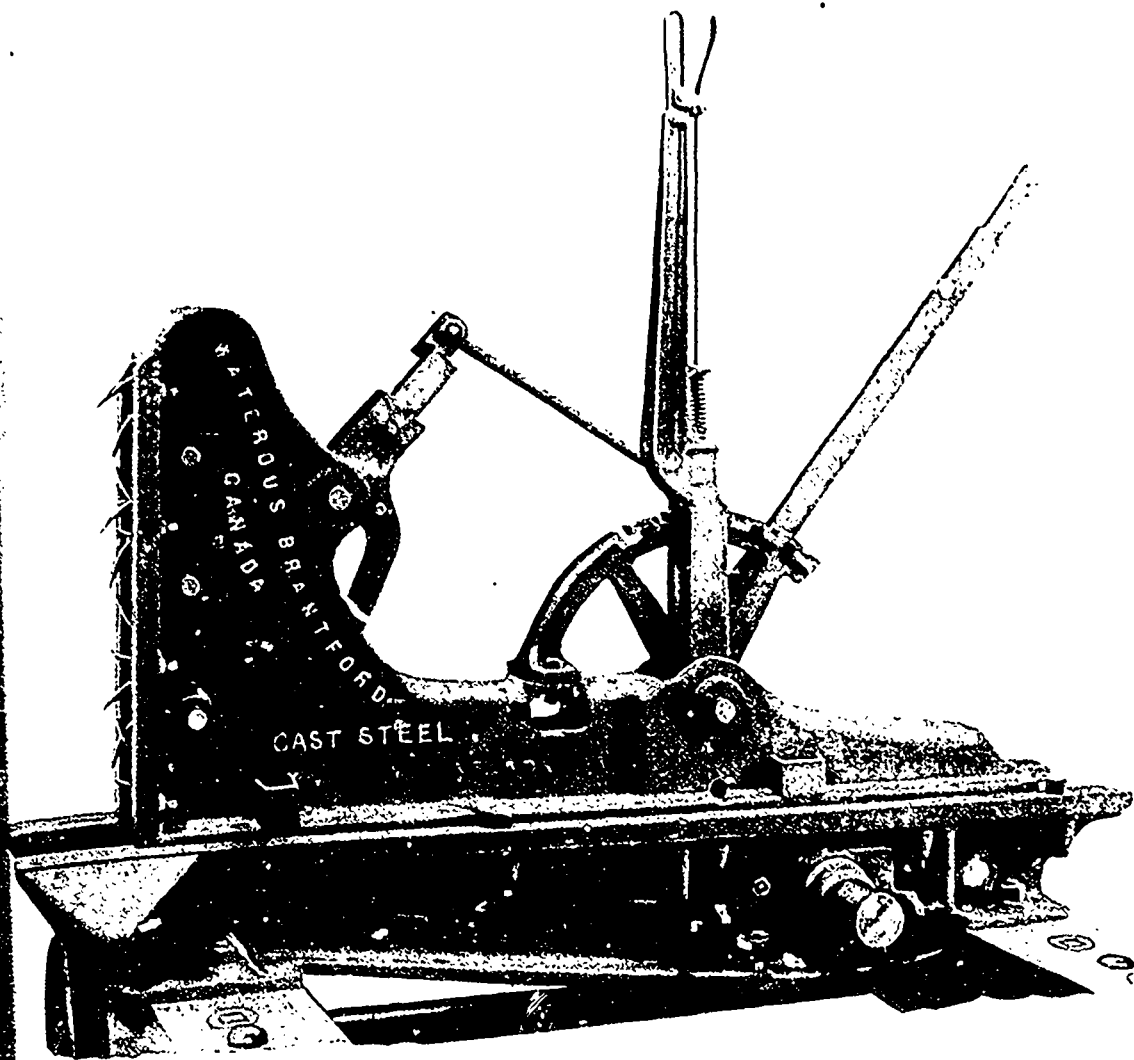


3 Saw Mill Specialties for 1902



This new Cast Steel SAW MILL CARRIAGE

Combines Lightness
and Strength

The cut illustrates
No. 2 size 40 in. opening
with dog lever brought
to setter's hand.

Lever connection to
steel segment is made at
back end of segment
with two steel straps and
adjustable nut, making
adjustment of knee quick
and accurate.

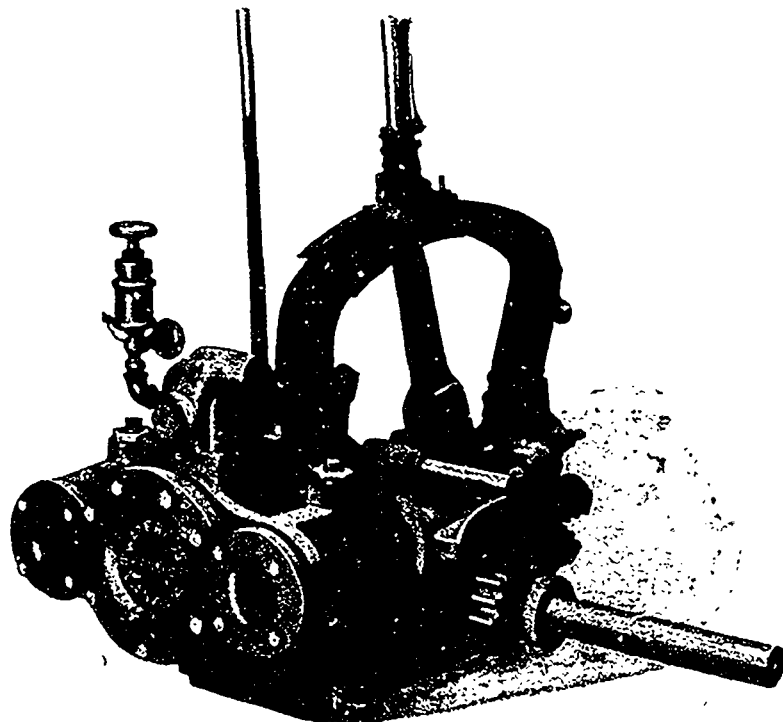
Log seat is faced
with 3" x 1" steel on each
side which gibs knee
down.

No better carriage
built in America.

Canadian Agents for Corry & Baker's

Patent Steam Set

Simple, easy of attachment to any carriage; operates your set works by steam in place of muscle; never gets tired; as fresh after 50,000 as before. This machine makes setting, which is one of the hardest places in the mill, most easy, increasing cut of mill 5 to 8,000 feet per day; combined with our new 18 inch 4 inch face steel wheel set works, makes a rig unsurpassed.



REGULAR RESAW

For Slabs, Deals, etc. Has 14 inch diameter rollers, one stationary operated by set works to thickness, the other yielding operated by Steam Cylinder and Spring. 36 inch. Satisfaction guaranteed.

Waterous, Brantford, Canada