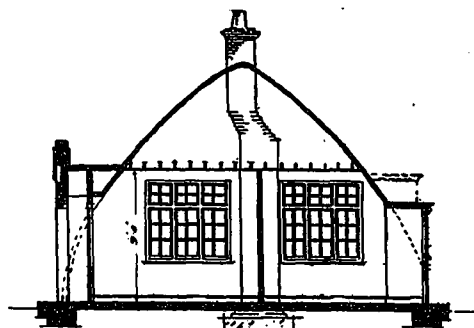
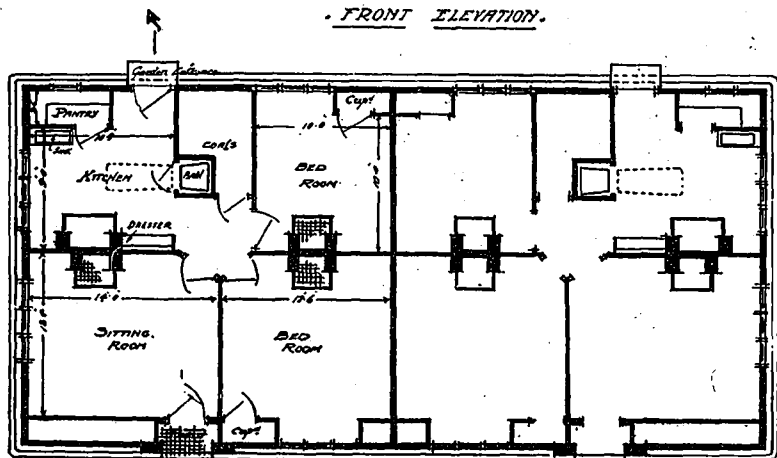


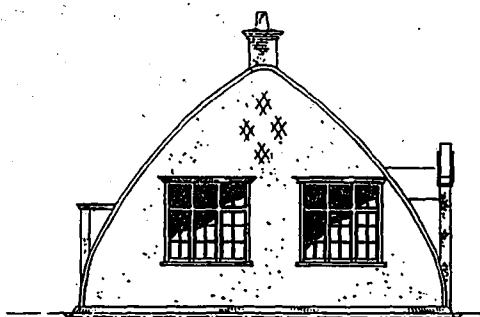
FRONT ELEVATION.



SECTION A-A.



PLAN.



END ELEVATION.

SUGGESTED DESIGN FOR REINFORCED CONCRETE COTTAGE OF SEMI-DETACHED TYPE.

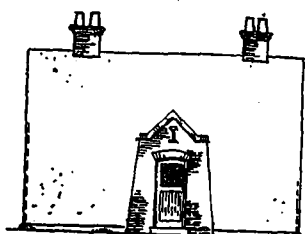
### A New Type of Concrete Cottage

The illustrations on this page show a suggested scheme for a rather unique type of workman's cottage, published recently in the "Concrete and Constructional Engineering." Reinforced concrete is the material to be used with the roof designed to form an unbroken continuation of the front and rear walls. This, it is pointed out, will dispense with the use of timbers in the roof, as well as with the rain pipes and gullies which are otherwise necessary for carrying water from the roof. Economy is also effected in the fact that no slates or tiles are em-

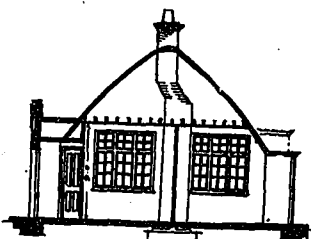
ployed for covering the roofs, or lead dressings or other materials used.

The whole of the exterior will be finished with roughcast cement plastering relieved with brick work to the chimneys and entrance porches, thus lending color to the whole scheme, and giving a pleasing effect when surrounded with trees and foliage.

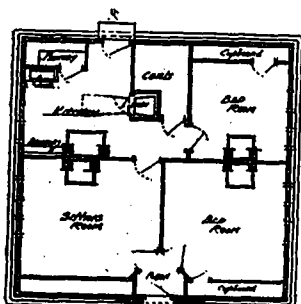
The interior and ceilings will be plastered, and the various rooms planned and fitted to meet the requirements of an up-to-date labor saving dwelling, the accommodation being indicated in the plan. It is claimed that the cost involved by this method, based on estimates submitted by reliable builders, would be considerable less than the older forms of construction.



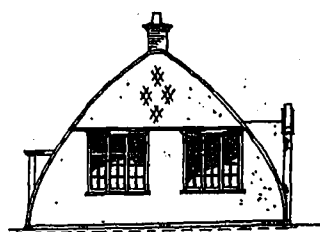
FRONT ELEVATION.



SECTION A-A.

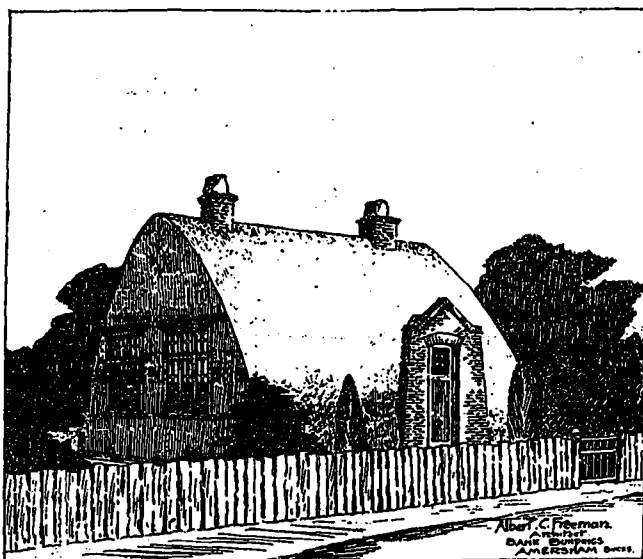


PLAN.



END ELEVATION.

REINFORCED CONCRETE COTTAGE, OF DETACHED TYPE.


 Albert C. Freeman.  
 Architect.  
 2410 Broadway,  
 New York City.