

A. B. C. & A. 1 Codes Used

Telegraphic Address, Latch, Haymills

# LATCH & BATCHELOR, L<sup>t</sup>d.

AMALGAMATED WITH  
**WEBSTER & HORSFALL,**

(ESTABLISHED 1730)

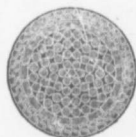
Works : **HAYMILLS, BIRMINGHAM, ENGLAND.**

AGENT: **H. M. WYLDE,** P O Box, 529 **HALIFAX N. S.**

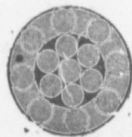
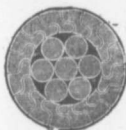
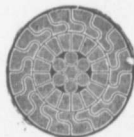
Patentees and Manufacturers of

## Locked Coil and Flattened Strand **WIRE ROPES.**

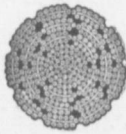
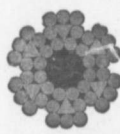
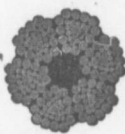
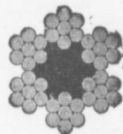
Manufacturers of all Kinds of **WIRE ROPES** for  
**Mines, Tramways, Aerial Ropeways, Suspension**  
**Bridges, Cranes, Elevators, Transmission of**  
**Power, Steam Ploughing and General**  
**Engineering Purposes.**



Locked Coil Winding Cable.



Locked Coil Aerial Cable or Colliery Guide.



Lang's Lay or ordinary Patent Flattened Strand Winding or Hauling. Patent Flattened Strand, (non spinning)

**DRAWERS OF** all Sections **STEEL-WIRE.**  
**HIGH CLASS**  
for Ropes, Springs, Pianos, Needles, Fish-Hooks  
Binding Armatures and all other Purposes.