

Financial, Commercial and Real Estate

SAFETY DEPOSIT BOXES

Do not trust to your own means for the protection of your Securities, Deeds and other valuable papers. Keep them in a box in our Safety Deposit Vault, where they are absolutely secure against fire and other elements of risk. Boxes \$3 per year and up. Vaults open every day during banking hours. Your inspection is invited.

The Royal Loan & Savings Company

38-40 Market Street - Brantford

THE STANDARD BANK OF CANADA

Established 1823 115 Branches

BRANTFORD BRANCH, - W. C. Boddy, Manager

Savings Bank Department

An Absolutely Secure Investment

Guaranteed Mortgage Investments provide—first, absolute security of capital and interest; second, five per cent. interest paid half-yearly; third, freedom from attention to details of title searching, interest collection, etc.

Write for booklet, "Mortgage Investments Guaranteed."

The Trusts and Guarantee Company, Limited

HEAD OFFICE: Toronto, Ontario
JAMES J. WARREN, General Manager,
President.

BRANTFORD BRANCH:
T. H. MILLER, Manager,
114 Dalhousie Street.

SYNOPSIS OF CANADIAN NORTHWEST LAND REGULATIONS.

THE sole head of a family, or any male over 18 years old, may homestead a quarter section of available Dominion land in Manitoba, Saskatchewan or Alberta. Applicant must appear in person at the Dominion Lands Agency or Sub-Agency for the District. Entry by proxy may be made at any Dominion Lands Agency (but not Sub-Agency) on certain conditions.

Duties—Six months' residence upon and cultivation of the land in each of three years. A homesteader may live within nine miles of his homestead on a farm of at least 80 acres, on certain conditions. A habitable house is required except where residence is performed in the vicinity.

In certain districts a homesteader in good standing may pre-empt a quarter-section along-side his homestead. Price \$3.00 per acre.

Duties—Six months' residence in each of three years after earning homestead patent; also 50 acres extra cultivation. Pre-emption patent may be obtained as soon as homestead patent on certain conditions. A settler who has exhausted his homestead right may take a purchased homestead in certain districts. Price \$3.00 per acre. Duties—must reside six months in each of three years, cultivate 50 acres and erect a house worth \$200.

The area of cultivation is subject to reduction in case of rough, scrubby or stony land. Live stock may be substituted for cultivation under certain conditions.

W. W. CORT, C. M. G.,
Deputy of the Minister of the Interior.
N.B.—Unauthorized publication of this advertisement will not be paid for.—4438

THE FRENCH FLEET MADE SOME CALLS

Austrians Fled on Special Trains as Soon as Battleships Appeared.

BORDEAUX, Oct. 10.—According to an official announcement made by the French Government yesterday the French fleet, commanded by Vice-Admiral Boue de Lapeyere, af-

THE TORONTO GENERAL TRUSTS CORPORATION

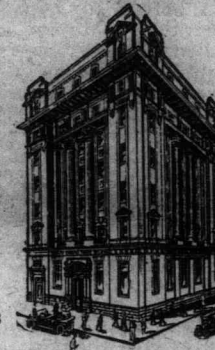
Established 1882 Capital \$1,500,000.00 Reserve \$1,500,000.00 Total Assets, \$4,055,883.97

Appoint Your Executor

When you make your will, appoint The Toronto General Trusts Corporation as Executor. This will assure a permanent and efficient executorship, also that the terms of your will shall be impartially carried out, and that the estate will be ably managed by experts. We have had thirty-two years experience and now have under administration Estates, etc., amounting to \$51,176,929.76.

Write for our Booklet "The Making of a Will"

HEAD OFFICE: TORONTO, Bay and Melinda Streets
Branch Offices: Ottawa, Winnipeg, Saskatoon



THE BETTING

(Continued from Page 1)

however, many bets being placed at 5 to 5 and 2 to 1.

The weather this morning was very cloudy and damp with indications that light rain might fall during the second world's series baseball game this afternoon between the Boston Nationals and Philadelphia.

Boston supporters were in a happy mood last night. While they were greatly in the minority around the hotels and cafes, their enthusiasm made up for what they lacked in numbers. "Four straight," was their slogan, but they found little difficulty in placing all wagers that the Braves would be the ultimate victors.

The general opinion was that Manager Stallings would send Taylor, the Boston "southpaw" pitcher, to the mound to-day, while it was believed that Connie Mack's choice, would be Eddie Lank, also a "porter" and a veteran of several world's championship series.

Philadelphia took the chaffing flung at them by the Boston contingent, good naturedly and pointed to the fact that two years ago the Athletics lost the first game to the New York Giants and afterwards won the championship easily. Bender's defeat was especially disappointing to local fans as they had counted on him as a sure winner.

admitted, however, that even if the Indian pitcher had been at his best, that it would have been a difficult proposition to beat the Braves with Rudolph working as he did and the other members of the team backing him up at every stage of the game.

There seemed to be little doubt in the minds of any of the Athletics' followers that if Manager Mack saw fit to use Plank to-day that sundown would find the series tied at one game each.

The ticket speculating fraternity won a legal victory when habeas corpus proceedings forced the release of those arrested for vending admission tickets yesterday. Few tickets for to-day's game, however, were in the hands of the speculators, as the hour of the game had passed.

The builders of miniature grandstands on house-tops, and the grocers also scored a legal victory in the series seemed accentuated, if that were possible, by the victory of the Braves. Before yesterday's game was ended a new line had been started outside the bleacher entrance in anticipation of to-day's game. At nightfall scores of determined fans were in the line, which increased by leaps and bounds until early to-day thousands were in the vicinity of Shibe Park, anxiously awaiting the opening of the gates and an opportunity to purchase bleacher seats.

The probable line-up for to-day's game follows:

Boston: Mann, rf. Murphy, lf. Evers, 2b. Oldring, lf. Cather, lf. Collins, 2b. Whitfield, cf. Baker, 3b. Schmidt, lb. McInnis, lb. Gowdy, c. Strunk, cf. Maranville, ss. Barry, ss. Deal, 3b. Schang, c. Tyler, p. Plank, p.

Philadelphia: Murphy, lf. Oldring, lf. Collins, 2b. Baker, 3b. McInnis, lb. Strunk, cf. Barry, ss. Schang, c. Plank, p.

Philadelphia: Murphy, lf. Oldring, lf. Collins, 2b. Baker, 3b. McInnis, lb. Strunk, cf. Barry, ss. Schang, c. Plank, p.

Philadelphia: Murphy, lf. Oldring, lf. Collins, 2b. Baker, 3b. McInnis, lb. Strunk, cf. Barry, ss. Schang, c. Plank, p.

Philadelphia: Murphy, lf. Oldring, lf. Collins, 2b. Baker, 3b. McInnis, lb. Strunk, cf. Barry, ss. Schang, c. Plank, p.

Philadelphia: Murphy, lf. Oldring, lf. Collins, 2b. Baker, 3b. McInnis, lb. Strunk, cf. Barry, ss. Schang, c. Plank, p.

Philadelphia: Murphy, lf. Oldring, lf. Collins, 2b. Baker, 3b. McInnis, lb. Strunk, cf. Barry, ss. Schang, c. Plank, p.

Philadelphia: Murphy, lf. Oldring, lf. Collins, 2b. Baker, 3b. McInnis, lb. Strunk, cf. Barry, ss. Schang, c. Plank, p.

RUSSIANS ARE

(Continued on Page Four.)

attack on the German left wing, but it was quickly repulsed. The firing lasted about thirty minutes. The Russian artillery, which evidently has been reinforced by heavy artillery from Kovno, at times shot well but often their shells fell short of the position of the German artillery.

Great damage has been done everywhere in the country in which the fight has been raging and several villages have been burned.

The German soldiers everywhere are in the best of spirits. They are well provisioned as the supply arrangements are working without a hitch; all the roads leading from the fighting zone are filled with refugees, carrying their household effects and many of them driving their cattle before them.

RUSSIAN SECRECY

Is Now Being Strictly Enforced in Regard to New Movements.

PETROGRAD, Oct. 10.—"It seems an opportune moment," says a statement from the official news bureau, "to call attention to the fact when the general staff headquarters gave an account of the event which had transpired in the fighting in Galicia, it furnished a sufficiently detailed outline of the strategic developments of the Russian armies on the Austrian front."

The fighting in Galicia which weakened considerably the Austrian army, compelling it to make a prolonged retreat, forced the Germans to throw the bulk of their forces on the eastern front to the rescue of the Austrians and created entirely new conditions in which we undoubtedly make us adopt corresponding measures.

"It is easy to understand the particular importance of keeping secret as long as possible the details of the Russian troops on the eve of the great events. It seems it is to this circumstance that we must attribute the brevity and dearth of official communications on the present situation in Galicia and on the west bank of the Vistula."

"If these conjectures prove to be true, public opinion will very soon be satisfied (as during the first ten days of the war) with the meagre details in the official communications, trusting in final success and awaiting the time when it will be possible, without divulging military secrets, to lift the veil which must always cover the first phases of a new born military operation."

Battle Tide Flows Slowly About France

(By Special Wire to the Courier)

PARIS, Oct. 10.—7 a.m.—In contrast to the rapidity with which the Germans have conducted their campaign against Antwerp the tide of battle is flowing slowly in certain parts of France. The engagements in the Woëvre district, according to the statements of wounded soldiers, who have been brought back from this territory, continue to take the form of a slow and steady siege.

The German trenches in the Woëvre have been constructed in two lines, one behind the other. The outermost is furnished with quick-firing guns, with outposts constantly on guard. In the meantime the larger detachments shelter themselves in the second line. These trenches are large and comparatively comfortable, and at intervals they broaden out into subterranean rest rooms in which the troops may sleep in comparative safety. The first line may be reached from the second through underground passages.

The daily routine of the German forces in these trenches is

FOR SALE!

House 157 Terrace Hill St., white brick, 1½ storey, containing parlor, dining-room, kitchen, large pantry, 2 bedrooms, bathroom; also large chicken house. Lot 35 ft. 11 in. by 38 ft. 6 in. Price \$1500. Terms easy.

For Sale or To Rent

New house, 104 Rawdon St., \$13 per month, or would sell on easy terms.

To Rent

29 Burford St., first-class brick cottage, Oct. 10th, \$12.50. Suite of rooms at 133½ Colborne St., \$12. 242 Wellington, \$13. 67 Dundas St., Oct. 28, \$10. Flat, Lorne Building, \$10. 262 Darling St., brick house, \$14. 149 Bruce St., frame house, \$8. 51 Park Ave., brick house, all conveniences, \$20. 42 Lyons Ave., brick house, \$12. 540 Colborne St., brick house, all improvements, \$22. 42 Sheridan St., \$11. 55 Mohawk St., 2 storey brick, \$12. Large barn at rear of Lorne Bldg., accommodation for 4 horses, \$12.

S. G. READ & SON, Limited

129 COLBORNE STREET

WAR BARGAINS

Two new 3-bedroom brick cottages for sale. Price \$1050 each. A one-storey frame cottage on stone foundation, containing parlor, dining-room, summer kitchen, 3 bedrooms, electric lights all through house, sewer connections, lot 52 ft. by 132 ft. Rents for \$11.00 per month. Price \$1250, \$200 down, balance on mortgage.

MARKET REPORTS

CHICAGO, Oct. 9.—Belief that advancing prices had checked the European demand resulted today in a downward swing for wheat. The market closed nervous, ¼¢ to ½¢ under last night. Corn lost ¼¢ to ½¢ net, and oats ¼¢ to ½¢. In provisions the outcome varied from 20¢ decline to a rise of 2½¢.

WINNIPEG GRAIN MARKET.
Wheat, fall, bushel, \$1.15 to \$1.16. Goose wheat, bushel, \$1.10. Barley, bushel, \$1.05. Peas, bushel, \$1.25. Oats, bushel, \$0.82. Rye, bushel, \$0.85. Buckwheat, bushel, \$0.75.

TORONTO DAIRY MARKET.
Butter, creamery, lb. eq., \$0.23 to \$0.24. Butter, creamery, solid, \$0.27 to \$0.28. Butter, separator, dairy, \$0.27 to \$0.28. Cheese, new, lb., \$0.19 to \$0.20. Eggs, new-laid, \$0.27 to \$0.28. Honey, new, lb., \$0.13 to \$0.14. Honey, comb, dozen, \$2.50 to \$2.60.

TORONTO GRAIN MARKET.
WINNIPEG, Oct. 9.—There was a slight reaction in values, due mainly to lack of outside speculative trading. Wheat opened unchanged to ¼¢ lower. Cash demand was fair for all grades, and both exporters and millers were buyers. Export is again hampered by an increase in New York rate of exchange. Foreign news was generally bullish. Inspections Thursday morning 938 cars as against 1068 last year.

Wheat—No. 1 northern, \$1.07½; No. 2 do., \$1.03½; No. 3 do., \$0.98½; No. 4 do., \$0.94½; No. 5 do., \$0.90½. Oats—No. 2, C.W., \$0.60; No. 3 C.W., \$0.56; No. 3 feed, \$0.45½. Barley—No. 3, 60½; No. 4, 60½. Flax—No. 1 N.W.C., \$1.12½; No. 2 C.W., \$1.09½.

MINNEAPOLIS GRAIN MARKET.
MINNEAPOLIS, Oct. 9.—Wheat—No. 1 hard, \$1.10; No. 1 northern, \$1.07 to \$1.08; No. 2 do., \$1.04 to \$1.06½; December, \$1.08. Oats—No. 3 yellow, 67½ to 68½. Oats—No. 2 white, 43½ to 44½. Flour and bran unchanged.

DULUTH GRAIN MARKET.
DULUTH, Oct. 9.—Wheat—No. 1 hard, \$1.08½; No. 1 northern, \$1.05½; No. 2 northern, \$1.05½; December, \$1.05½.

A machine gun corps, using two guns donated by Joseph Boyle, the Vulcan engineer, has started from Dawson City for Victoria to train preparatory to joining the second Canadian contingent.

IF HAIR IS TURNING GRAY, USE SAGE TEA

Here's Grandmother's Recipe to Darken and Beautify Faded Hair.

That beautiful, even shade of dark, glossy hair can only be had by brewing a mixture of Sage Tea and Sulphur. Your hair is your charm. It makes or mars the face. When it fades, turns gray, streaked and looks dry, wispy and scraggly just an application or two of Sage and Sulphur enhances its appearance a hundredfold.

Don't bother to prepare the tonic; you can get from any drug store a 50 cent bottle of "Wyeth's Sage and Sulphur Compound" ready to use. This can always be depended upon to bring back the natural color, thickness and lustre of your hair and remove dandruff, stop scalp itching and falling hair.

Everybody uses "Wyeth's" Sage and Sulphur because it darkens so naturally and evenly that nobody can tell it has been applied. You simply dampen a sponge or soft brush with it and draw this through the hair, taking one small strand at a time; by morning the gray hair has disappeared and after another application it becomes beautifully dark and appears glossy, lustrous and abundant.

FOR SALE

\$2750.—Buys new 1¼ red brick, central, 6 large rooms, electric lights and fixtures, gas, piped for furnace, complete bath, cellar under whole house, verandah, nice lot.

TO RENT—2 storey brick, central, all conveniences, large airy rooms, very reasonable rent, A1 condition.

S. P. Pitcher & Son

Auctioneers and Real Estate Brokers—Sellers of Marriage Licenses.

43 MARKET ST.
Phone: OF. 961, House 889, 513

"Everything in Real Estate"

P. A. SHULTIS & Co., 7 S. Market St.

BARGAINS

\$2250.—Just completed, 1½ storey red brick, stone foundation, 3 bedrooms, 4 closets, 3-piece bath, hall, parlor, dining-room, kitchen, full basement, ready for furnace, gas, electric light, double deck verandah, good lot. Only \$700 cash, balance at 6%.

\$2800.—Beautiful new 2 storey red pressed brick, stone foundation, 3 bedrooms, 3 living rooms, full basement, all conveniences, finished in Georgia pine, verandah and sleeping porch. Only \$800 cash. East Ward.

\$3500.—Choice William St. residence, nearly new and all conveniences. Ask to see this.

FOR RENT—Several good houses. BOTH PHONES—OF. 326, Res. 1913. OPEN: Tues., Thurs., Sat. Evening. Fire Insurance - Marriage Licenses

Special Bargains

All the Real Estate of the late Andrew McMeans, including dwellings, stores and vacant lots. Purchasers are not limited to locations, the properties being situated in all directions from the City Hall. Come and get prices and do best.

JOHN FAIR

Surveyor and Civil Engineer
Solicitor for Patents.
20 MARKET ST. - Phone 1488

For Sale

\$1400.—New red brick cottage, leased for one year at \$11.00 per month. Investment.

\$1500.—New red brick cottage, sewer connection, gas, electric light with fixtures. West Brant.

\$1550.—New storey and a half red brick will take vacant lot as part payment.

See Our List of Farms For Sale or Exchange

L. Braund

136 Dalhousie Street
Phones: Office 1533, Residence 1300
Open Wednesday and Saturday Evenings

Choice Garden Property

9 acres back loam, 2 storey frame house, excellent barn, hen house and other outbuildings, large quantity of fruit, fall kinds. Situated south of Brantford on Mount Pleasant road. Any person desirous of a choice garden property should avail themselves of this opportunity. Price \$4000.

W. ALMAS & SON

Real Estate Agents and Auctioneers
35 and 37 George Street (upstairs)

CARTER & BUCKLEY

REAL ESTATE AND INSURANCE
Add res: 150½ Dalhousie St. Upstairs

Stoves and Pipes

R. Feely
48 Market Street
Call and see the best Little Cook Stove in the world for \$16.50. Also good lines in Heaters for the cold weather.
OPEN EVENINGS

H. B. Beckett

FUNERAL DIRECTOR AND EMBALMER
158 DALHOUSIE ST.
First-class Equipment and Prompt Service at Moderate Prices

We Have Plenty of Coal

Have You?