

TORONTO MARKETS.

Cobalt oxide, black, \$1.50 per lb.
 Cobalt oxide, grey, \$1.65 per lb.
 Cobalt metal, \$2.25 per lb.
 Nickel metal, 45 to 50 cents per lb.
 White arsenic, 17 cents per lb.
 April 24, 1918—(Quotations from Canada Metal Co., Toronto).
 Spelter, 10 cents per lb.
 Lead, 9 cents per lb.
 Antimony, 16 cents per lb.
 Copper, casting, 28 cents per lb.
 Electrolytic, 28½ cents per lb.
 Ingot brass, yellow, 21 cents; red, 26 cents per lb.
 April 24, 1918—(Quotations from Elias Rogers Co., Toronto).
 Coal, anthracite, \$10.00 per ton.
 Coal, bituminous, nominal, \$9.50 per ton.

SILVER PRICES.

April—	New York cents.	London pence.
12	93%	46¼
13	93%	46¼
15	95¼	47
16	95%	47¼
17	95%	47¼
18	95%	47¼
19	96%	47¾
22	99¼	49

NEW YORK MARKETS.

Connellsville Coke—
 Furnace, *6.00.
 Foundry, *7.00.
 Crushed, over 1-inch:
 Beehive, *7.30.
 *Fixed under Lever Act.

Straits Tin, spot, f.o.b. none offering.

Copper—

Prime Lake, 23.50.
 Electrolytic, 23.50.
 Casting, 23.50.
 Lead, Trust price, 7.00.
 Lead, outside, normal, 7.12½.
 Spelter, prompt western shipment, 6.87½.

Antimony—

Chinese and Japanese nominal, 12.25 to 12.50.
 Aluminum—Government price, carload lots, f.o.b. plant:
 98-99% Virgin, 32.10.
 98-99% remelt, 32.10.
 No. 12 Aluminum Co., 32.30.
 No. 12 remelt, 32.30.
 Sheet 18 ga. and heavier base, 40.20.
 Powdered aluminum, 65.00 to 70.00.
 Metallic Magnesium—99% plus \$2.00 to 2.50.
 Nickel—Shot and ingot, 50.00.
 Electrolytic, 55.00.
 Cadmium, nominal, \$1.45—1.50.
 Palladium, \$115.00.
 Quicksilver, nominal, \$120.00—125.00.
 Platinum (pure), \$105.00.
 10 per cent. Iridium, \$113.00.
 Cobalt (metallic), 2.50 to 3.50.

Tungsten—

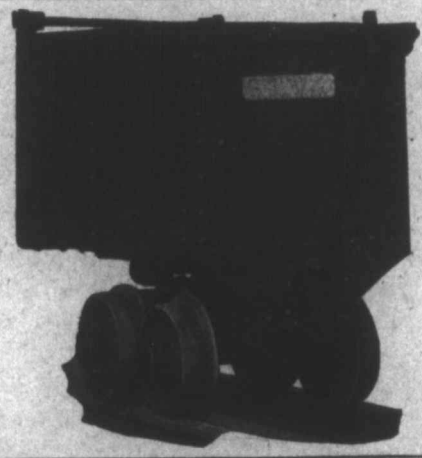
Scheelite, 24.50.
 Wolframite, 20.00 to 24.00.
 Gravel Fluorspar: f.o.b. mines—
 Prompt, 33.00 to 35.00.
 Contract, year 1918, 25.00 to 28.00.
 Silver (official), 99¼.

ROTARY MINE CARS

WILL DUMP EITHER END OR EITHER SIDE

We make these cars to order only, and to suit the customer.
 We make and list two standard types, with a choice of eight sizes and shapes in each type.
 We also make any other style to customer's specifications.
 Prices reasonable; Delivery good.
 Our general catalogue shows many other varieties of mine cars, end dump, side dump, or rotary to dump either way. Let us send you a copy.
 We also make Mine Hoists, steam, electric, or belt drive; Buckets, Skips, Mine Cages, etc.

MARSH ENGINEERING WORKS Limited, Belleville, Ont.
 (Formerly MARSH & HENTHORN, Limited)



MINING AND ROCK DRILL STEELS

HOLLOW AND SOLID

OCTAGON QUARTER OCTAGON HEXAGON CRUCIFORM
 PICK WEDGE HAMMER STEEL

Immediate shipment from Montreal Stock

Kayser, Ellison & Co., Limited
 126 Craig Street West, Montreal
 Ralph B. Norton, Agent

Works, Sheffield, England
 Established 1825