

Stephens Barn and Elevator Paints unequalled for exposed wood or metal

The railways use Stephens Barn and Elevator Paints to protect their bridges and freight cars. The leading milling companies protect their elevators with them. The shrewdest farmers protect their barns and granaries with them.

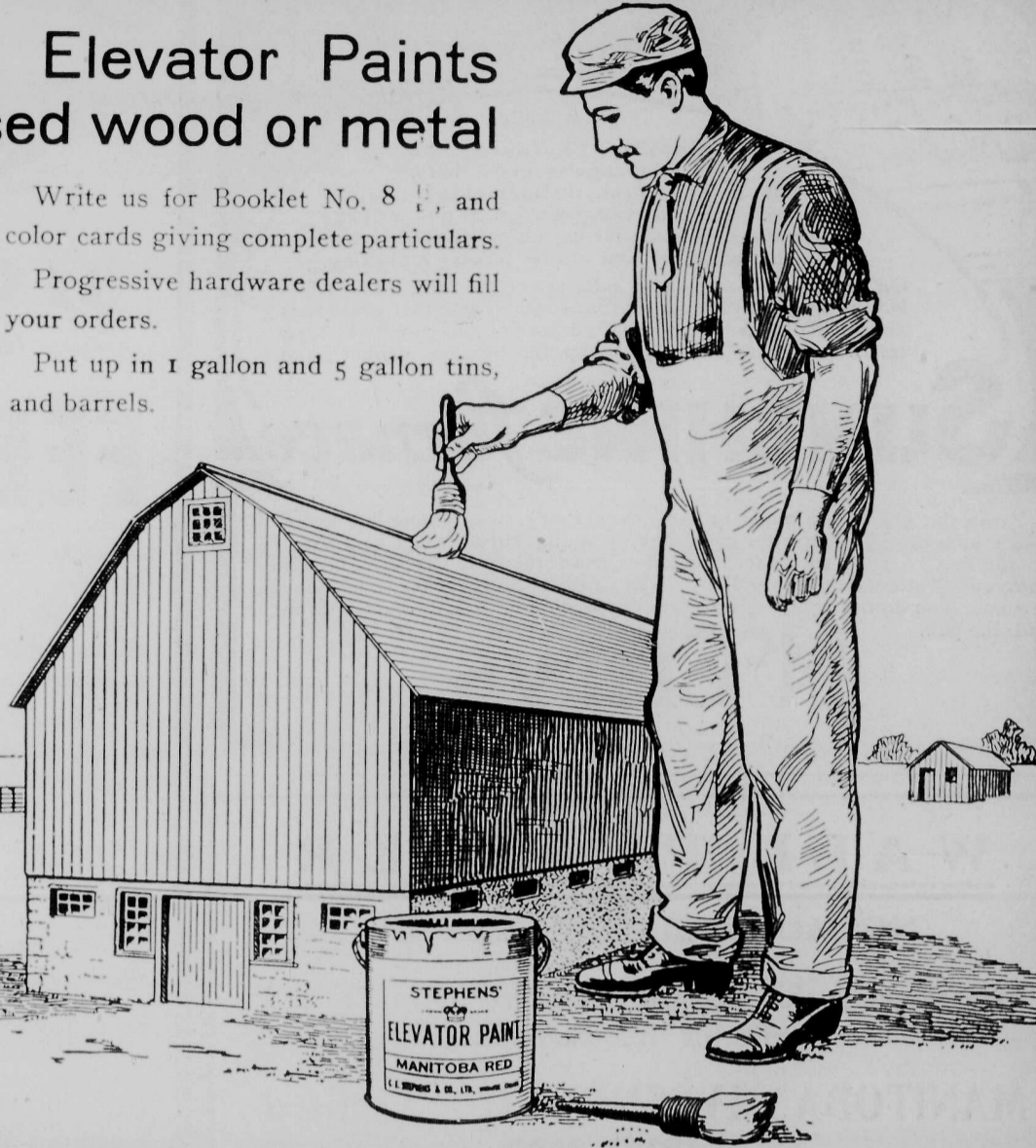
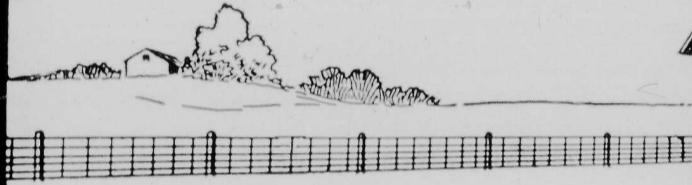
You will find Stephens Barn and Elevator Paints unequalled for preserving exposed wood and metal surfaces against the peculiar Western climate.

The coldest zero weather, the hottest sun, the dampest weather, will not peel, flake, crack or blister Stephens Barn and Elevator Paints.

Write us for Booklet No. 8 ¹/₂, and color cards giving complete particulars.

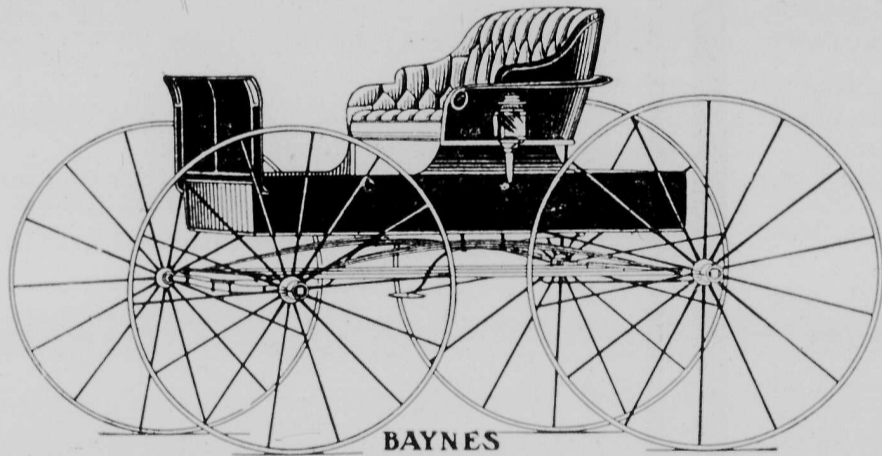
Progressive hardware dealers will fill your orders.

Put up in 1 gallon and 5 gallon tins, and barrels.



Stephens

G. F. STEPHENS & CO., LIMITED,
Paint and Varnish Makers,
Winnipeg, Canada.



Baynes Buggies

For sale by dealers everywhere.
If your dealer has none in stock
write us and we will give you
full information.

THE BAYNES CARRIAGE CO.
HAMILTON, ONTARIO LIMITED

Bear in mind that every vehicle we build is fitted with LONG DISTANCE AXLES that will run ONE YEAR with ONE OILING.

Binds More Sheaves with Less Twine



Plymouth Binder Twine is made right. It works smoothly, ties properly, and the last of the ball feeds as freely as the first. No knots or breaks. Fifty per cent stronger than the strain of any machine actually requires.

PLYMOUTH Binder Twine

is used more than any other twine because it is known to be the best. Made by the oldest cordage establishment in the United States, where quality and honesty are spun into every ball of twine. Farmers who insist on seeing the wheat-sheaf tag on every ball of twine save money and avoid harvest delays. Get Plymouth Twine of the local dealer.

PLYMOUTH CORDAGE COMPANY
Largest Rope Makers in the world—Oldest in America.
Plymouth, Mass.

Mention the Farmer's Advocate