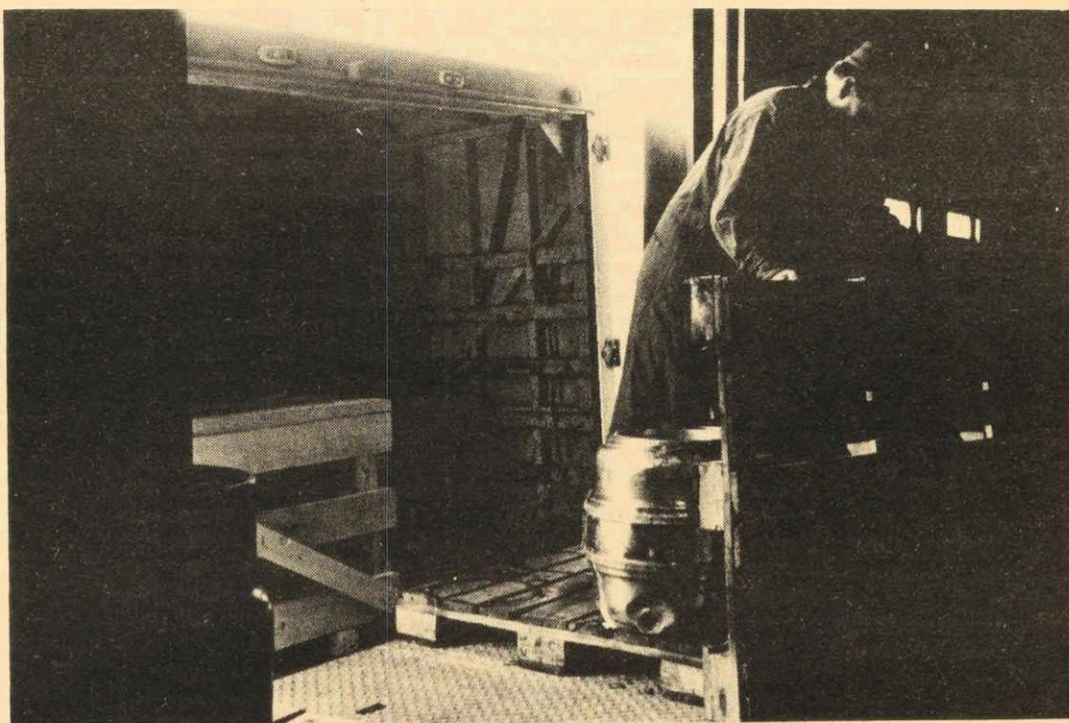


welcomes visitors



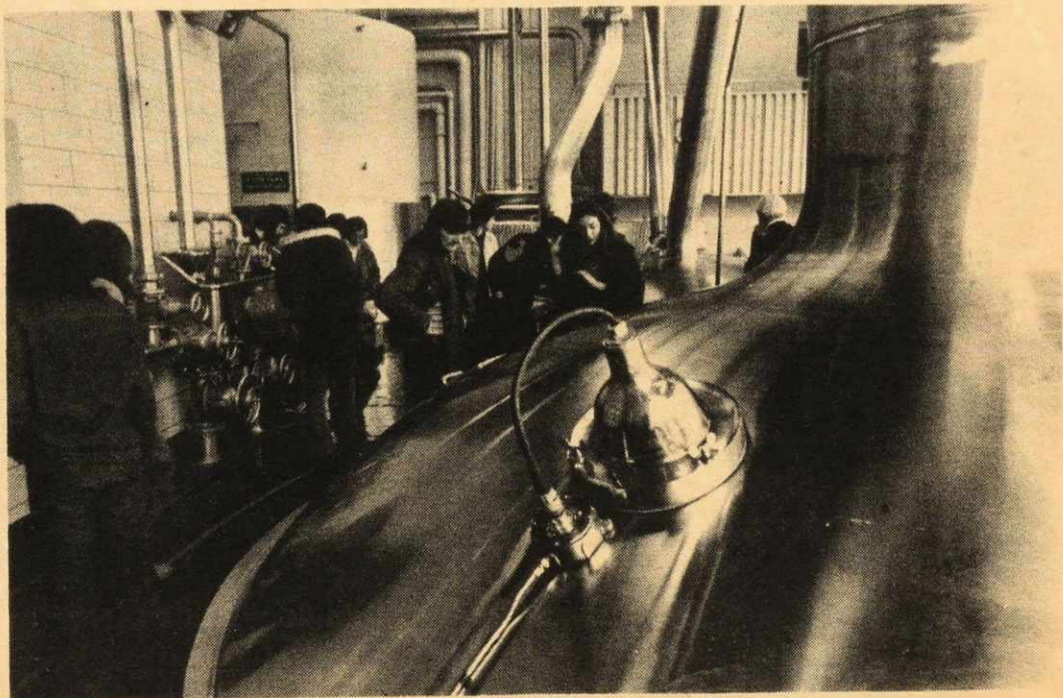
Dal Photo insisted we use this picture.



The company symbol is neither gone nor forgotten in Dartmouth.

There is little or no waste involved in the beer business, and Moosehead wishes there was less. They would save \$100,000.00 a year if all bottles sent out were returned. Each bottle can be used 22 times. The cardboard cartons that bottles are returned in are baled by Moosehead for recycling. The various end products of the process such as the used barley and brewers' yeast are used in agriculture, often for feeding animals. Every effort is made to keep draft beer constantly cold from the time it is made to the moment it is drawn in a tavern. Bottled beer is made to have the longest possible shelf life.

This space
paid for
by
Moosehead
Breweries



The brew kettle is probably the most important piece of equipment in a brewery.