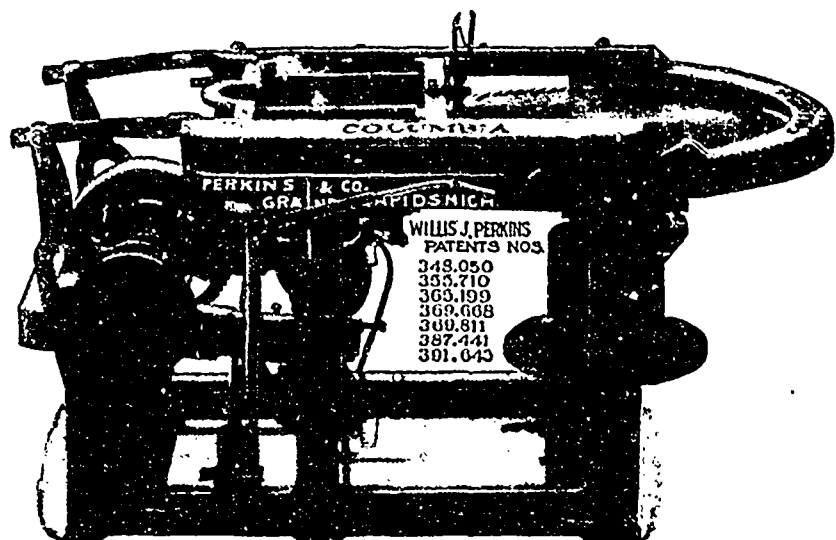


Hand Feed Machine \$150.00 and over.
 Double Blockers - - \$550.00 and over.
 Ten Blockers - - \$1200.00 and over.

—ALSO—

COLUMBIA HEADING AND SHINGLE MACHINES



THEY WERE WELL PLEASED.

PERKINS & CO.

HAMPTON, N. B.

DEAR SIR:—Replying to your favor of 18th inst., Mr. Shives has not called to see the **Columbia** as yet. Our man is feeding her on the fly now; he don't lose a clip. We are very much pleased with the machine.

Yours truly,

THE G. & G. FLEWELLING MANUFACTURING CO.

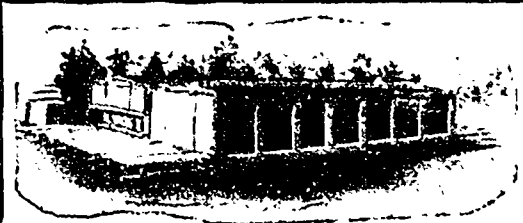
WE ARE LEADERS. WILL INCREASE YOUR CUT AND
 SAVE YOUR MONEY. CATALOGUES ON APPLICATION.

Perkins & Co., Grand Rapids, Mich.



TIME IS MONEY TO THE MAN WHO DRIES LUMBER

COMPARE the SPEED of the
 MORTON DOWN DRAFT
 MOIST AIR DRY KILN
 with that of OTHER SYSTEMS
 IT WILL SURPRISE YOU



Adopted by

The Canadian Pacific Railroad Co., at Montreal and Winnipeg.
 Gold Metal Furniture Co., Toronto, Ont.
 Mason & Risch Piano Co., Toronto, Ont.
 The Brunswick Balke Collender Co., Chicago, Ills.
 The Pullman Co., Pullman, Ills.

A distinctly modern Dry Kiln, produces the
 highest grade finish on the American market.

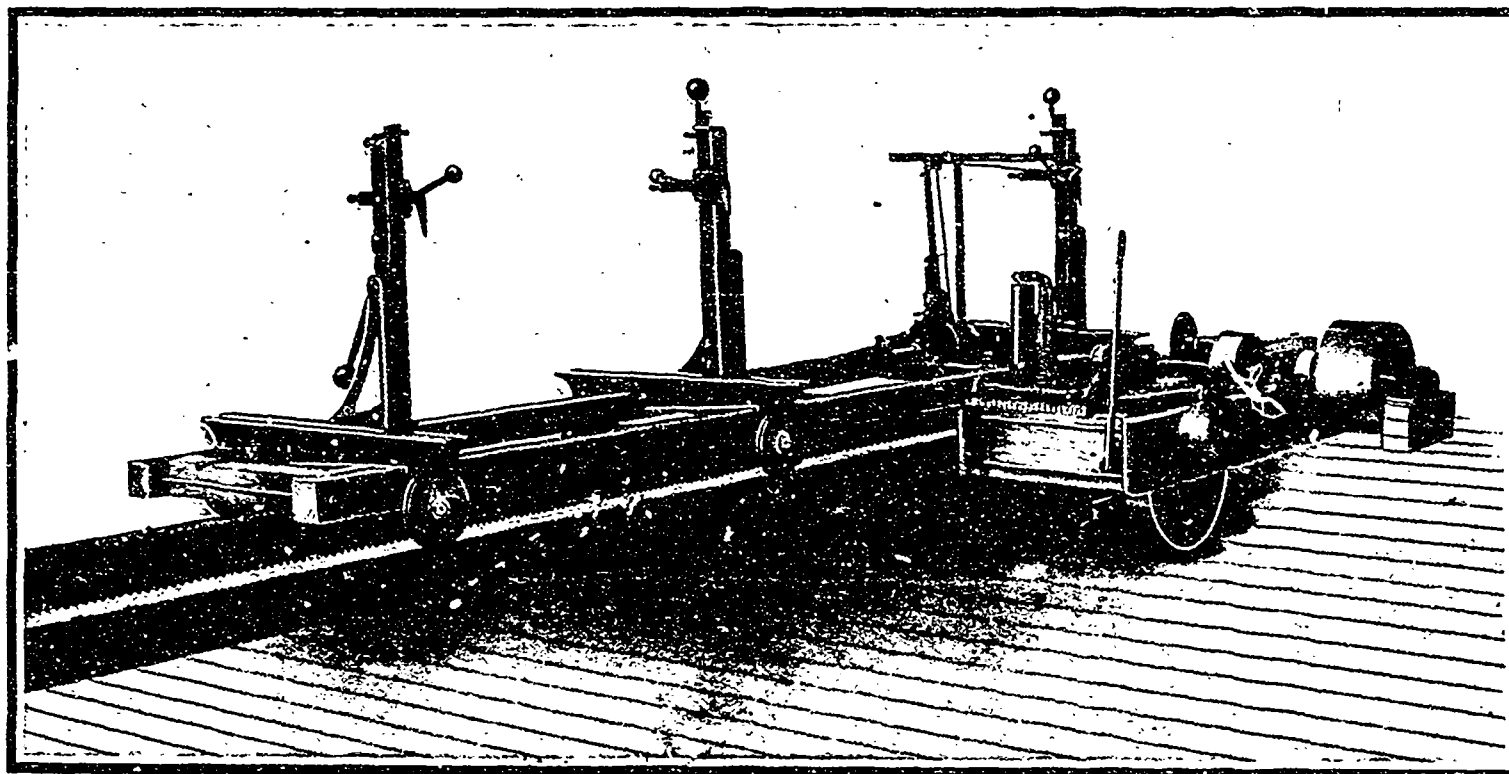
WRITE FOR CATALOGUE.

THE A. H. ANDREWS CO.

174-176 Wabash Ave. - Chicago, Ills., U.S.A.

THE E. LONG MANUFACTURING COMPANY

ORILLIA, ONTARIO, CANADA



The above cut represents our new No. 0 Sawmill, Capacity, 5,000 to 8,000 ft. per day, to carry up to a 56" saw.