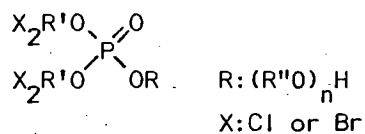
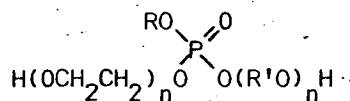


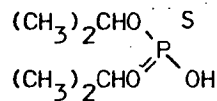
Carbaryl alkyl(C_{1~4}) mixed phosphate



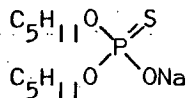
Polyoxyalkylene(C_{2~20})bis[di(chloro- or bromo-) alkyl] phosphate



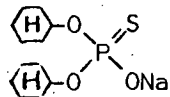
Alkyl(or alkylene)(C_{8~24})polyoxyalkylene polyoxyethylene phosphate



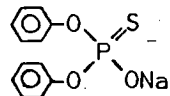
0,0'-Diisopropylthiophosphate



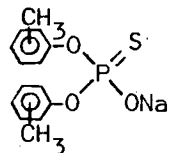
Sodium diamyl(mono)thiophosphate



Sodium dicyclohexylmonothiophosphate



Sodium diphenylmonothiophosphate



Sodium dicresylmonothiophosphate