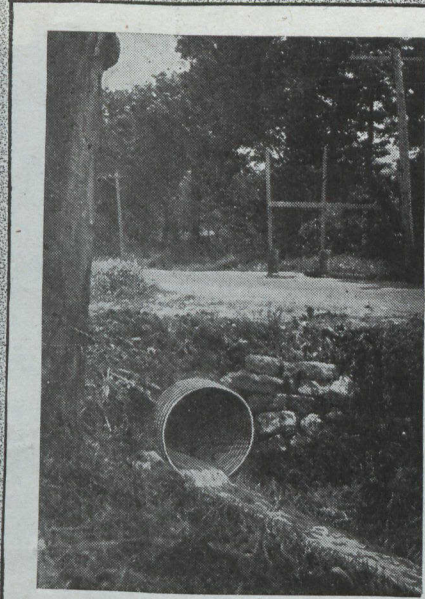


PEDLAR'S "PERFECT" TONCAN METAL CULVERTS

Their Enormous Strength

Laid under fifteen inches or more of solid ground, Pedlar's "Perfect" **TONCAN** Culverts, easily withstand a greater load than the heaviest traffic that passes over them. This is due to a combination of good material and scientific designing. We use in our culverts only the heaviest gauges of the celebrated anti-corrosive Toncan Metal, deeply corrugated. That deep corrugations add tremendously to the strength of a cylinder is one of the most firmly established engineering facts. For greatest strength and durability, always specify Pedlar's "Perfect" Toncan Metal Culverts.

Supplied in lengths up to 40 feet.
Coupling Bands Supplied for longer lengths.



WRITE FOR CULVERT BOOKLET "M J"

THE PEDLAR PEOPLE LIMITED

Established 1861

Executive Offices and Factories: OSHAWA, ONT.

Branches: Montreal, Ottawa, Toronto, London, Winnipeg, Vancouver

ALBERT ST.



1866

The Principal Cities in Canada are using our
**Enamel Steel Street Names
and House Numbers**

THEY LAST A LIFETIME

Made in Canada by

The Thos. Davidson Mfg. Co., Limited

Selling Agents:

J. N. WARMINTON & COMPANY

207 St. James St.—Phone Main 2390—Montreal, Que.

Write for prices and samples

Can a stranger find his way around your City or Town
without difficulty?

Are all Streets named and houses numbered up-to-date?

The Canadian Bridge Co., LIMITED

WALKERVILLE, ONT.

Manufacturers
- - of - - **Railway and Highway Bridges**

Locomotive Turn Tables, Roofs, Steel Buildings and Structural Iron Work
of all descriptions