

of large wing, and may at a later date build another addition for the treatment of contagious diseases.—The plans of Finley & Spence, architects, have been accepted for the new office building to be built on St. James street by the Guardian Fire & Life Assurance Co.; estimated cost \$200,000, to be built of Indiana limestone with basement of grey granite, nine storeys and basement, steel frame construction, steel work protected by terra cotta or concrete, fire-proof vaults in all offices.—Building permits have been granted as follows: Tiffin Estate, alterations to three-storey house, 2365 St. Catherine st., cost \$1,000; Mrs. T. Prefontaine, two-storey house, 36 Laval avenue, cost \$3,800 (J. O. Turgeon, architect, Boucher & Huberdeau, contractor); Gould Cold Storage Co., alterations to one-storey house and two stores, 90-94 Grey Nun street, cost \$2,200; H. Choquette, three four-storey houses, facing on Sherbrooke, Cadieux, and St. Hypolite streets, cost \$23,000; J. T. Ferron, two-storey house, 3 and 5 Massue street, cost \$1,130; R. & W. Kerr, alterations to three-storey house and store, 2227 St. Catherine street, cost \$2,400; Nap. Deslauriers, four-storey house, St. Denis street, cost \$6,000;

E. Choquette, house, Avenue de L'Hotel de Ville, cost \$4,000 (Boucher & Huberdeau, contractors); Mary Clara Holland, two-storey house and store, St. Hubert street, cost \$1,200; Nap. Vallee, three-storey house and store, Segneurs and Payette street, cost \$7,000 (Jos. Sawyer, architect, A. Laberge, contractor); Lake of the Woods Milling Co., two-storey house, St. Denis street, cost \$4,000, (Jas. Shearer & Co., contractors); A. Dupenault, two three storey houses, Crescent street, cost \$23,000, Lyman, Sons & Co., two-storey spice mill, 44 Prince street, cost \$3,800 (McVicar & Heriot, architects, Heggie & Stewart, contractors); Dr. E. E. Laurent, three-storey house, 276 Centre street, cost \$7,000 (Jos. Sawyer, architect, H. Fargue, contractor.)

TORONTO, ONT.—R. J. Edwards, architect, has plans under way for a number of new residences on which tenders will be taken as soon as the labor troubles are settled.—The contracts have not yet been awarded for the Gurney Foundry Co's building at Toronto Junction, A. R. Denison, architect.—The city is asking for tenders up to 20th inst., for annual supply of brick and cement.—The time limit for completing the new

boiler at the main pumping station has been extended for a period of six weeks.—The Board of Management of Knox College have appointed a committee to secure plans for a temporary building to be placed under construction as soon as possible.—The building of a new bridge across Bellwood's Park ravine at Crawford street is under consideration.—The city engineer will recommend the construction of an asphalt pavement on Simcoe street, from King to Esplanade. He has recommended concrete pavements on Centre Island, to cost \$8,744, also the following works: Asphalt pavements, Victoria street, Queen to Gerrard, cost \$21,340, and Bay street, King to Front, cost \$47,430; cedar block pavement on Givens street, Argyie to Halton, cost \$2,186; tar macadam roadways on Howland road, Gerrard to Langley avenue, cost \$45,460; Mackenzie avenue, Dale avenue to Cistle Frank avenue, cost \$4,240; and Dale avenue, Glen road to Mackenzie avenue, cost \$5,840. The city engineer reports that a septic tank system for the east end would cost \$35,000.—C. F. Wagner, architect, wants tenders by 5 p. m. of 17th inst. for removing pavilion at Balmy Beach.—A. W. Holmes, architect, has prepared plans

DEBENTURES

Municipalities contemplating the issue of Debentures will find it to their advantage to communicate with

G. A. STIMSON & CO.

Investment Dealers

24 and 26 King St. W.

TORONTO

JOSSON CEMENT

Manufactured at
NIEL ON RUPELL

Is the Highest Grade Artificial Portland Cement and the Best for High Class Work. Has been used largely for Government and Municipal Works.

TO BE HAD FROM ALL CANADIAN DEALERS

C. I. de Sola, Manager in Canada :: 180 St. James Street, MONTREAL

The Canadian Bridge Co., Limited

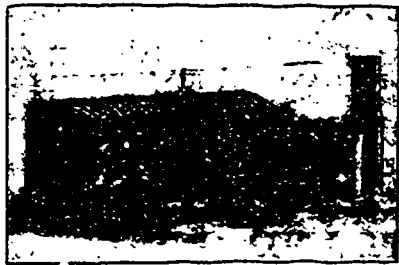
WALKERVILLE, ONT.

MANUFACTURERS OF

RAILWAY AND HIGHWAY BRIDGES

Locomotive Turn Tables,
Roofs, Steel Buildings and
Structural Iron Work of all descriptions.

PERFECTION STEEL-GLAD AND BRICK SET INCINERATORS



MANUFACTURED
BY

Toronto Furnance & Crematory Co., LIMITED

14 and 16 Queen St. East, TORONTO, CANADA.

Experts in sanitary disposal of dangerous wastes,

Garbage, Refuse, Night Soil, Dead Animals,

For Cities, Towns, Hospitals, Hotels, Abattoirs, etc.

The plants embody the newest features of modern practice and are constructed to meet the requirements of the smallest towns and the largest cities, capacities ranging from 4 to 100 tons daily. Correspondence invited.

RAILS FOR SALE

BEST ENGLISH MAKE—VERY LITTLE USED.

200 tons 56 lbs. Steel Relaying rails } Including Plates
2300 " 60 " " " " } and New Bolts.

SUBJECT TO INSPECTION. DELIVERY F.O.B. MONTREAL.

ASK FOR SAMPLE SECTION OF RAILS.

L. H. GAUDRY, 101 St. John St., Quebec