

These Belts Do Not Slip,

BECAUSE THEY ARE FULL
OF

CLING-SURFACE.

COMPARE THE TWO SIDES OF THESE BELTS: ABSOLUTELY NO INITIAL TENSION ON EITHER SIDE. THE STRAIN BELOW IS A WORKING TENSION ONLY, WHICH IS WHOLLY RELIEVED IN THE SLACK, ALLOWING THE BELT TO RECOVER ITSELF AND RETAIN ITS ELASTICITY.

CONSEQUENTLY NO SLIPPING IS POSSIBLE.

POWER AND THE LIFE OF THE BELT ARE INCREASED. ATTENTION IS DECREASED TO A MINIMUM.

THESE ARE ONLY THREE OF OVER 200,000 SUCH BELTS FULL OF **CLING-SURFACE**.

CLING-SURFACE IS NOT A STICKY BELT DRESSING.

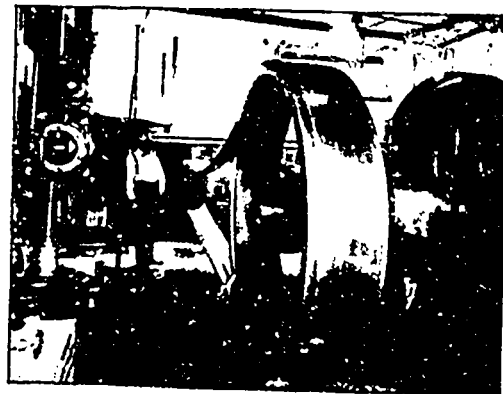
WE WILL BE GLAD TO TELL YOU MORE ABOUT IT.

CLING-SURFACE MANUFACTURING CO.

120-126 VIRGINIA STREET,
BUFFALO, N.Y.

NEW ENGLAND AND E. CANADA BRANCH
170 SUMMER STREET, BOSTON.

CHICAGO BRANCH, 225 DEARBORN ST.



BROWN, DURRELL & CO.
C. F. CHASE, Mgr. for N.E. & E. CAN.
CLING-SURFACE MFG. CO.
SIR—Having tried Cling-Surface on my 12' dynamo belt (16 feet between centres) I have been able to carry full load with 22" sag on belt with no perceptible slip. It surpasses my expectations, and I can recommend it to do all that is claimed for it, if directions are followed.
Yours respectfully,
E. B. PRESCOTT, Engineer.

