

power for such mines as require it. Saw Mill Creek is one of the beauty spots of Fairview, and lies on the east side of the valley, about five miles away. It rises on Mt. Baldy, and comes over rock and cliff, through gorges and canyons, in foaming cascades and roaring waterfalls, grand, beautiful and awe-inspiring, and yet its majesty will be controlled, and its furious power converted into a more ductile form, and carried away on wires, to bring light, luxury and ease to the householders of Fairview and the toilers in her mines.

(To be continued.)

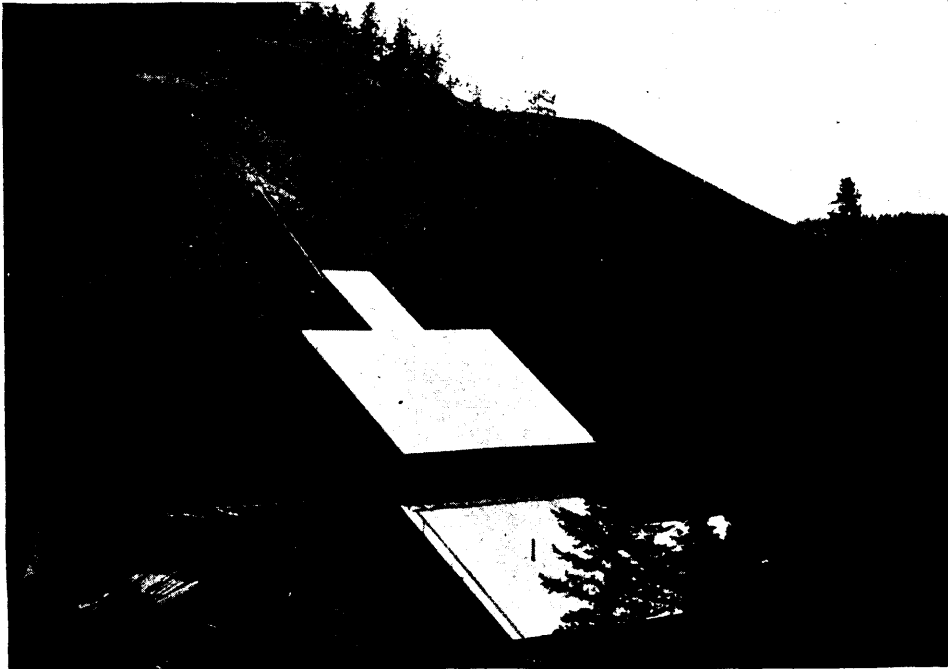
stock Mountain rises to an altitude of about 2,500 feet, and down this mountain Canyon Creek, a considerable stream, flows into the Sound. Upon either side of this creek are located the different properties comprised in the new Quatsino Mining District, now numbering perhaps forty claims. The first of these locations were made early in the summer of 1897, and were recorded at Nanaimo, which is at present the nearest Recorder's Office.

TOPOGRAPHY OF THE DISTRICT.

The mountains rise more or less abruptly from the waters of the Sound, and their sides are covered by a dense growth of valuable fir, spruce, hemlock, red and yellow cedar, and other timber, the surface being covered by decayed vegetation, moss and undergrowth, which renders prospecting difficult. Upon the higher altitudes only, does snow fall and lie during the winter. The rainfall during the winter season, in common with the rest of the coast, is rather heavy, though not as excessive as further up the coast, in Alaska.

COMSTOCK MOUNTAIN.

Nearly all the locations made in the dis-

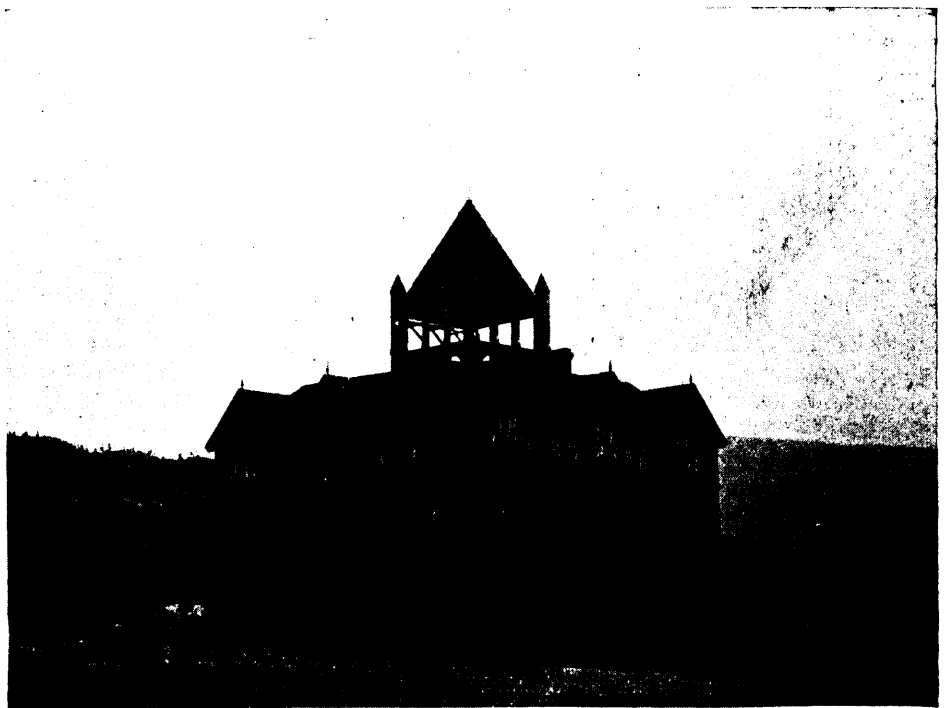


THE TIN HORN STAMP MILL

THE QUATSINO MINING DISTRICT.

QUATSINO Arm is situated about 250 miles northwest of Victoria, near the upper end of Vancouver Island, extending to the east about twenty-two miles, where it forks, forming three arms, known respectively as the West Arm, Rupert Arm, and the Southeast Arm. The Sound proper and its different arms, vary from one-half to three miles in width, forming, with perhaps the exception of Puget Sound, the most commodious, the safest, and the most magnificent natural harbour on the North Pacific Coast.

Upon the west shore of the Southeast Arm, and about three miles from the forks, Com-



THE NEW HOTEL AT FAIRVIEW.