

PROTECT YOUR CAR ON STREET

Removal of Small Part Makes Auto Secure Against Thieves

PRECAUTION NEEDED
Owners Should Realize Necessity of Guarding Their Automobiles

Thieves are riding better every day, and unless your automobile is properly guarded at all times there is no telling when they will get yours. A car properly locked up or left with a responsible garage keeper is reasonably safe. The real danger comes from leaving the car unattended in the street. Many a man has left his machine with hardly a thought as to its safety and never has seen it again. It is useless to lock the stable door after the horse is stolen, yet some owners will never protect their cars properly until they have lost one.

The motoring public, however, is gradually awakening to this danger, and so a few suggestions will be of interest. First, the owner must be impressed with the necessity for taking some such precaution, as he will not make the effort unless he realizes the need of it.

Many ignition systems have locks on them, and the owner carefully locks the switch and removes the key, ignorant of the fact that a good blow from a hammer will break the lock. Some devices are for sale. Those provided with a good arrangement of tumblers are not open to this objection. But it is easy enough to raise the hood of the engine and remove the wires leading to the lock. This is not so difficult a trick as one might imagine. A man leaves his automobile at the curb near a restaurant while he and his friends go inside. It is evident they intend to stay inside from fifteen minutes to an hour or more. A thief walks out of the same restaurant, goes up to the car in a businesslike manner, raises the hood, fixes a couple of wires with a pair of pliers, starts the motor and drives off. Even a policeman watching him would suspect nothing. Yet the thief has made a clean getaway with an expensive car and left no clue.

The best safeguard is to remove some important part of the ignition system or to disconnect the wires in some place that is not easily accessible. For instance, removing the distributor brush is one of the best. If the car is equipped with a magnet the collector-ring brush and the



SHE KNEW IT

THE SUB: "I paid a guinea to a palmist yesterday, and she described you exactly and said we should be married within a month."
THE GIRL: "How extravagant you are—I could have told you that for nothing."
—London Opinion.

rod connecting it to the distributor should be removed. Any one of these will make a gap in the circuit which is not easily bridged, as the thieves have not yet acquired the habit of carrying these parts with them. Another way is to use a special switch controlling the starter current. Have it concealed under the cowl dash, where no one would expect such a thing to be placed. Use one capable of carrying 100 amperes and run your starter wires to it. With the safety switch open and the starting handle locked in the tool box the thief will not experiment very long.

Another safeguard that employs none of the above methods is to lock the gasoline valve in the closed position. This requires a special lock, but is a sure preventive. So protect the car when it is out of your sight. Do not think that it may never be stolen because it never has been. It may be your turn next.

Children Cry FOR FLETCHER'S CASTORIA

MOTOR CAR TAKES PLACE OF HORSE BEFORE PLOW

Massachusetts Gardener Uses Dodge Brothers Touring Car to Increase Acreage and Double Plowing Capacity

Capacity.
Patriotic citizens who are planning to plant and take care of vegetable gardens this summer are facing the acute problem of being unable to have their ground plowed, on account of the shortage of experienced

farm labor and of horses. The great difficulty has been in obtaining horses, the purchases of the Allies having reduced America's surplus to a deficit and the average horse owner being unwilling to work his horses in the evening.

A. H. Long, an experienced truck gardener of Belmont, Mass., solved the labor and horse problem in a unique and simple manner. He hitched his plow to his Dodge Brothers Motor Car, wrapping the springs with burlap and equipping the rear wheels with tire chains to insure traction in soft earth. With a friend at the wheel, Mr. Long turned over approximately 2 1/2 acres the first day, while his average with a team has been less than half as great. A gang plow used in the same manner would have enabled him to prepare practically five acres a day.

A speed of six miles an hour was used in the experiment, and although twelve miles an hour was maintained for some time, the possibility of danger due to the presence of stones in the soil is responsible for Mr. Long's opinion that the former speed is best suited for breaking up turf.

RAILWAYMEN STRIKE

By Courier Lensed Wire.
Kansas City, Mo., Aug. 10.—With more than 2,000 traction employees idle and all lines within the city inoperative, the status of the strike began Wednesday by employees of the Kansas City railway company, remained unchanged to-day. The men demand the right to organize and reinstatement of discharged employees. The strikers reiterated their confidence in ultimately gaining satisfactory settlement, while company officials continued to refuse any concession to the men. In the meantime the public walked or took passage on innumerable automobiles, hastily converted trucks and other conveyances which swarmed the streets.

Mayor George Edwards announced that unless some action were taken to-day looking toward a settlement of the differences "drastic action" might be expected by the city.

THE LAKE OF BAYS.

There never was a region better designed for vacation purposes than the "Lake of Bays." The whole territory is one great mass of lakes, streams and forests. The lakes are a veritable maze, the haunt of novel hunters and swimmers, and against the steep woodlands nestle charming hotels and summer villas. One thousand feet above sea level with the health giving pine breezes assures one of the purest air. Handsomely illustrated descriptive literature sent free on application to C. E. Horning, District Passenger Agent, Grand Trunk Railway Station, Union Station, Toronto.

BUY YOUR NEW McLAUGHLIN NOW

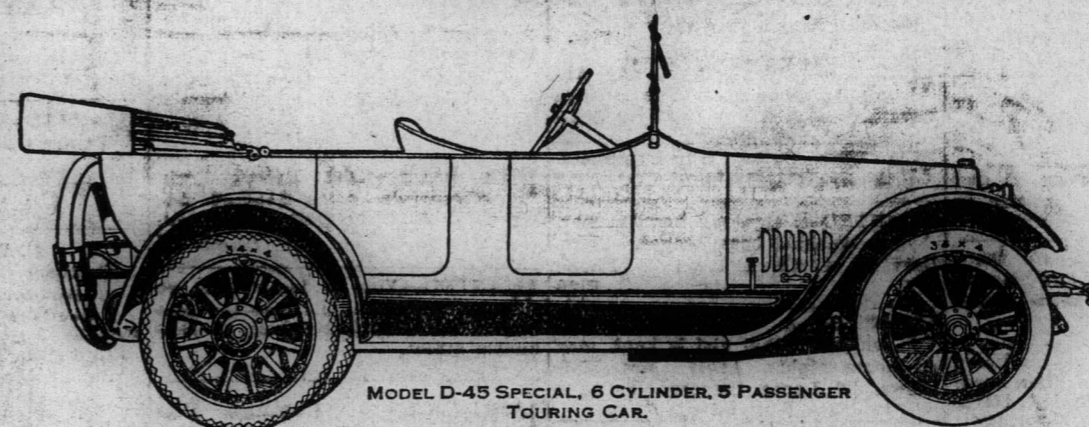
FOR three successive seasons we have been unable to fill the demand for McLaughlin cars in spite of greatly increased production.

Men who can judge motor car values buy the McLaughlin because of the efficiency of the McLaughlin valve-in-head motor; the graceful body lines of our models; the comfort, beauty, finish and superb appointments and the service the McLaughlin organization gives to McLaughlin owners from coast to coast.

Go to the nearest McLaughlin show-rooms and see McLaughlin cars before they are sold.

Our new catalogue illustrate fours and sixes in Roadster and 5 and 7 passenger touring types. Send for a free copy.

The McLAUGHLIN MOTOR CAR CO., Limited, OSHAWA, ONTARIO.



MODEL D-45 SPECIAL, 6 CYLINDER, 5 PASSENGER TOURING CAR.

The McLaughlin Series include 6 and 4 cylinder cars in Touring, Roadster and Sedan types, ranging in price from \$895. to \$2350.

SOLD LOCALLY BY J. H. MINSHALL,

McLaughlin Garage Phone 2168 15 Dalhousie St.

Canada's Standard Car

DODGE BROTHERS MOTOR CAR

A standard which was naturally high, has been made higher still, by the bestowal of complete confidence on the part of the public.

It is mutual contract which offers constant inspiration to the manufacturer and constant insurance to the customer.

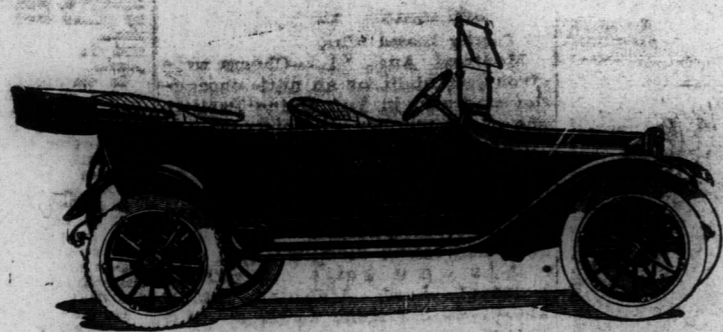
With the interests of buyer and seller so closely knit together, the result, everywhere, is what might have been expected.

It is impossible, for Dodge Brothers, with all their great facilities, to build enough motor cars to satisfy the public.

It will pay you to visit us and examine this car.

The gasoline consumption is unusually low.
The tire mileage is unusually high.

Touring Car or Roadster, \$1185. Sedan or Coupe \$1800
(Freight add Detroit)



BRANT MOTOR CO.

49-51 DALHOUSIE STREET.

BELL PHONE 370, 515, 2253. AUTO PHONE 270

MILUKOFF CHALLENGED

Perogral, Aug. 10.—M. Tchernoff, minister of agriculture, has challenged Professor Milukoff, former foreign minister and editor of The Reich, to appear before the Arbitration court in connection with his comments in that newspaper regarding the charges against M. Tchernoff. The Reich has been prominent in arranging M. Tchernoff, Professor Milukoff has accepted the challenge and nominated legal representatives.

It was recently charged that M. Tchernoff had been connected with the German general staff. This led to his resignation as minister and finally in the resignation of the cabinet. M. Tchernoff successfully defended himself against the accusations and again became a member of the re-organized ministry.

DIRECTOR RESIGNS.

London, Aug. 10.—The newspapers say that Col. Sir Nivelle Chamberlain, inspector-general of the Royal Irish Constabulary, has resigned the directorship of the national service to which he was appointed last December, as a result of the re-organization of the department. It is reported he disapproved of some of the changes in connection with the re-organization.

Hutton's Motor Transfer
Carting and Baggage

We can assure you of Prompt Service
Maloney's Tax Cabs
PHONE 730

USE Maloney's Tax Cabs
PHONE 730

TAXI CABS
MITCHELL'S
PHONE 632

FOR TAXI CABS and Touring Cars For City and Country

HUNT & COLTER
155 DALHOUSIE STREET
Bell Phones—45, 49. Machine—45 "We meet all Trains"

COAL CEMENT
JOHN MANN & SONS
LIME BRICK
323 Colborne Street
BELL 90 MACHINE 46