

Financial, Commercial and Real Estate

Either Phone: 351

THIS WEEK

Goods Specials

- and Suitings in medium and dark wide, good weight; suitable for coats, or Separate
- 75c
- and cloth Duchess cloth in Wine, 50 inches wide; regular
- 75c
- and serges 80 inches wide in Navy, khaki, Green and Wine.
- 59c
- and French Coating
- \$1.25
- and special
- \$1.25

and shades of Brown: elegant
75c
and perfect for coats, etc. Regular
\$1.50

Tailored Waists

- and waists, embroidered fronts,
- and Sizes, 34 to 45.
- \$1.00
- and waists made good quality Messian, Navy, Tan, Brown
- \$3.50
- and special
- 79c

Annual Blanket Sale!

ery Specials

- and Llama hose; fine
- \$1.00
- and THREE PAIR FOR
- 23c
- and hose for school wear.
- 25c

& CO.

TING ngalgiS

and record of perfect satisfaction,
and be called a base heater.
and that is hot when in use, also takes
and rating it. If you have never
and tried its base heating
and it is users of this perfect and
and without oven, in many styles

and k at the BIG STORE ON

and tcliffe, Limited
and Merchants

and White
and and Fancy
and Vests

and We know they are worn by
and neat, fastidious dressers,
and that is why we take pos-
and sible pains with them.

and What you do right
and Just phone 274, we'll call
and and deliver. The promptness
and and thoroughness of
and our service will meet your
and approval.

and Why you call up now and
and say when we shall send for
and your laundry?

and "WE KNOW HOW"

and BRANTFORD
and LAUNDRY
and Limited

IMPERIAL BANK OF CANADA

Capital Authorized \$10,000,000
Capital Paid Up 6,925,000.00
Reserve and Undivided Profits 8,100,000.00

Savings Bank Department

Interest Paid on Deposits
From Date of Deposit
Open Saturday Evenings from 7 to 9
BRANTFORD BRANCH: 12 Market Street, Opposite Market Square
HARVEY T. WATT, Manager.

A Legal Depository for Trust Funds

Under the laws of the province of Ontario this
Company is a Legal Depository for Trust Funds.

RATES OF INTEREST

- 3% on Daily Balances.
- 4% on Deposit Receipts for Six Months.
- 4 1/2% on Two Year Debentures.
- 5% on Five Year Debentures.

ROYAL LOAN and SAVINGS COMPANY

W. G. HELLIKER, MANAGER

An Executor's Qualifications

It is imperative that the executor of your will shall be financially responsible, capable of transacting business details involved, and that his services shall be available just when required. A reliable trust company is admittedly the best executor. Correspondence invited.

The TRUSTS and GUARANTEE Company, Limited
43-45 King Street West - Toronto
James J. Warren, President E. B. Stockdale, General Manager
Brantford Branch, 121 Colborne Street
T. H. MILLER, Manager.



Have YOU Any Customers Friends Relatives or Business Acquaintances Then Use the Automatic Telephone
Mr. Vernon Fairfield Cathart Harley Harrisburg Lynden St. George Scotland Burford Brantford
WE DO NOT CHARGE OUR CUSTOMERS for connections with any of the places mentioned in this ad.

Department of Railways and Canals, Canada
SEALD TENDERS addressed to the undersigned and endorsed "Tender for Oct. 1913." Contract No. 3. Halifax Ocean Terminal, will be received at this office until twelve o'clock noon Wednesday, the twenty-second day of Oct., 1913, for the construction of about 2500 lineal feet of quay wall, foundations for buildings, sewers, dredging of harbor to a depth of 40 feet at low water and filling reclaimed areas. Plans and specifications and form of tender may be seen and full information obtained at the office of the General Manager, Moncton, N.B., at the office of the Chief Engineer of the Department of Railways and Canals, Ottawa, and at the office of the Superintendent Engineer, Halifax, N.S. The right is reserved to reject any or all tenders. By order, L. E. JONES, Assistant Deputy Minister and Secretary, Department of Railways and Canals, Ottawa, Sept. 2nd, 1913.

MARKET REPORTS

CHICAGO, Oct. 7.—Improved demand for hard winter grades for export and milling had much influence today in rallying the wheat market. Closing prices were firm, 8-8c to 4c above last night. Corn finished 1/2c to 3/4c up, and oats with a gain of 1-8c to 3/4c, but provisions 12c to 27 1/2c down.

TORONTO GRAIN MARKET. Wheat, all bushels, 80 to 80 1/2
Barley, bushels, 60 to 60 1/2
Peas, bushels, 1.00
Oats, bushels, 0.85
Rye, bushels, 0.85
Buckwheat, bushels, 0.51 1/2

TORONTO DAIRY MARKET. Butter, creamery, 28 to 28 1/2
Butter, separator, 25 to 25 1/2
Butter, creamery, solids, 0.22 to 0.23
Butter, strew lots, 0.22 to 0.23
Cheese, old, lb., 1.15 to 1.16 1/2
Cheese, new, lb., 1.14 to 1.14 1/2
Eggs, fresh, dozen, 1.00 to 1.11
Honey, extracted, lb., 0.10 to 0.11
Honey, comb, dozen, 2.50 to 3.00

WINNIPEG GRAIN MARKET. WHEAT, Oct. 7.—All markets opened higher, milling on improved export demand, bids being fairly numerous from Montana, Buffalo and New York. The close showed an advance of 1/2 to 3/4c. Cash wheat closed 1/2c higher on all grades, corn oats were 1/2c up and cash flax 1/2c up. Flax options were 1/2 to 3/4c higher. Corn was 1/2c up.

MINNEAPOLIS GRAIN MARKET. MINNEAPOLIS, Oct. 7.—Close—Wheat—Dec. 84c, May, 89c; No. 1 hard, 88c; No. 2, 87c; No. 3, 86c; No. 4, 85c; No. 1 northern, 82c to 85c; No. 2 do, 81c to 83c; No. 3 do, 77c to 81c; No. 4 do, 75c to 77c. Corn—No. 3 yellow, 67 1/2c to 68c. Oats—No. 3 white, 37 to 37 1/2c. Flour—Unchanged.

DULUTH GRAIN MARKET. DULUTH, Oct. 7.—Close—Wheat—No. 1 hard, 84c; No. 2, 83c; No. 3, 82c; No. 4, 81c; No. 1 northern, 78c to 81c; No. 2 do, 77c to 79c; No. 3 do, 73c to 75c. Corn—No. 3 yellow, 67 1/2c to 68c. Oats—No. 3 white, 37 to 37 1/2c. Flour—Unchanged.

CATTLE MARKETS. UNION STOCK YARDS. TORONTO, Oct. 7.—Receipts for the week at the Union Yards were 73 head of cattle, 600 hogs, 400 sheep and 122 calves.

EAST BUFFALO LIVE STOCK. EAST BUFFALO, Oct. 7.—Cattle—Receipts, 2500; active and steady. Veals—Receipts, 175; active and steady. Native calves, 10 to 12; Canada calves, 14.50 to 15. Hogs—Receipts, 4000; slow and steady. Light, 10.50 to 12; mixed, 8.75 to 11.50; heavy, 7.50 to 10; yorkers, 8.75 to 10.50. Light, 10.50 to 12; mixed, 8.75 to 11.50; stage, 8.50 to 10.50; dairies, 8.50 to 10.50. Sheep and lambs—Receipts, 1000; active; sheep, steady; lambs, 10c higher; lambs, 35.50 to 37.50.

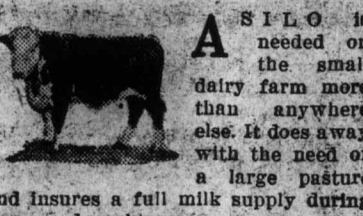
CHICAGO LIVE STOCK. CHICAGO, Oct. 7.—Cattle—Receipts, 5500; market, steady; steers, 27.20 to 29.50; Texas steers, 27.00 to 28; stockers and feeders, 25.45 to 27.50; cows and heifers, 23.50 to 25.50; calves, 27.50 to 33.50. Hogs—Receipts, 2500; market, steady; light, 18.00 to 19.75; mixed, 17.25 to 18.75; heavy, 17.50 to 19.50; rough, 17.00 to 18.50. Sheep and lambs—Receipts, 4000; market, steady; sheep, 12.00 to 14.00; lambs, 16.00 to 17.00.

TORONTO SALES. Barcelona 25 @ 32.
Spanish River 135 @ 14 1/4 to 15 1/4.
R. & O. Nav 55 @ 109 1/2 to 3-4.
Twine City 15 @ 105 7-8.
Toronto Rails 340 @ 141 1/4 to 1-2.
Maple Leaf pid. 10 @ 92 to 1-4.
MacDonald 150 @ 19 1/2 to 5-8.
Cons. Gas 9 @ 180.
F. N. Burr pid. 15 @ 94.
Brazilian 1505 @ 88 1/2 to 89 3-8.
Steel of Can. 25 @ 19 1/2.
Imperial 18 @ 214.
Huron and E. 10 @ 211.
Can. Perm. 26 @ 182 1/2.
Toronto Gen. Trusts 40 @ 185.
Canners 25 @ 69.
Conias 100 @ 756.
Porto Rico 20 @ 61.
MacKay 25 @ 80.
15 shares miscellaneous.

A VEGETABLE CONSTIPATION CURE. Because they contain mercury and mineral salts, many pills are harsh. The easiest and safest laxative is Dr. Hamilton's Pills of Mandrake and Butternut. They clean the stomach, intestines and bowels—drive out waste matter, tone the kidneys and forever cure constipation. As a general tonic and system cleanser nothing is so mild and efficient as Dr. Hamilton's Pills of Mandrake and Butternut. Sold everywhere in 50c boxes.

Making the Little Farm Pay

By C. C. BOWSFIELD



A S I L O is needed on the small dairy farm more than anywhere else. It does away with the need of a large pasture and insures a full milk supply during summer droughts.

Fodder preserved in a concrete silo is safe from fire and retains the maximum food value. The cost of building a silo with a capacity of 150 tons need not exceed \$300. It varies according to the supply of labor. Concrete costs little more than wood and is so much better in every way that it is unconditionally recommended. No fodder is relished so much by stock as silage. Its influence is beneficial to the animal system, is invigorating and prevents ailments and impaction. Succulent silage makes for good health and heavy milk flow. It is equally good for poultry and hogs.

Corn is the most suitable of all crops for silage. It should be harvested when the bottom leaves are drying off and the grain is doughy and glazing. Without hurrying the work of filling the silo, the best method is to handle the crop as soon as it is harvested, cutting the stalks and cobs into small bits. The grain is more or less mace erated in the cutter.

The fodder thus treated is carried by means of an elevator or blower, which should deliver the material as near the center of the silo as possible. This may be done by the aid of a bag chute attached to the mouth of the elevator or the blower.

The labor of distributing the fodder is thus minimized, and an even supply of the material will be distributed all over the silo. If the fodder be allowed to fall direct from the mouth of the conveyor the heaviest parts will fall on one side and the lighter parts on the other. The silage will not settle evenly, and loss will eventually occur. To assist in close packing it is absolutely essential to trample the product all over the silo. Trampling the sides or around the edges is not sufficient, for when the striking of the center the outer edges creep toward it and away from the walls, thus allowing access of air and consequent loss. The center should always be kept a little higher than the outer edges. The rate of filling should be about eight feet per day. Quicker filling than this may result in generating too much heat, in which case the silage is liable to decompose.

After the silo has been filled the fodder should be covered with a light framework or frame sheet and weighted down. This is done to keep out air, and after the silo has been opened for use in the spring or summer it is best to replace this top covering after each day's supply is taken out. Avoid, in this manner, silking holes in the silage. In fact, keep as little of the silage exposed to the air as possible.

The daily ration of silage for a dairy cow is from thirty to forty pounds when fed with other fodders; when there is some grass available thirty pounds per day is ample. Sheep will eat as much as three pounds a day. It is advisable to give horses small quantities only of silage; otherwise there may be trouble from stomach fermentations. Limit the amount fed to a few pounds per day. Pigs and poultry will eat small quantities.

Silage may be made of all plants that animals are permitted to eat in the green state, and such fodder preserved by this means loses but little of its feeding properties in the process. In one way there is a slight improvement. That is, the tougher fiber of siloed fodder is softened and made thereby more digestible and acceptable to animals.

Village Property

We have received instructions to sell a very desirable property situated in the Village of Newport, consisting of 7.3-4 acres. This property is situated 1-2 miles from market, and is convenient to schools and churches. There is an orchard of 2 1/2 acres, consisting of 150 apples, pears, plums, cherries, small fruits; also large vineyard. Buildings consist of good 1-1/2 storey frame house with good well and cistern; frame stable with 4 stalls; drive house and shed. Price: \$2800

Terms—Half Cash

New Up-to-Date House

Situate in the East Ward, 1-3-4 storey brick, containing parlor, dining room, kitchen, 3 bedrooms with clothes closets, Buck's Reliance furnace, complete bathroom with hot water boiler and soft water connections; basement full size of house; electric wiring and gas piping. Beautiful gas grate in dining room. Woodwork very nicely finished. This house is well situated. Possession at once. Price: \$2800

S. G. Read & Son, Limited
129 Colborne Street, Brantford

For Sale

SHERIDAN STREET—New two storey red clay brick dwelling, completed in every partition and on splendid lot in fast improving section.

ARTHUR STREET—Very fine residence with best plumbing and hot water heating. This is very complete and the neighborhood is first class.

MURRAY STREET—Only two fine lots left out of block.

ARTHUR O. SECORD
Real Estate, Fire, Accident and Life Insurance
ROOM 8, TEMPLE BLDG.

OPEN TUESDAY, THURSDAY, AND SATURDAY EVENINGS.
Phones—Bell 1750, Aut. 175. House—Both Phones 237.

For Sale!

\$2,300—New red brick, 2 story and three-quarters, containing parlor, dining room, kitchen, hall way, 3 bedrooms, clothes closets, complete bath, electric lights and gas; cellar the full size of house, with outside entrance. \$500 cash and balance at 6 per cent.

\$1,550—New red brick cottage, Terrace Hill, close to factories, containing parlor, dining room, kitchen, 3 bedrooms, 3 clothes closets, pantry, sink, gas, three apartment cellar with inside and outside cellar entrance.

\$1,350—East Ward, good cottage, six rooms, gas, city water, sewer connection; first class location.

TO LET—\$13.00 per month, good six roomed cottage, gas and electric lights.

W. E. DAY
232 Colborne St.
Real Estate, Fire, Accident and Health Insurance. Both Phones

For Sale

Five building lots, the best in East Ward, corner of Arthur and Murray streets. Will sell frontage to suit purchaser. Enquire price. No. 491 F.E.

\$2,800—Buys red brick house on St. Paul's avenue, with three extra lots; house contains three living rooms, 3 bedrooms, bath, room, city and soft water in sink; electric light and gas. Terms, \$200 down, \$100 per year; interest at 6 p.c. No. 492 F.E.

\$2,500—For 50 acres with buildings, 6 miles from Woodstock. Would exchange for city property. No. 89 F.C.

\$1,400—For 6 room cottage on Dundas Street, \$100 down, balance monthly. No. 493 F.E.

R. W. Simons
105 Dalhousie Street
Cor. Market
Phones: Office 799; Residence 1229

FOR SALE!
New brick cottage, No. 340 St. Paul's avenue, 6 rooms, large lot; cement floor in cellar, good location. This can be bought on very easy terms. Small payment down; balance monthly.
John McGraw & Son
Room 10, Temple Bldg., Building Contractors, Real Estate, Brokers' Insurance. Office Phone 1227, Residence Phone 1228.

For a Quick Sale

\$275 down, \$12 per month for a brick cottage, 6 rooms, hall, pantry, summer kitchen, cellar, cement floor. Lot 38 x 15. Price \$1,500.
\$400 down for a 2 storey brick house in first class location for boarding house; contains 12 rooms, 2 halls, clothes closets, cellar full size, cement floor, verandah; sewer connection. Large lot with fruit trees. Price \$1,850.
\$500 down for 2 storey house, 7 rooms, gas, cellar, cement floor, sleeping porch, verandah; complete 3-piece bath. Ideal location. Price \$3,000.
\$2,350 for a 2 storey red brick house, containing 3 bedrooms and clothes closets, hall, parlor, dining room, kitchen, gas, electric lights, cellar full size of house, verandah, nicely decorated. Lot 52 x 107 with fruit trees. A snap.

S. P. Pitcher & Son
Auctioneers and Real Estate Brokers
Issuers of Marriage Licenses
43 MARKET STREET
Office Phone 961, House 889, 515

"Everything in Real Estate"

P. A. Shultis & Co.
Insurance and Investments,
7 South Market Street,
\$1,300—New brick cottage; gas electricity. Easy terms.
\$2,000—New 2 storey brick, complete plumbing, gas, electricity; 2 compartment cellar. Easy terms.
\$2,350—New 2 storey brick; all conveniences except furnace. Lot 52 x 110. Easy terms.
\$2,400—Bungalow, North Ward.
\$2,950—New 2 storey brick. All conveniences and very modern.
TO RENT—Several nice houses.
Phones: Office 326; House 1913
Open Tues. Thurs. and Sat. Evgs.
ISSUERS OF MARRIAGE LICENCES.

FOR SALE

\$2,200—New buff brick bungalow on St. Paul's avenue; contains hall, parlor dining room, kitchen, three bedrooms; bath room, large cellar, cement walks, an extra nice home, and will sell on easy terms.
\$3,000—New red brick house on St. Paul's avenue and three choice lots. The house contains open hall, parlor with grate, dining room, kitchen, parlor, three bedrooms, bath room, large cellar, electric light with nice fixtures. This is a nice property and lots will sell quickly.
\$1,500—Red brick cottage in East Ward, just completed; nicely laid out and a bargain; lot 33 x 132.
\$1,650—Lot on Chestnut avenue, 50 x 132; an extra good location and a good buy at the above price.

Jno. S. Dowling & Co.,
LIMITED
Bath Phones 188, Night Phones 561,
1284, 1237 and 1691.
54 MARKET ST., BRANTFORD.

For Sale

200 Farms, all sizes. Call for catalogue.
\$2,500 for 62 1/2 acres; frame house, 10 rooms; two barns; one 28 x 46 barn No. 2, 30 x 50. Fifty acres cleared, balance pine hard wood bush. Four acres of choice fruit.
\$3,200 for 50 acres, good frame house; 8 rooms; good cellar; bank barn, 32 x 60; drive shed 30 x 30. 4 acres of fruit; heavy loam soil.
\$3,000 for 52 acres, 45 cleared, balance bush. White brick cottage, 6 rooms. Bank barn 30 x 60.
\$12,500 for 130 acres on Governor's Road, 7 miles from Brantford; frame house, 1-1/2 storey; good cellar; two bank barns, one 40 x 70; barn No. 2, 30 x 52. Best of soil.

George W. Haviland
Real Estate Bell Phone 1530
61 Brant St., Brantford.

For Sale

\$1450—Two storey brick, eight rooms, double lot, good condition, location A1. Price away down, as owner lives West and wants a little ready.
\$2400—Two storey brick, first-class shape, 3-piece bath, ideal location, North Ward. Terms easy.
\$100 each for lots and on up, according to your idea. Help yourself.
"Our farms are worth your while." At present we have a \$2000 bargain, but we cannot pass it around, so call and see our new offices over Ryerson's Fruit Store, No. 20 Market St.
Money to Loan. Patent Solicitors.
Phone 1458
Fair & Bates