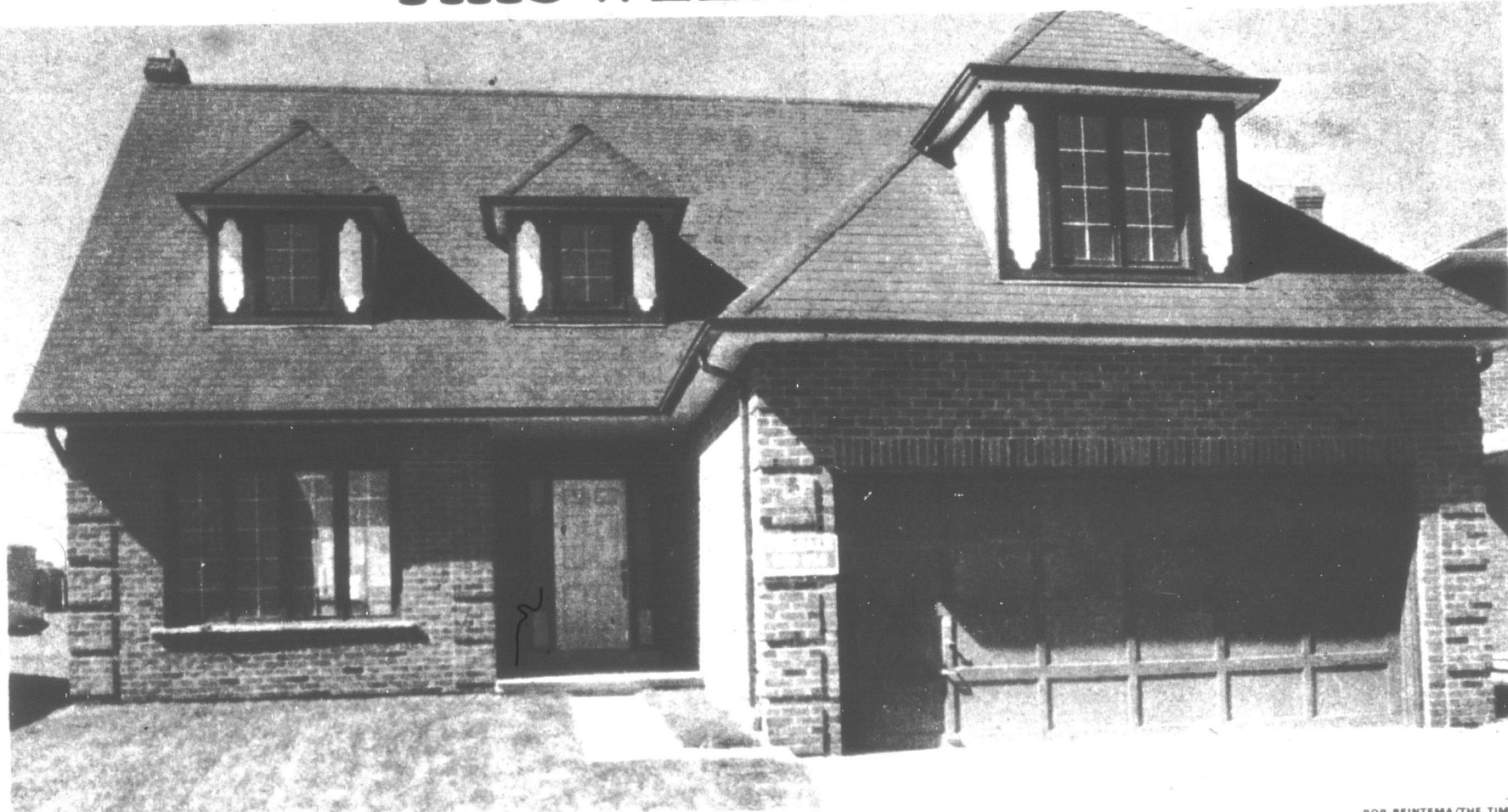


THIS WEEK'S HOME



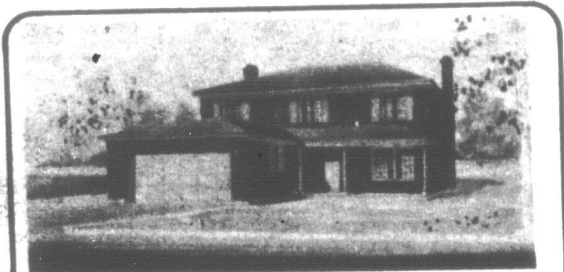
White Oaks Homes presents the Oakridge Model on Edgeware Road, Oakville. This attractive, well-built, Cape Cod design features a comfortable main floor Family Room with a warm log-burning fireplace and a walkout to the rear garden. The large Hollywood-style kitchen includes breakfast nook for family meals plus a second walkout to the garden. A

separate Dining Room and Living Room for formal entertainment and a main floor laundry room and powder room for convenience. The entrance Foyer is dominated by an oak staircase leading to four spacious bedrooms plus a bonus room over the double car garage which could be used as a Den or 5th bedroom, a four-piece ensuite and a four-

piece main bathroom. This brand new 2,400 square foot home is priced at \$116,900 and is available for Fall occupancy. An excellent \$70,000 five-year First Mortgage is available at 10 1/4%. For more information call Barbara Dulmage or Peter Marshall at 844-2076 or at White Oaks Realty, 305 Lakeshore Rd. W. 274-7474.

ROB BEINTEMA/THE TIMES

SHERIDAN HILLS



The Oakwood

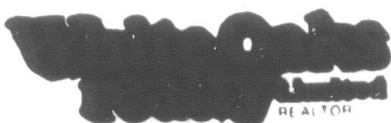
BUILT BY OAK-WOODS HOMES

Located in Sheridan Hills, north-east Oakville, on Grand Blvd at Fleetwood Rd. Four designs, ranging in size from 2,136 sq ft to 2,400 sq ft. Priced from \$111,500 to \$114,900 with \$70,000 first mortgages available at 11%. Contact either Barbara Dulmage or Peter Marshall at 844-2076 (site) or 274-7474 (office).

10 1/4 - 11 1/4 %

WHERE APPLICABLE

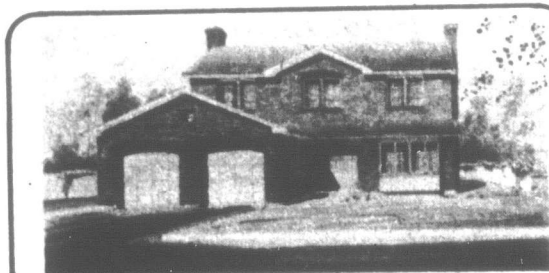
Call today for your complimentary brochure



A RECOGNIZED LEADER IN NEW HOME SALES

274-7474

SHERIDAN HILLS



The Pinewood

BUILT BY WHITE OAKS HOMES

Located in Sheridan Hills, north-east Oakville, on Fleetwood Rd and Edgeware Rd. Four designs, ranging in size from 2,136 sq ft to 2,400 sq ft. Priced from \$108,900 to \$116,900 with \$70,000 first mortgages at 10 1/4% where applicable. Contact either Barbara Dulmage or Peter Marshall at 844-2076 (site) or 274-7474 (office).

SAWMILL VALLEY



The Somerset

BUILT BY ARTHUR BLAKELY LIMITED

Located in Sawmill Valley, south-east of Burnhamthorpe Rd and Mississauga Rd. Ten designs available over three phases, ranging in size from 2,450 sq. ft. to 3,050 sq. ft. Priced from \$133,500 to \$166,000. Financing for Phases I-III respectively is \$75,000 at 10 1/4%, \$95,000 - \$100,000 at 11%, and \$95,000 - \$100,000 at 11 1/4%. Contact either Jean Cottier or Peter Howell at 828-2871 (site) or 274-7474 (office).

PAISLEY BOULEVARD

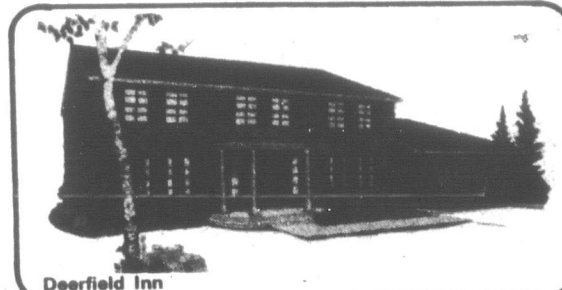


The Oak III

BUILT BY WHITE OAKS HOMES

Introducing the first 10 of 40 planned homes located in Mississauga at Paisley Blvd. and Anitqua. Three designs, ranging in size from 1,255 sq. ft. to 1,912 sq. ft. Priced from \$77,900 to \$87,400, with first mortgages, where applicable, from \$57,300 to \$65,500 at 11%. Contact Lois Hearn at 276-6484 (site) or 274-7474 (office).

BALLYCLARE WOODS



Deerfield Inn

BUILT BY CARAGAY HOLDINGS LIMITED

Located in Ballyclare Woods, Ballyclare Drive, Mississauga. Five designs with alternate elevations, ranging in size from 2,558 sq. ft. to 2,971 sq. ft. Priced from \$142,500 to \$153,400. First mortgages available at current rate. Contact either Terry Frost or Lorne Demerse at 276-6472 (site) or 274-7474 (office).