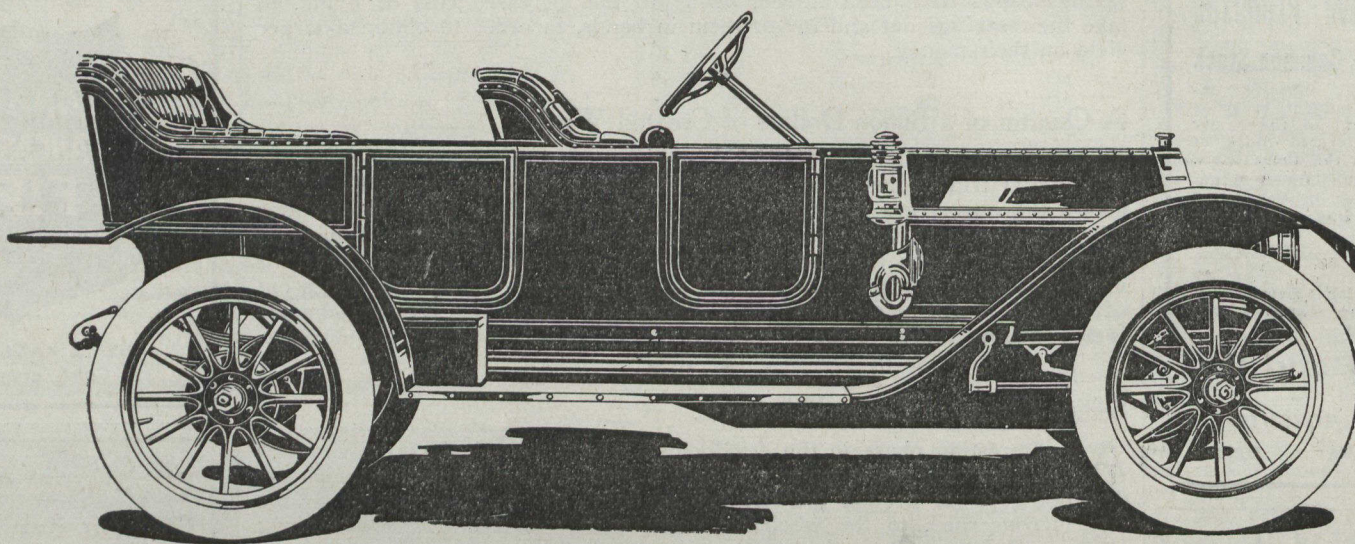


Schacht

A Medium-Priced High-Powered Car, embodying many of the superior features and the finish of cars double the price



1912 MODEL J. M. TOURING CAR, 120-inch WHEELBASE, 7-PASSENGER, 45-50 H. P., PRICE \$2,450

SPECIFICATIONS MODEL J. M.

AXLES: Front, I beam section; Rear, Semi-floating.
BRAKES: Two separate independent sets of rear wheels.
CARBURETOR: Schebler.
CLUTCH: Leather-faced cone.
COOLING: Centrifugal pump.
DRIVE: Propeller Shaft.
FUEL SUPPLY: Gasoline, 15 gallons.
IGNITION: Jump spark with magneto.
LUBRICATION: Plunger pump, Oil supply in crankcase, 2 gallons.
MOTOR: Horse Power, 45-50; Bore, 4½ inches; Stroke, 5 inches; Cast en bloc.

SPEED ON DIRECT DRIVE: 4-70 M.P.H.

SPRINGS: Special alloy steel; Front, Semi-elliptic; Rear, Three-quarter elliptic.

STANDARD EQUIPMENT: Mea Magneto, two gas lamps, two oil side and one rear lamp, jack, horn, all tools, pump and tire repair outfit, top and windshield.

STEERING: Worm and sector, 18-inch wheel.

TIRES: 34 x 4 inches.

TRANSMISSION: Selective, Forward, 3 speed changes: Reverse, 1 speed change.

WEIGHT: 2,750 lbs.

WHEEL BASE: 120 inches.

Left-hand Drive; Gear Control and Emergency Brake in centre of car on all pleasure models.

The Schacht line of Motor Cars and Trucks is an example of the highest state of perfection in the manufacture of Motor Cars. The motor is four-cylinder, cast in bloc—in operation it is absolutely noiseless, and entirely lacks vibration. It is beyond peradventure the most perfect motor car to be found in any automobile manufactured or sold in Canada to-day. In addition to the above-mentioned features, it is so constructed as to place the Schacht cars practically without competition as hill climbers.

In conjunction with the motor, the peerless Mea magneto is used for ignition, and the Schebler carburetor for gasoline supply.

We are manufacturing cars of both 40 and 50 horse power, the same type of motor is used in both cases, the only difference being in the stroke and bore—in the 50 h.p. models the gears, etc., are of slightly heavier construction. Our tops, bodies and upholstery are the best we can obtain regardless of cost, and from comparison it will be found that no car, for sale in Canada, irrespective of price, has finer upholstery, painting or material than is found in the Schacht line.

The Schacht Model J. M. at \$2,450.00, fully equipped, combines in itself the specifications and qualities of cars ranging from \$3,750.00 to \$5,000.00. The long wheel base, the large wheels, the roomy driving seat and five passenger tonneau, has been heretofore found only in the highest priced cars. In the Schacht for 1912 we have incorporated the left-hand drive and centre control, enabling the driver to use the necessary right hand to operate his gear control and emergency brake levers.

Due to the perfection of the Mea magneto, we have been enabled to dispense with the dual ignition. Such a hot, high tension spark being produced at the first movement of the magneto, that only a quarter turn of the crank is necessary to start the motor.

In addition to the standard equipment, such as five lamps, tools, etc., we are equipping our cars with English mohair top with envelope, Windshield and Speedometer. Schacht Cars have all bright parts nickel-plated, and our standard colour is deep Royal Blue.

Our line of pleasure cars includes: Our 50 h.p. Service Passenger full foredoor Limousine, upholstered in Bedford cord and lace, and equipped with speaking tubes, electric cigar lighters, electric light annunciators, etc., at \$4,200.00.

Our 50 h.p. model J. M. 7 Passenger Touring Car at \$2,450.00.

Our 50 h.p. Raceabout Roadster at \$2,200.00.

Our 40 h.p. model G. F. 5 Passenger Torpedo Touring Car at \$2,350.00.

Our 40 h.p. Model F. L. Foredoor Roadster, at \$2,150.00, and our truck line includes: 40 h.p. Delivery Wagon.

Model 21—4 ton truck—\$4,100.00.

Model 18—2 ton truck—\$3,650.00.

Demonstrations with any of our pleasure models or commercial cars will be gladly given upon request. Full information and specifications can be found in our comprehensive catalogue, which will be sent on request to any interested parties.

The Schacht Motor Car Company of Canada, Ltd.

GENERAL OFFICES & WORKS

Sanford Avenue S., Hamilton

TORONTO SALES ROOM: Pending the completion of our new Show Rooms and Garage we have temporary Show Rooms at

315 Yonge Street

C77