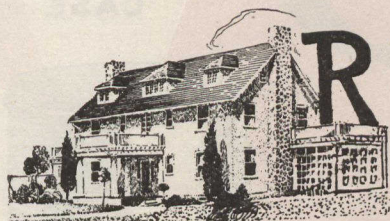


LET LAWRENCE PARK MAKE MONEY FOR YOU



REAL, active development in this superior residential section of North Toronto has made Lawrence Park highly desirable for home-building and investment. In this improved district are the modern homes of many of Toronto's most prominent citizens. Lawrence Park has always been a profitable investment; and now, because

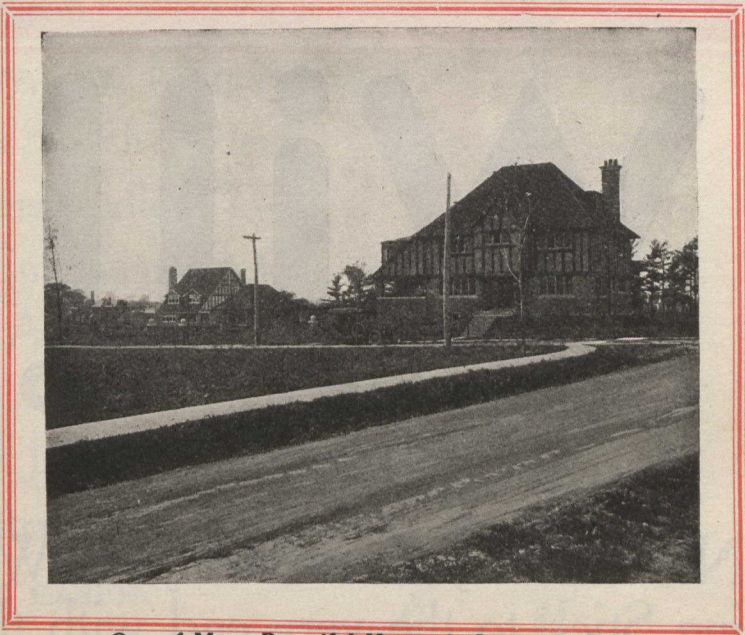
of the by-law annexing the town of North Toronto to the City of Toronto, the value of Lawrence Park lots will advance rapidly. There is money to be made now by purchasing Lawrence Park lots at present prices and holding for a little while. Read this special offer.



A Residence of Quality in Lawrence Park

SPECIAL OFFER

Prices are trembling now on the verge of an upward rise, due to the annexation of North Toronto, which enactment goes into effect on December 15th. Until that time we will give you the benefit of our old prices, which are surprisingly low, with easy terms. Use the coupon to-day as the first step toward securing an investment that will add dollars to your bank account as rapidly as Toronto is adding thousands to its population.



One of Many Beautiful Homes in Lawrence Park

MAIL THIS COUPON

The information the coupon will bring you costs nothing, and, if acted upon promptly, will make you many dollars.

Name.....
Address.....

The types of Lawrence Park residences shown on this page indicate the high quality of this property, which will always be sought by high-class home-builders. It is beautifully landscaped with trees and shrubs, with every convenience; water, gas, electric light, sewers, cement walks, roadways, phone service, car service, postal delivery, etc. There is only one way for Lawrence Park to go,—that is *ahead*. Mail the coupon to-day for lot plan, price list and complete information about Lawrence Park lots.

**DOVERCOURT LAND, BUILDING
AND SAVINGS COMPANY, LIMITED**

24 Adelaide St. East, Toronto. Tel. M. 7280
W. S. DINNICK, PRESIDENT.