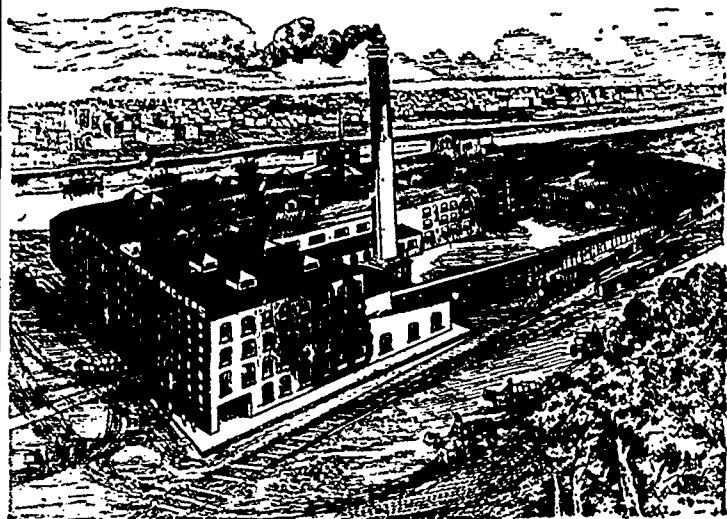


# GRIFFIN HAMS



ARE MADE FROM FINE,  
GRAIN FED HOGS. THE  
KIND THAT PRODUCE  
TENDER, JUICY HAMS.  
THEY ARE CURED AND  
SMOKED WITH PARTICU-  
LAR CARE IN ORDER TO  
PRODUCE THE FAMOUS  
GRIFFIN BRAND FLAVOR

**J. Y. GRIFFIN & CO.** Pork Packers  
WINNIPEG  
Branches-Vancouver and Nelson

We are to-day paying the following  
Prices for Produce delivered  
at Winnipeg nett:

Freshly Gathered Eggs	- -	11c
Round Lots Dairy Butter, fair to choice in quality	-	10½ to 11c
Finest Creamery	- - -	15½c

Buyers the year round at market values.

**R. A. ROGERS & COMPANY Ltd.**  
WINNIPEG

F. D. ROE, President

R. ABERNETHY, Vice-President

T. F. PATERSON, Sec.-Treas.

The Canadian Pacific  
Lumber Company Limited

Manufacturers of and Wholesale Dealers  
In all Classes of British Columbia



**LUMBER, LATH,  
SHINGLES,  
MOULDINGS, Etc.**

PORT MOODY, B.C.

CAPACITY: LUMBER-60,000 feet per Day; LATH-20,000; SHINGLES-120,000.

We have the largest dry kiln capacity of any mill in B.C., also the largest amount of sheds, and these are well stocked with Manitoba lumber. We have seven planers and are prepared to ship promptly. We understand the requirements of Manitoba dealers. Send to us for your next car. F. V. TOWN, Manitoba Salesman

## THE IMPLEMENT TRADE

### THE TWINE MARKET.

The general condition of the twine market remains as reported last week. Some of the manufacturers report sales equal to their productive capacity up to Aug. 1, and are accepting no new business requiring delivery prior to that date. The demand has been fairly active for the past ten days, but as stated last week, the concerns which are holding to the scale price are obtaining more business than some that are quoting the minimum rates. The reasons for this were set forth in our last issue.

Harvest is in progress throughout the middle belt. Winter wheat is practically all harvested and work has commenced in the oats fields. The excessively hot weather of the past ten days has caused the oats to ripen earlier than was expected, so that the harvest will not be materially later than usual. Unfortunately the same torrid weather, accompanied by dry hot winds, has seriously damaged the oats. Reports from the principal oats sections promise less than an average crop. In some places not more than half the yield which earlier conditions seemed to indicate. This, however, will not affect the sale of twine to oats growers, but the amount required for this cereal will, as previously pointed out, be much below the average, owing to the thin straw and the extraordinary absence of weeds.

The brisk demand that has prevailed since harvesting fairly begun, coupled with the known deficit in sisal fibre receipts as compared with last year, has given rise to some talk, if not fears, of a twine famine. Had the oats required the usual amount of string there would be a possibility of such an outcome, allowing for unequal distribution and the difficulty in controlling dealers' surplus stocks, but under existing conditions it does not appear that the demand will outrun the supply. Still some of the most conservative of twine men would not be surprised if such should be the case. Dealers with surplus stocks should not entertain false hopes but it may be well for them to advise their jobbers and manufacturers of the amount held and the price they are willing to sell at.

Prices remain as last quoted. They range from 7½ to 8½ cents, and as most of the current business is in small lots, few made any distinction in prices on account of quantity.—Farm Implement News.

### LUMBER TRADE NOTES.

The Moyle Lumber Co., Moyle, B.C., are preparing to begin operations shortly. The company has two camps operating getting out timber, and the mill, which will have a capacity of 40,000 feet per day, is in course of erection.

Local wholesale dealers in hardwood lumber say that their business this summer is turning out very satisfactory. There is a good demand for all kinds of hardwood building materials, especially oak. Prices are holding fairly steady for most staple lines. Any variation noticeable are in a downward direction.

Manufacturers of mouldings, sash, doors, etc., here find business very much improved since the opening of July and they anticipate a very active trade during the balance of the year. There are facilities here now for turning out work of this kind which will compare well with anything which can be brought in from the east or south and builders are showing their appreciation of this fact by placing their orders with local mills this year.

Twenty-six business failures were recorded in Canada last week as against sixteen the week before and twenty-six in the same week a year ago.

Rossland, B. C., July 17.—There has been no development of interest here in connection with the miners' strike. The situation is unchanged since Friday. Union matters are all arranged and it looks as though both sides were settled down to a waiting game. The board of trade committee addressed a communication to the union setting forth that the strike ballot was not carried out in accordance with the union because less than half the members voted on the strike, while the constitution called for an affirmative vote of three-quarters of the resident members. No reply has been received yet and it seems to be admitted that the board's intervention will be futile.