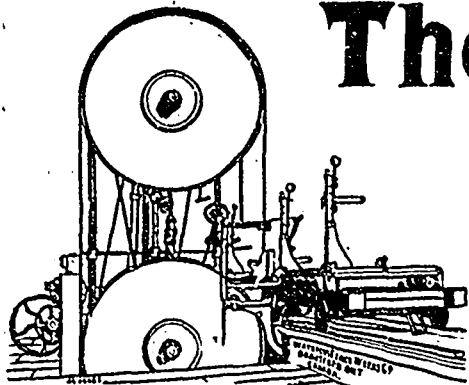
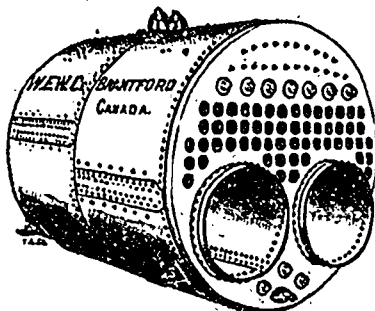


The Best is the Cheapest

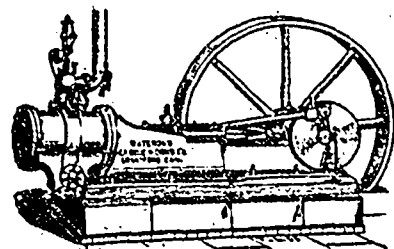
This is True Especially in Machinery.



1844

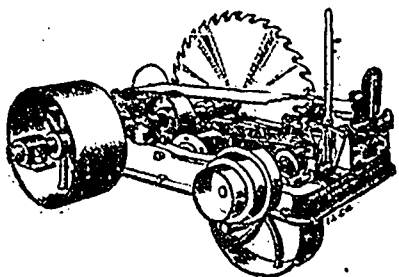


1890

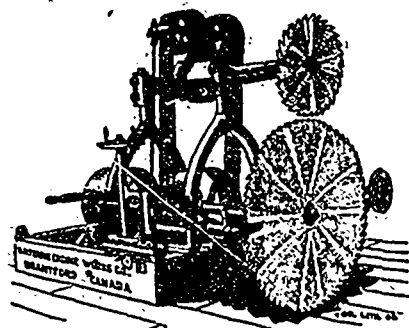
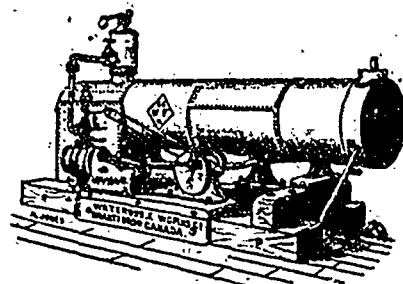
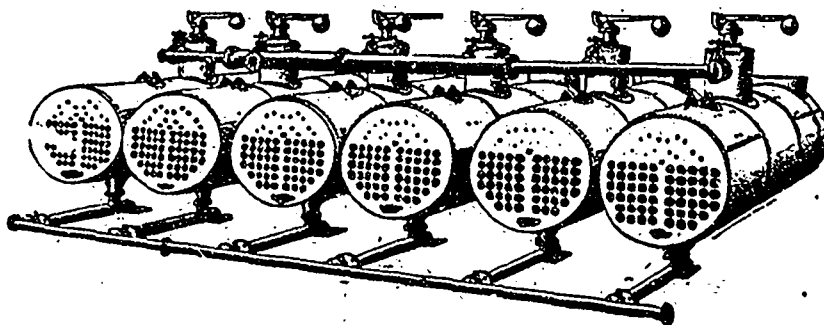


Stationary and Portable Engines.

OUR SPECIALTY.



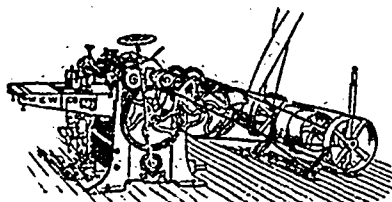
Saw Mill Machinery



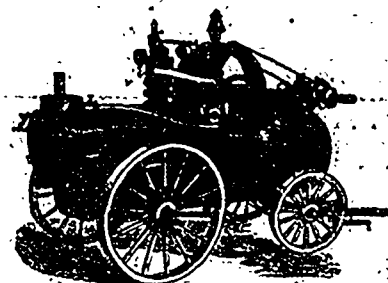
Band and Circular



Combined Planer and Matching Machines From \$170 up.



Several Styles of Mill Dogs for Plain and Quarter Sawing.



Friction Grip Pulleys.



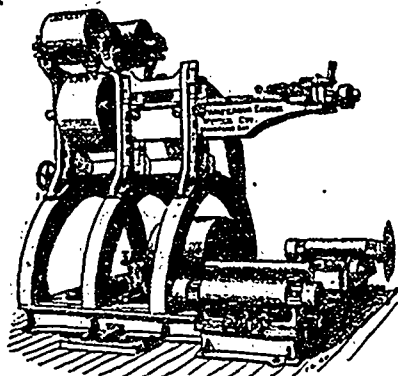
Write for Circulars stating what machinery you require, capacity, &c. Special facilities enable us to quote very low prices.

WATEROUS Engine Works Co., Limited, Brantford, Canada.

REPRESENTATIVES.

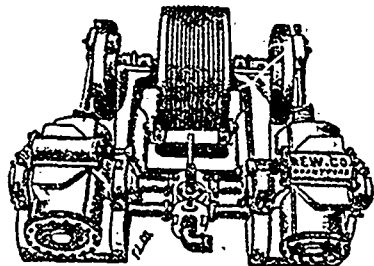
Montreal, A. A. Benson.
Victoria, B. C., Nichols & Renonts.

Quebec, W. A. Ross
Toronto, Hugh Cameron.



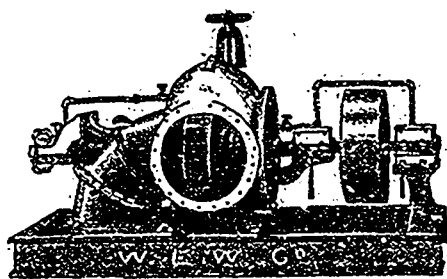
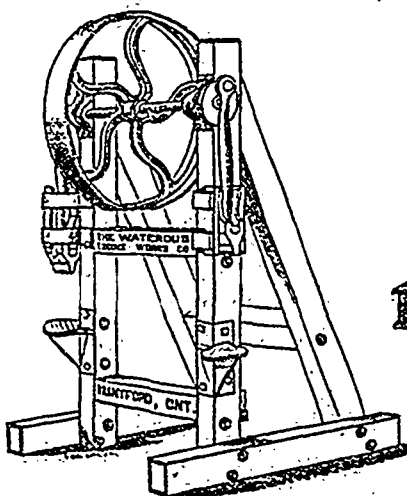
Oscillating Engine, Steam Feed

Turbine Water Wheels and Mining Wheels
Plain leaflet, globe case.

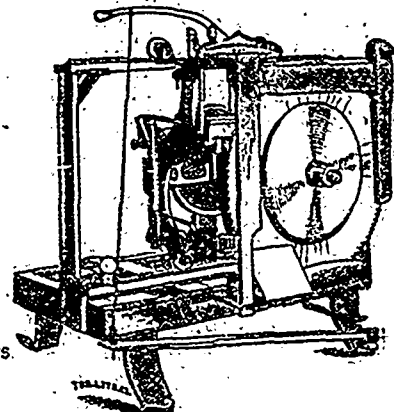


Gang Edgers

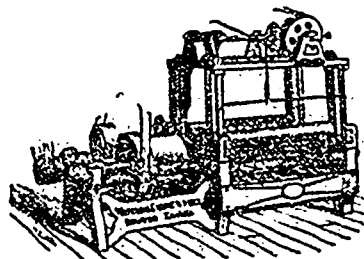
Heavy, Medium and Light



Wood Yard Outfits, Double Axe Splitters and Swing Wood Swans.



LATH MACHINES.



Shingle Machines

Ewart Link Belting, the great Conveying medium.

