

# The **XXX** Saw Gummer and Sharpener

*Has no Rival*  
FOR VARIETY, CAPACITY OR QUALITY OF WORK

OR FOR

**SIMPLICITY, DURABILITY, CHEAPNESS**

Will take saws from 6 inches to 6 feet diameter; sets the saw forward one tooth at a time automatically; sharpens any saw perfectly, giving the teeth any desired pitch, and making all the teeth exactly alike. Will sharpen 20 teeth in an ordinary saw mill in one minute, or 100 teeth in a shingle saw in four or five minutes. The cut shows outline of mill saw 54-inch diameter.

PEMBROKE, ONT.

MR. F. J. DRAKE, Belleville.

Dear Sir,—Re the conversation you had with our manager, I am instructed to inform you that the machine we purchased from you early last spring has proved to be a very useful piece of machinery. Our Mr. McCool, who uses it, is greatly pleased with it, and recommends it to any person who may require a Saw Filer. Wishing you every success with your Filer, we remain,

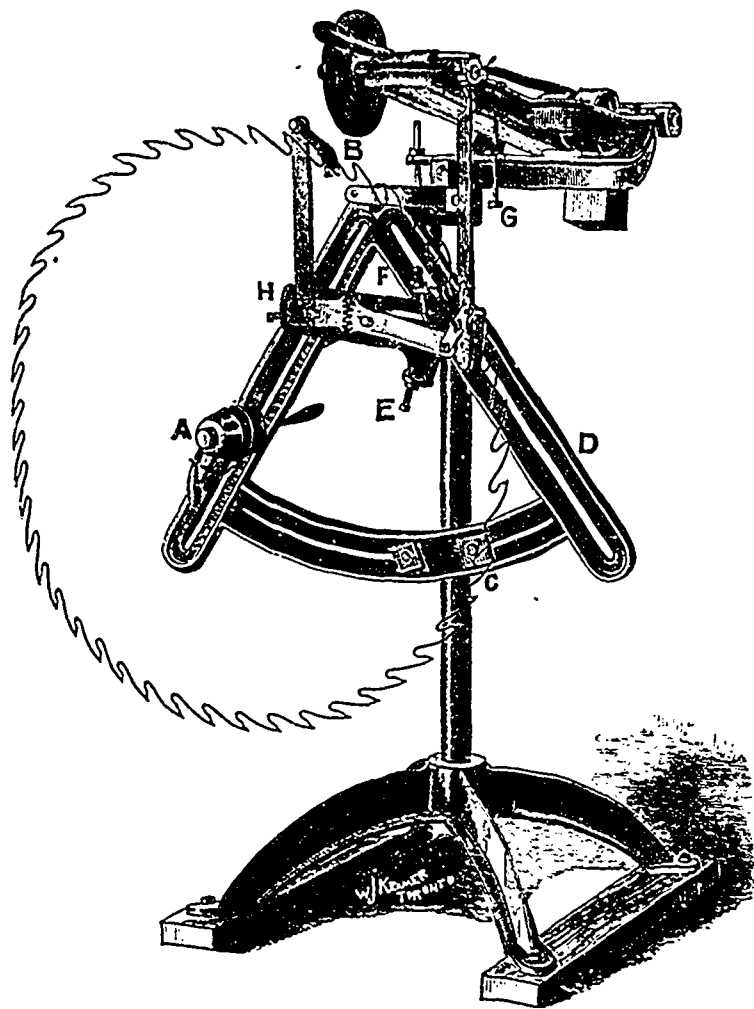
Yours truly,  
(signed) THE PEMBROKE LUMBER CO.  
Per W. H. Bromley.

SEND FOR CATALOGUE OF SAW MILL MACHINERY.

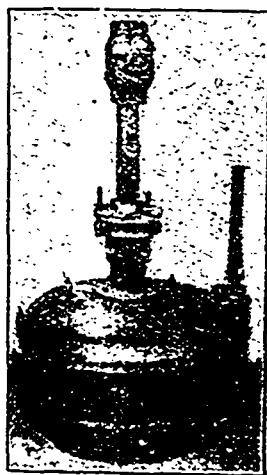
Manufactured Only by . . .

**. . . F. J. DRAKE,**

**BELLEVILLE, ONT.**

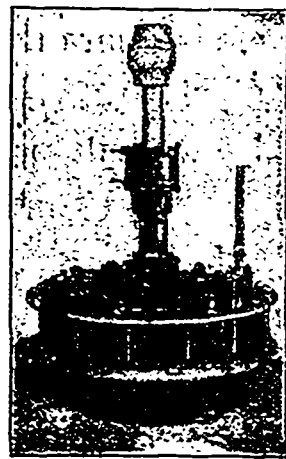


## Do You Need a Turbine?



Now is the best possible time for replacing your old, worn-out wheel with a new Turbine that will save Worry, save Time, and make Money for you. If you want a well built wheel, a wheel that will give you steady reliable power every day, a wheel that will save water, a wheel that will last you a lifetime, and that is sold at a reasonable price, then write us for catalogue and prices on the

**Standard Leffel and Vulcan Turbines.**



They are better developers to-day than ever before, and are growing in popularity, as our order books show.

We have now for distribution our new **SAW** and **SHINGLE MILL MACHINERY CATALOGUES**, with engravings and descriptions of our machines with their latest improvements. We will be glad to send you one on receipt of your address. You cannot buy a better Portable Mill than the "Lane Improved".

**MADISON WILLIAMS,** PORT PERRY, ONT.

H. E. PLANT, Agent,  
Cor. Common & Nazareth Sts., MONTREAL.

SUCCESSOR TO  
PAXTON, TATE & CO.

Winnipeg Machinery & Supply Co.  
Western Selling Agents, Winnipeg.