

NOTES.

A meeting of the representatives of the local lime manufacturing companies was held in Toronto last week at which the advisability of substituting coal for wood fuel, was considered.

The Imperial Plaster Co. have succeeded to the business of Mr. W. A. Bradshaw, and are erecting a new factory near the King street subway, Toronto, for the manufacture of Fibrous Plaster. It is the intention to also establish a factory in Montreal. The Company have taken an option upon a gypsum quarry situated between Dunnville and Cayuga, with the object of manufacturing plaster of Paris, which is an important ingredient of fibrous plaster.

There are a great many methods of lighting a church or other large auditorium now in vogue, some of them very good attempts at successful lighting, but the system that never seems to fail, and has scored over 20,000 successful installations in churches alone in all parts of the world, is that of the famous Frink reflector, manufactured by I. P. Frink, Pearl st., New York, familiarly known to thousands as "The Great Church Light," a title gained by nearly half a century of work in this line.

A building is now in course of erection in Birmingham, England, that represents some novel features in construction. The

plot has remained unoccupied for many years because the tunnel of the Great Western Railway runs three feet beneath the surface of the ground and will not bear any more weight than is at present upon it. The architect has now planned a building which meets these objections. The building is three stories in height and 25 feet of it will project over the tunnel, carried on huge cantilevers, six in number. A mass of concrete, 16 by 15 feet, and weighing 160 tons, hangs suspended from the other end of the cantilevers as a counterpoise.

A thoroughly artistic piece of work is the brochure of 76 pages, entitled "Gillows: A Record of a Furnishing Firm during Two Centuries". It is an entertainingly written history of a celebrated English firm of furniture designers and manufacturers, and contains numerous illustrations of their skilful work. The business was founded in Lancaster about 1695, by Robt. Gillow, a joiner, and has attained large proportions and a world-wide reputation. The factories of the firm are still at Lancaster, with show rooms in Oxford street, London. The latter were established about 1740 in what was then almost in the country. The record of this firm is unique. It embraces an important period in English history and the most important developments in furniture design.

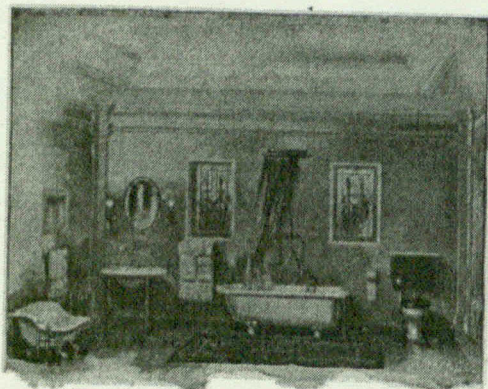
# The Canadian Bridge Co., Limited

Walkerville, Ontario.

MANUFACTURERS OF

## STEEL BUILDINGS, ROOF TRUSSES

Railway and Highway Bridges and Structural Steel and Iron Work of all descriptions  
Estimates furnished upon application.



## The "ELGIN" LOW-TANK CLOSET COMBINATION

IS ONE OF THE ACCESSORIES TO  
THE MODERN BATH ROOM. . . .

Symetrically Constructed      Positive in Action

THE JAMES MORRISON BRASS MFG. CO.  
TORONTO, ONT. LIMITED.

High Grade Sanitary Specialties

## WIRE WORK



Ornamental Iron Work

Fire Escapes

Wrought Iron Fencing

NEW CATALOGUE

THE GEO. B. MEADOWS Toronto Wire, Iron and Brass Works Company, Limited  
TORONTO, CANADA