

# MINUDIE COAL COMPANY, L't'd.

Operating the **MINUDIE MINES** in the Celebrated **CUMBERLAND COAL FIELD**

Producers of High Class **SCREENED COAL, ROUND, RUN-MINE, SLACK.**

The best for Foundry or Furnace, Locomotive or

Stationary Engines, for Domestic or General use

\* **CLEAN AND CLINKERLESS.** \*

Direct connection with the I. C. R.

**Colliery**

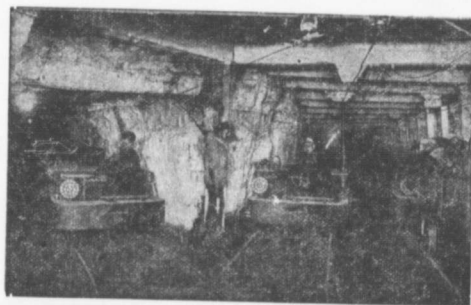
**RIVER HEBERT, N. S.**

Mine Manager:—HY. MCCARTHER. Business Manager R. S. HIBBARD, River Hebert, N.S.  
G. A. FORBES, Sec'y Treas. Head Office 66 Guardian Building, Montreal.



**JEFFREY LOCOMOTIVES HAUL THE WORLD'S COAL.**

Bulletins on  
Electric  
Locomotives  
No. 10.  
Mining Machines  
No. 11.  
Mailed  
Free.



Branches:  
NEW YORK,  
CHICAGO,  
PITTSBURG,  
DENVER,  
KNOXVILLE, TENN.,  
CHARLESTON, WV.

Jeffrey 6 ton, single-end control, ELECTRIC GATHERING LOCOMOTIVES at work in the  
Mines of the National Mining Company.

The **JEFFREY MANUFACTURING COMPANY, COLUMBUS, OHIO, U. S. A.**

