

The under surface was rather paler than the upper, with a central row of yellowish-white dots from fifth to tenth segments inclusive; from the second to the fourth, the colour was bluish-green, and on twelfth segment was a patch of yellow; feet bluish-green, with a streak of brown, prolegs brown on the outside, but bluish-green within.

Two of these larvae entered the chrysalis state on the 19th of September, having formed a rude case in which to secrete themselves, by binding two leaves together with threads of silk. One of them produced the imago on the 18th, the other on the 21st of May following.

### NOTES ON MEGACHILE BREVIS, Say.

BY E. B. REED, LONDON, ONT.

While inspecting, during the past summer, the fruit orchards of a friend residing in this neighbourhood, my attention was attracted by the peculiar appearance of the leaves of a young plum tree. At the first glance, I

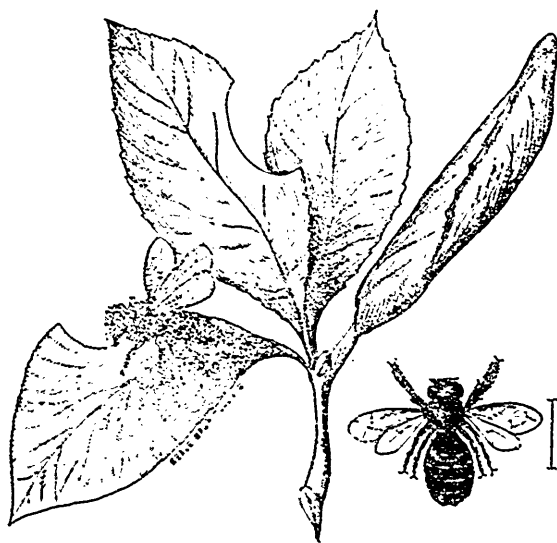


FIG. 38.

thought it might be affected by *aphides*, but, on closer examination, I found unmistakable evidence of the work of some leaf-cutting bee, in the circular holes in many of the leaves, and on opening one of the coils of leaves, of which there were four or five, I discovered the curious chambers