

THE GREEN GRAPE-VINE SPHINX.



HERE may frequently be found on grape-vines of all varieties during the summer, caterpillars shaped as in the cut given herewith. When full-grown this caterpillar is about two inches in length with a small head. The body is green and is covered with small yellow dots. Along the sides are seven pale stripes sloping backwards and shaded behind with dark green. A white stripe also margined with dark green runs along each side from the horn at the end of the body. The series of spots shown on the back consists of blotches of pale lilac, bordered with yellow. The anal horn, which is nearly a quarter of an inch long, is blueish spotted with black in front, and yellow behind. When at rest the head and the next two segments are drawn back into the fourth and fifth, which are much distended. This habit is also characteristic of the Achsmom Sphinx, a much larger caterpillar, which is occasionally found on grape-vines with the Green Grape-vine Sphinx. It, however, may be at once recognized by its ruddy color, and from the fact that when full-grown, instead of the anal horn, it has merely a polished tubercle.

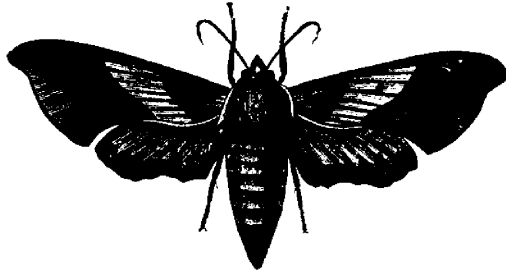


FIG. 994.—THE GRAPE-VINE SPHINX.

When the Green Grape vine Sphinx is full-grown, it leaves the foliage and forms a loose cocoon on the ground or near the base of the vine on which it has fed. The chrysalis is of a pale-drab color finely dotted all over with black points. The breathing pores along each side are black and conspicuous. There are two broods of this insect in the year. The moths from the first brood appear in July, and these lay eggs the caterpillars of which attain full growth in September, pass the winter in the chrysalis state and appear as moths in the following May. The perfect insect is a very beautiful moth, which expands about two inches and a half from tip to tip of the opened wings. The front wings are of a dark olive-green color, crossed by bands of greenish-gray. The hind wings are of a dull brick red.

These caterpillars are sometimes very destructive to the foliage of grape-vines, but are easily destroyed and can be controlled without difficulty by hand-picking.

Central Exper'l Farm, Ottawa.

JAS. FLETCHER.