

Shon Plates

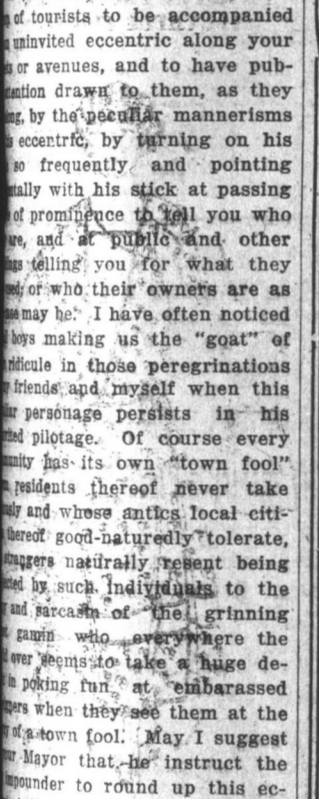
Dressmaker should...
 these will be found...
 to from this, to



Very smart in...
 blouses and skirts...
 new and distinctive...
 the model are altogether...
 pleasing.

Tourist Traffic

...Your editorial...
 the tourist traffic...
 a commendable...
 country in...
 are great...
 any other part...
 for its climate is...
 scenery delightful...
 most hospitable...
 charged by your...
 transportation...
 thousands more...
 come...
 yearly, in my...
 capacity of...
 special traveller...
 I visit here...
 every...
 time my...
 always...
 this...
 season of...
 yours...
 of my...
 guests...
 at the...
 put up...
 and with...
 whom...
 after year...
 about New...
 are simply...
 struck on...
 it...
 and I now...
 encourage...
 others...
 alone to...
 your...
 attraction...
 May I be...
 permitted...
 how...
 call your...
 attention...
 to one...
 of...
 which...
 I find...
 in...
 and when...
 the time...
 I come...
 and when...
 to whom...
 I must...
 ask me...
 to whom...
 I must...
 view...
 its public...
 buildings...
 and...
 roads...
 I can...
 never...
 their...
 appearance...
 somehow...
 but...
 a little...
 gain...
 in...
 the...
 press...
 may...
 help...
 me...
 out...
 not...
 for...
 my...
 own...
 sense...
 of...
 mind...
 but...
 the...
 benefit...
 of...
 tourists...
 coming...
 to...
 the...
 advantage...
 of...
 the...
 return...
 caused...
 by...
 the...
 pernicious...
 practice...
 of...
 an...
 individual...
 whom...
 I...
 am...
 told...
 the...
 House...
 officer...
 When...
 I...
 met...
 with...
 those...
 casual...
 I...
 met...
 who...
 are...
 anxious...
 for...
 a...
 walk...
 during...
 lovely...
 evenings...
 I...
 am...
 all...
 impressed...
 with...
 the...
 executive...
 official...
 and...
 my...
 fears...
 are...
 nearly...
 always...
 He...
 is...
 certain...
 to...
 cross...
 over...
 where...
 and...
 to...
 intersect...
 his...
 presence...
 amongst...
 us...
 He...
 takes...
 it...
 for...
 granted...
 that...
 he...
 has...
 the...
 exclusive...
 right...
 to...
 direct...
 the...
 traffic...
 of...
 his...
 district...
 and...
 to...
 his...
 walking...
 stick...
 to...
 the...
 pavement...
 of...
 his...
 voluble...
 and...
 eccentric...
 attitude...
 appears...
 specially...
 to...
 his...
 I...
 am...
 sure...
 you...
 will...
 be...
 rather...
 embarrassed...
 to...
 a...
 tourist...
 to...
 be...
 accompanied...
 by...
 a...
 guide...
 on...
 your...
 various...
 avenues...
 and...
 to...
 have...
 publication...
 owing...
 to...
 them...
 as...
 they...
 are...
 so...
 frequently...
 mentioned...
 by...
 his...
 frequent...
 and...
 pointing...
 out...
 his...
 stick...
 at...
 passing...
 of...
 prominence...
 to...
 you...
 who...
 are...
 at...
 public...
 and...
 other...
 people...
 who...
 are...
 selling...
 you...
 for...
 what...
 they...
 own...
 as...
 may...
 be...
 I...
 have...
 often...
 noticed...
 they...
 making...
 use...
 of...
 the...
 "goat"...
 of...
 articles...
 in...
 those...
 peregrinations...
 and...
 myself...
 when...
 this...
 natural...
 shades...
 showing...
 broad...
 corded...
 silk...
 and...
 unlined...
 Regular...
 \$4.65
 Special...
 \$3.10



...Yours truly...
 COMMERCIAL TRAVELLER...
 June 15, 1923.

YOU SAVE THE DIFFERENCE BUYING IT AT BAIRD'S. THIS STORE GOES UPWARDS. YOU SAVE THE DIFFERENCE BUYING IT AT BAIRD'S.

Another Notch Upwards

in public favour with the following Unmatchable Values in NEEDS OF THE MOMENT. READ! Make full use of the resources of this Store during

FRIDAY, SATURDAY & MONDAY -- IT PAYS

Serviceable Sensible FANCY LINENS
 to give the Bride of June

NIGHT DRESS CASES—A dainty affair, in white linen, handsomely embroidered and scalloped and worked edge, large silk ribbon bow. Reg. \$1.50 Friday, Saturday and Monday **\$1.39**

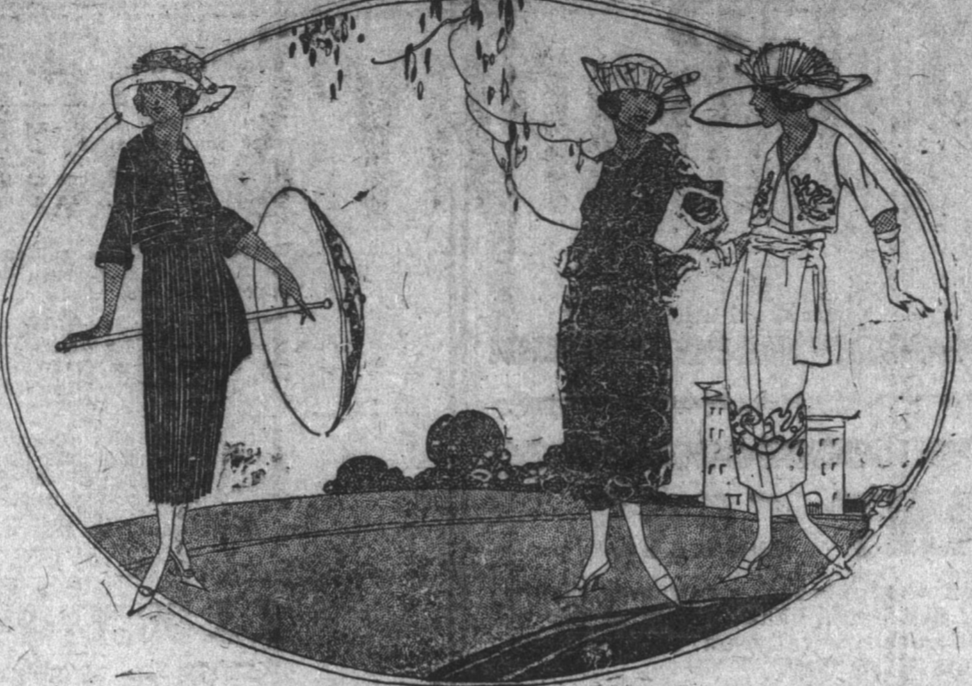
CIRCULAR TABLE CLOTHS—60 inches in diameter, pure white Damask, finished with scalloped and button holed edge. Reg. \$2.70 Friday, Saturday and Monday **\$2.49**

TABLE CLOTHS—Hemstitched White Damask Table Cloth, 58 x 68 inch size, extra strong and nicely patterned. Reg. \$2.50 Friday, Saturday and Monday **\$2.58**

BRUSH AND COMB BAGS—Hemstitched White Linen Bags, showing pretty embroidered front, gathered back. Reg. \$1.00 Friday, Saturday and Monday **89c.**

PILLOW CASES—A couple of dozen of elegant White Linen Pillow Cases, embroidered and hemstitched. Reg. \$1.70 each Friday, Saturday and Monday **\$1.48**

SHAWLS—Pillow Shape White Linen Shawls, hemstitched and embroidered, very fine quality. Reg. \$1.60 Friday, Saturday and Monday **\$1.47**



A Special Low Price on INLAID LINOLEUMS.

INLAID LINOLEUMS—Double width English Floor Linolesums, all inlaid, last for years, your choice of tile, floral and conventional designs, colouring to harmonize with almost any surroundings. Reg. \$4.40 yard Friday, Saturday and Monday **\$3.95**

LINOLEUMS—New patterns in double width Linolesums, suitable for dining room, bedroom and hallways, pretty colour blendings. A Special price for Friday, Saturday and Monday **\$2.18**

OIL CLOTHS—For table or hall, widths to 48 inches; light and dark mixtures. Special Friday, Saturday & Monday, yard **39c.**

WHITE DRILL—Extra heavy White Drill for middie suits and summer skirts, etc. Regular 80c. value. Friday, Saturday and Monday **69c.**

CASEMENT CLOTHS—36 inch Green Case ment Cloth, showing pretty fancy floral borders; very neat; washes good. Friday, Saturday and Monday, yard **43c.**

SUMMER CRETONES—24 inch all-over small floral pattern; nice to tone up your living rooms. Reg. 70c. Friday, Saturday and Monday **63c.**

Important Savings for You in Our MEN'S and BOYS' Department.

MEN'S TOP SHIRTS—These are English Shirts and therefore made in full fitting sizes. Coat style, nice striped patterns. Regular \$2.25. Special **\$1.98**

WORKING SHIRTS—Good strong Shirts in Light, Medium and Dark patterns, collar attached, pocket, seamless shoulder; wash goods. Special **\$1.25**

MIDGET SUIT CASES—Sturdy little Grips, handy for the week-end traveller, handy for outings; double clip fastening. Special **\$1.29**

SUIT CASES—24 inch double strapped Suit Cases, respectable looking and capable of standing much hanging about, protected corners to withstand the bumps, spring lock and double clips. Special **\$3.10**



Men's Soft Felts. English and American Soft Felts in spruce and natural shades, showing broad corded silk bands, silk lined and unlined. Regular \$5.00. Special **\$4.65**

FOOTBALL BOOTS—Official English League Football Boots, with arched spring sole. Our best grade and acknowledged a most superior grade. **\$6.49**

DE LUXE SHIRTS—Men's finely striped Shirts in the best of wearing and washing Percales; double soft cuffs; assorted sizes. Special **\$3.10**

Men's Straw Hats. Our medium priced Straw Hats are light in weight, smart in style and really reasonably low in price. **\$2.15** Special **\$1.75**

MEN'S FURLIN SUITS—In Striped Percales, Silk braided, button loops and Pearl buttons, assorted striped patterns. Regular \$3.00. Special **\$2.75**

SOFT COLLARS—The favored season for Soft Collars is here. Those we offer are peak fronted, in fine White Beach Linen; need no ironing. **25c.** Special each **19c.**

Table Damasks. 68 inch Table Damasks, white as the driven snow, assorted patterns and we guarantee the quality as unbeatable for anything near the price. Special **79c.**

Girls' and Boys' Dk. Tan Sandals
 Laced or double strapped styles, broad fitting shapes with extended welt, Dark Tan shades, great wearers. Sizes 5 to 8. Special **\$1.27** Sizes 9 to 12. Special **\$1.37**

INFANTS' BOOTS—Laced and Buttoned in Dark Tan and Black Dongola Kid, stout leather soles; sizes 2 to 6. Reg. \$1.30. Friday, Saturday and Monday **\$1.08**

BOYS' CANVAS BOOTS—Youth's and Boys sizes in Brown or Black Canvas, with rubber sole and heel; fine or Sporta wear. Sizes 11 to 2. Special **\$1.35** Sizes 3 1/2 to 5 1/2. Special **\$1.45**

MEN'S CANVAS SHOES—Sporty looking Oxfords in Fawn and Grey Canvas, with leather sole and heels, cool to the feet. Regular \$4.00. Friday, Saturday and Monday **\$3.45**

The Ladies' Economy Column

Every Value a Special Value READ! GLOVES

LADIES' KID GLOVES—Finest Belgian Kid Gloves, showing a new style, flared wrist, with all silk stitching at wrist, stylish, shade of assorted tones. Special Friday, Saturday **\$2.10**

LADIES' SILK GLOVES—Van Raalte, double tipped, all Silk Gloves, wrist length, shades of Grey, Fawn, Black and White. Reg. \$2.50 value Friday, Saturday **\$1.58**

WHITE HOSE—Plain White Hose, with fancy embroidered ankles, very popular line. Special **59c.**

SILK HOSE—Half Silk leg Hosiery, with Lisle top toe and heel, assorted shades for summer. Special **89c.**

LISLE HOSE—An Excellent line of plain Lisle Hosiery, in shades of Champagne, Grey, Cordovan, Navy and Black, unmatched for value. Special **39c.**

CASHMERE HOSE—Plain Black English Wool CashmERE Hosiery of the finest quality, up to \$1.75 value. Friday, Saturday **\$1.25**

LADIES' OXFORDS—Finest Black Kid Oxfords, leather lined, semi-broad toes, perforated finish and rubber heels. Reg. \$4.90. Friday, Saturday and Monday **\$3.48**



LADIES' VESTS—A Special Lot, 8 dozen only in fine White Jersey, sleeveless, strap shoulder, assorted sizes. Reg. 25c. Friday, Saturday and Monday **20c.**

CREPE NIGHT GOWNS—Very dainty night attire, for the warm nights; some in White, others in Pink, short sleeves, shirred waist, and they wash splendidly. Reg. \$1.25. Friday, Saturday and Monday **\$1.08**

CHILDREN'S MIDDY SKIRTS—White Jean Middy Skirts with body, box pleated, to fit 6 to 12 years. Reg. \$3.00 value. Friday, Saturday and Monday **\$2.59**

DRESSING JACKETS—Inexpensive Jackets for morning wear about the house, in mixed Black and White Cotton, 3/4 sleeve, round neck, belted and trimmed with rick-rack braid; sizes 38 to 44 inch. Reg. \$1.20. Friday, Saturday and Monday **94c.**

Fine Weather Needs Finer Apparel--The SHOWROOM supplies it economically.

MIDDY BLOUSES—Girls' sizes, 6 to 13 years, White Jean with Sailor collar, Black bow, cuff bottom, long sleeves, pocket. Reg. \$2.00. Friday, Saturday and Monday **\$1.79**

BATHING CAPS—The time is coming for general bathing. Have one of our rubber, tight-fitting Bathing Caps, in plain and assorted fancy colors. Special Friday, Saturday and Monday **19c.**

HAT FLOWERS—A whole box of pretty Forget-Me-Not in Pale Blue, shade, suits children's hats excellently. The Bush Friday, Saturday and Monday **25c.**

RUBBER BAGS—Nice for your vacation time—all rubber Brush and Comb Bags, in roll shape or ordinary bag shape; assorted shades. Reg. \$1.30. Friday, Saturday & Monday **\$1.05**

WAIST BELTS—Belts in fine Kid, others in patent leather, all White as well as many two-tone effects. Suitable for all Summer Dresses, Jumpers and Coats. Reg. 75c. Friday, Saturday and Monday **59c.**

SPORT JERSEYS—Finest Knitted Coat Jerseys, in pretty mixed shades; the newest thing for golfing, beach wear and all sports wear, side pockets. Y-neck; distinctly Summer weight; \$3.50 value. Friday, Saturday & Mon. Special **\$1.95**

BERTHE' COLLARS—The newest, fine net, frilled style collar, open at sides, in White and Paris shade, for round neck dresses and waists. Reg. \$1.00. Friday, Saturday and Monday **89c.**

GIRLS' COMBINATIONS—Embroidery trimmed White Lawn Combinations, to fit 2 to 12 years, cheaper than you can make them. Special Friday, Saturday and Monday **69c.**

JERSEY BLOOMERS—Finest Jersey Bloomers, to fit girls from 6 to 16 years, in Pink, Black and White. Special Friday, Saturday and Monday **27c.**

5 INCH RIBBONS—Handsome Dresden Ribbons in plaid stripe and plain Silks, Taffetas and Merve, all the newest and most popular shades; Rose, Holo, Tan, Gold, Pink, Cardinal, Saxe, Navy, etc. Reg. value for 80c. yard. Special **57c.**

BEAUTIFUL WASH FABRICS

ART CREPES—Really beautiful Crepes, on light and dark grounds, colourful and beautiful, blended shades, nice for kimonos or dressing jackets. Reg. 60c. Friday, Saturday and Monday **45c.**

CREPES—24 inch Crepes, delightful summer materials, in shades of Lemon and Apricot. Reg. 40c. Friday, Saturday and Monday **33c.**

GINGHAMS—1000 yards of pretty wash Gingham, bought at a Special price, almost any colouring you could wish for. Friday, Saturday and Monday yard **20c.**

VOILETTA—Plain Black Voiletta, 30 inch width, a summer fabric, for those needing something fine in black. Friday, Saturday and Monday **28c.**

RATINETS—Beautiful soft clinging Dress materials, in shades of putty, Mauve, Rose, Lemon, Sky, Navy and White, washes beautifully. Reg. 55c. yard Friday, Saturday and Monday **48c.**

WASH POPLINS—36 inch all white Dress Poplins, a serviceable, good wearing summer material, for ladies, misses and childrens wear. Special Friday, Saturday **36c.**

James Baird LIMITED



The Maritime Dental Parlors

Your duty to your teeth is essential to health and happiness. You cannot afford to neglect them any longer; but you can afford to join our great clientele to whom we tender courteous and invaluable services. Call for free examination.

Painless Extraction 50c.
 Full Upper or Lower Sets . . . \$12.00 and \$15.00.
 Crown and Bridge Work and Filling at most reasonable rates.

M. S. POWER, D.D.S.
 (Graduate at Philadelphia Dental College, Garretson Hospital of Oral Surgery, and Philadelphia General Hospital).
 P. O. Box 1290. Phone 62.
 176 WATER STREET.
 (Opp. M. Chaplin's.)

JUNKS

Kindling Wood
 Birch junk, finest quality for sale cheap; also dry kindling wood delivered daily to any part of city.

West End Wood Factory.

Box 1366 'Phone 1186
 dec12, eod, tr

If you wish to make a good job of your walls and ceilings—have them sound proof, well insulated and give them a beautiful finish use

TEN TEST FIBRE BOARD.

Prices can be had from

W. J. ELLIS.

Jan 30, 6 mos, eod

FOR SALE!

6 Surreys, 5 Buggys.

G. F. LESTER, HAMILTON STREET.

WE WILL GIVE YOU A Cool Reception THIS HOT WEATHER.

Quality Ice Cream.
 Ice Cold Drinks.
 Milk on Ice.
 Table Butter, C. C. Beef Tongue, etc. on Ice.
 Comfortable seats. Shop at your ease at

The Bee-Hive Store,
 27 Charlton St.,
 Arthur Walker.
 apr 5, 6 mos, th, s

MINARD'S LIVERY, LUMBER, MAN'S FRIEND.