

Ladies' Sealpax Athletic Underwear,

\$1.80 per Suit.

Just as comfortable as brothers, ventilated waistband, elastic waistband, soft fabrics, pre-laundered in sealed package; no dust, no germs.

Ladies' Jersey Rib Union Suits,

88c. to \$1.10 Suit.

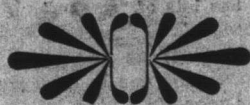
Low neck, short sleeves; low neck, no sleeves, lace trimmed.

Ladies' Jersey Rib Vests, 24c. to 60c. ea.

Low neck, V neck, short sleeves and no sleeves.

Ladies' Sample Wool Sweaters, 8.90 to 10.20

Travellers' Samples, Middy Slip-on and Sweater Coats, newest shades and styles at about half the regular price. A splendid opportunity to buy advanced styles at big savings.

**Toilet Counter Specials.**

ODO-RO-NO—The Toilet Water for excessive perspiration, guaranteed protection for your prettiest frocks and waists. Simple to use, no stains, no odor.

CUTEX—Cuticle remover, nail white, cake polish, stick polish, paste polish, cuticle comfort, compact sets, traveling sets and boudoir sets.

MARY GARDEN—Talcum Powder, Face Powder, Rouge, Cold Cream, Greaseless Cream and Perfumes.

MAVIS—Talcum Powder, Face Powder, and Boudoir Sets Rubber Sponges, Tourist Cases and Pullman Aprons.

FITZ CLEAN-ALL, 35c. Bottle.

A non-burnable cleaner for cleaning all fabrics, shoes and slippers of silk, satin, velvet, cloth or kid.

'Phone, No. 484.

BISHOP, SONS & COMPANY, Limited,

P. O. Box, 920, St. John's.

Mail Orders Receive Careful Attention.

Queen Quality SHOES

REG. U.S. PAT. OFF.

Your many footwear requirements in such strenuous times can be filled by these famous shoes

The new Queen Quality shoe creations fulfil the desires of the majority of women in the following manner:

Style without gaudy display.
Dependable leathers.
Harmonious colors.
Extreme foot comfort.

Thousands of women in this and other countries are continually enjoying these advantages.

Our store is the only place in town where these famous shoes may be bought.

PARKER & MONROE, Limited,
THE SHOE MEN.

Personal.

Mr. D. O'Neill, Bay de Verde, arrived in town yesterday. Mr. O'Neill's trap crews did remarkably well during this season, and are now engaged in preparing their catch for market.

Hon. W. J. Ellis, who has been in Canada and the United States on business, is a passenger on the express due at 4.30 this afternoon.

Capt. S. Noseworthy left for Nova Scotia yesterday to look after the purchase of a schooner for A. E. Hickman & Co.

Mr. A. Hearn, Bay Roberts, was in the city yesterday, on a brief business trip, and returned home again by last evening's train.

It's Easy Enough

to keep the liver right if you use Dr. Chase's Kidney-Liver Pills occasionally.

The liver gets lazy at times and when it does digestion is interfered with and the kidneys fail to act. You soon know it when the liver is awakened by this treatment, for headache, biliousness and stomach troubles disappear and you feel fine. This is an easy prescription for health and happiness.



"MADE IN GERMANY."

In the days of peace for the world of trade, they stamped their mark on the goods they made;

But never again will they stamp their name. For they have made it a badge of shame.

They've stripped it bare of its outward pride. And shown the greed and the lust inside.

And men will shudder when'er they see Hell's label red: "Made in Germany."

Before their eyes, dead men will float Who were left to die in an open boat. To the end of time, will picture rise Of demons high in the summer skies Seeking the haunts where the wounded lie.

To murder them as they hurry by. Nor all their skill nor their art will hide The captive boy that they crucified.

A little child with his right hand gone Will live when the years have travelled on. As the sign of the German heart and schools With the crimson blood of the babes in pools.

And the innocent dead, with their faces fair, Bombed by the onwards high in air. Will rise long after the war shall cease To shame the Hun in the years of peace.

Made in Germany! men will start As they see the badge of the German heart. On whatever that stamp of shame is seen, There will be the curse of a thing unclean.

They have fouled, with sin, what was once their pride. And they shall live by the world denied; For whatever that mark through the years is met, There will rise the scenes that men can't forget.

As Patron of the St. John Ambulance Association, Newfoundland Centre, I have pleasure in endorsing this appeal and stating that subscriptions may be sent to Mr. L. E. Emerson, Treasurer of the Cot Fund, St. John's, or to the nearest Stipendiary Magistrate.

C. ALEXANDER HARRIS, Governor.

St. John's, August 19th, 1918.

aug16.61

Express Passengers.

The following first class passengers are on the incoming express due this afternoon:—Mrs. J. Walsh, Mrs. H. Leigh, Miss E. Leigh, Hon. W. J. Ellis, T. M. Fyche, W. B. Richards, Jr., J. A. Chase, A. Bastine, T. Moore, A. Sargent, S. C. Dellaranchiere, J. E. Peach, T. Hayse, Geo. M. Nightingale, R. James, Miss B. Rose, Miss B. Snow, S. Soper, L. Rogers.

Stafford's Preparations

Stafford's Liniment for Rheumatism, Lumbago, Neuralgia and all Aches and Pains.

Stafford's Prescription "A" for Indigestion, Dyspepsia, Catarrh of the Stomach, Gastritis and Nervous Dyspepsia.

Stafford's Eborate for all kinds of Coughs, Colds, Bronchitis, Asthma and various Lung Troubles.

The above 3 Specialties have been for sale in Newfoundland for the past 5 yrs. and are for sale in over 400 stores. The orders we are continually receiving from that time certainly prove that all of Stafford's Preparations can be thoroughly relied upon.

DR. F. STAFFORD & SON,
Wholesale and Retail Chemists and Druggists,
St. John's, Newfoundland.

Fogota's Passengers.

The following first class passengers left Placentia by the Fogota yesterday:—G. G. Chesman, J. B. Hynes, S. Wilcox, S. Baker, J. A. Boone, H. Tessler, A. Cartago, W. Clarke, H. C. Hendry, C. W. Hynes, Captain Bellam, Constable Hibbard, Miss Sheppard, Miss Wilcox, Mrs. G. Pudge and child, Mrs. J. Kingsley, Mrs. J. W. Norman, and child, Mrs. K. Wilcox, Mrs. Capt. Dalton, Mrs. W. Dalton, Mrs. Const. Hibbard and two children, Mrs. M. Buffett, Mrs. A. J. Wood and child, Mrs. G. Vallis, Mrs. V. Collier, Mrs. L. Garland, Mrs. Legge, Mrs. Coulton, Mrs. R. Penney, Mrs. P. Pike, Miss Cluett, Sister Aloysius, Sister Xavier, P. Banfield, Galton, Lee, Blake, Kennedy, Gray, J. Cowan, J. Lewis, E. Hall.

Here and There.

When you want Minceed Collops, try ELLIS'.

POLICEMAN RETURNS.—Const. Hibbard, Burin, who was in town the past few days, returned to his station by the Fogota.

Every Saturday evening after 7 o'clock, Choice Ends of Beef, Mutton, Lamb, Pork will be sold at cost. ELLIS & CO., LTD., 203 Water Street.—nov29.

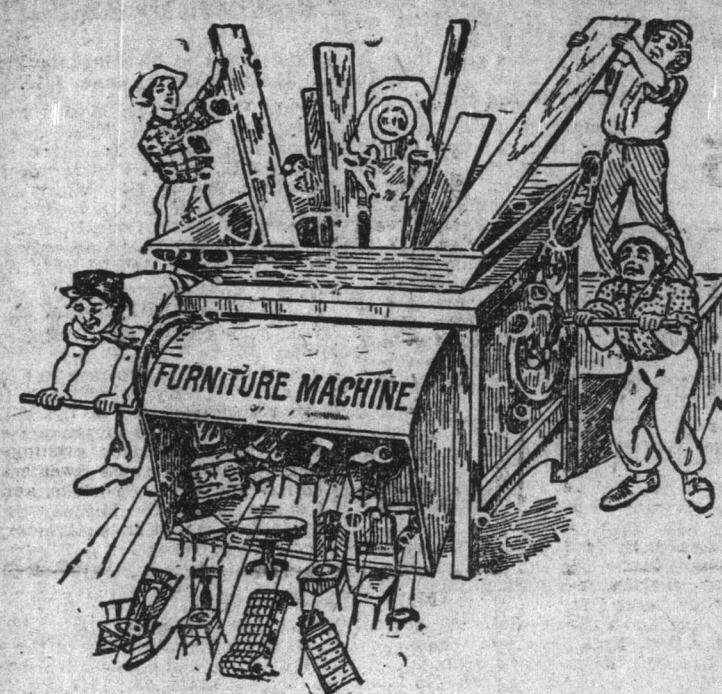
HAD TO ANCHOR.—A schooner beating in the narrows last evening mis-stayed and nearly went ashore near Chain Rock. She was forced to anchor, and a tug later towed her to port.

Our store is full of opportunities if you are looking to increase your savings account. Ladies' Fall and Winter Coats, \$12.50 to \$25.00. W. R. GOOBIE is just opp. Post Office. aug19.61

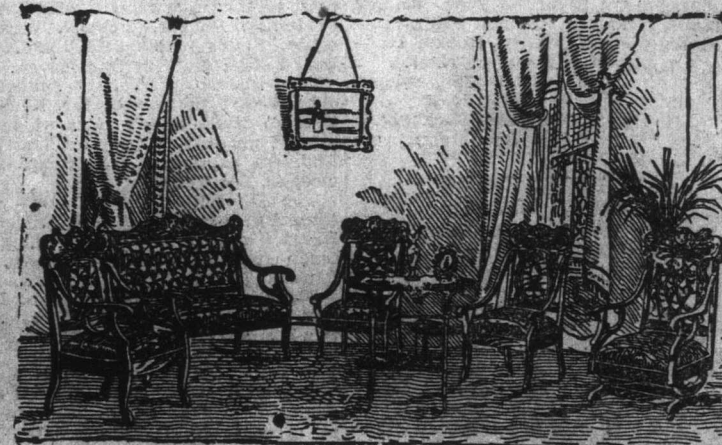
When you want something in a hurry for tea, go to ELLIS'—Head Cheese, Ox Tongue, Boiled Ham, Cooked Corned Beef, Bologna Sausage.

LABOR LEADERS COMING.—Messrs. Bastone and Moores, the Canadian Labor Leaders, will arrive on the incoming express. These gentlemen will address a public gathering of wage earners in the Casino tomorrow evening.

THE LATEST DRINK is Marsh's Black Cherry Wine, made by the manufacturers of Marsh's 'Par Excellence' Port Wine and soon to be placed on the local market. It's the nearest thing yet, and got more "go" in it than any other drink on the street.—(N20, eod, 1m)

From the Factory to the Home.

We have gone one step further this year. We actually cut the logs that make the lumber. Waiting for machinery that is being installed in building to cut same, so that it will go in one end of the building logs and come out the other end finished Furniture, thus saving all the middleman's profit. We can now say FROM THE TREE TO THE HOME.

Parlor Suites, Lounges, Wicker Chairs, Etc.

PARLOR SUITES—We have just received some special Covering and make to order as required. You can select your own covering, also designs for frame, &c., and have it made to suit yourself by skilled workmen and save considerable in prices, which range from \$30.00 to \$100.00.

The C. L. MARCH CO., Ltd.,
Corner Springdale and Water Streets.**Deserving of Decoration.**

(From the Toronto Globe.)

Decorations for service are the only distinctions that most Canadians regard with respect. But yonder, within the walls of a Berlin war prison, is an indomitable Scot who has earned recognition in a very unique and real way. His story comes to Canada with Hon. Dr. Beland, who was "among those present" on the memorable occasion. It is a story which thrills and inspires. Alone in his prison cell, in custody of a ruthless enemy, with foes in authority all about him, as the German city bells

tolled the midnight hour which ushered in the New Year of 1916, this patriot threw open the window of his cell, grasped the bars in both hands, and in strong, confident, resonant tones sang forth to the hostile world about him the strains of "Rule Britannia." British prisoners in other cells crowded to the windows, cheering and joining in the chorus. In the heart of the enemy's Capital this dauntless Scottish soul poured forth his challenge to his captors in his national song. This was no outcrop of an ecstatic moment. It was the deliberate thought-out intention of the man. It was his chosen greeting to the New Year. It was the voicing of his spirit. Prison bars could not con-

fine it. Threat of punishment or could not keep it still. There was no heroic surroundings as on the battlefield, no cheering comrades to spiro, no thrilling zest of conflict, impetus of achievement. Behind him far from friends, under-fed, alone the dreary darkness of his cell, and the power of a brutal and barbarous foe, this Scottish soldier—unconquered, undefeated—again the knell of Teuton aggression to world domination—"Prisoners or will be slaves." And Home-land dreams that it can conquer such souls!

MINARD'S LINIMENT CURES GOUT, RHEUMATISM, BRUISES, SWELLINGS, AND ALL PAINFUL AFFECTIONS.

SALE!**Beach Line Cotton Se the**

About 400 yards of these materials, mostly the new fashions, stripe effects, 36 inches wide, goods. It would not be impossible to buy a dress or two for next the prices down to induce the value per yard. Friday, Saturday, Sunday.

FRIDAY**Be on Hand these snow-white Int. Mar. Qu**

It was a fortunate purchase that we such splendid quilt values. has been praising their appearance their value; Quilts that are nice, ed, easy to wash, nice and light for a summer quilt. A service and plain hem. Regular values Friday, Saturday and Monday.

\$2.15**Towels, Sheets, Shams, and Table Cloths, etc.**

VERY Dainty SHAMS—A box of Lace and Insertion trimmed Pillow white linen make, 4 inch lace trimmings to grace the borders of a bed. Reg. 35c. each. Friday, Saturday and Monday.

PILLOW SHAMS—Inexpensive Pillow from strong white cotton and lace edge. Here are Shams for immediate sale. Reg. 35c. each. Friday, Saturday and Monday.

BREAKFAST CLOTHS—These come in make, good strong English Damask, full looking crimson band border, breakfast table a nice and cheerful lovely summer morning. Reg. 35c. each. Friday, Saturday and Monday.

LARGE TABLE CENTRES—Soft white tress with worked and scalloped shapes, heavily embroidered and openwork effects. Reg. 50c. each. Friday, Saturday and Monday.

AUGUST CLEAN**Sale of Miscellaneous Items About**

NECKWEAR—Some of our best and our newest in smart looking Silk Neckwear goes on sale this week, the long flowing and style, in plain, striped and fancy. A Tie to suit every whim. Special, Friday, Saturday and Monday. 95c.

DESSER SCARVES—Strong White Lace Scarves with pretty lace edging, and lace insertion to match, embroidered at ends, strong serviceable and lasting. Reg. \$1.30. Friday, Saturday and Monday. \$1.10.

CHILDREN'S WHITE HOSE—Only the smaller sizes, in plain White Cotton Lisle. These we sold at 35c. pair. Friday, Saturday and Monday. 24c.

Ladies' White S

All sizes in strong White Single High Heel, plain pointed toe. Reg. 35c. pair. Friday, Saturday and Monday.