

BELLISS & MORCOM

Air Compressors

Diesel Engines

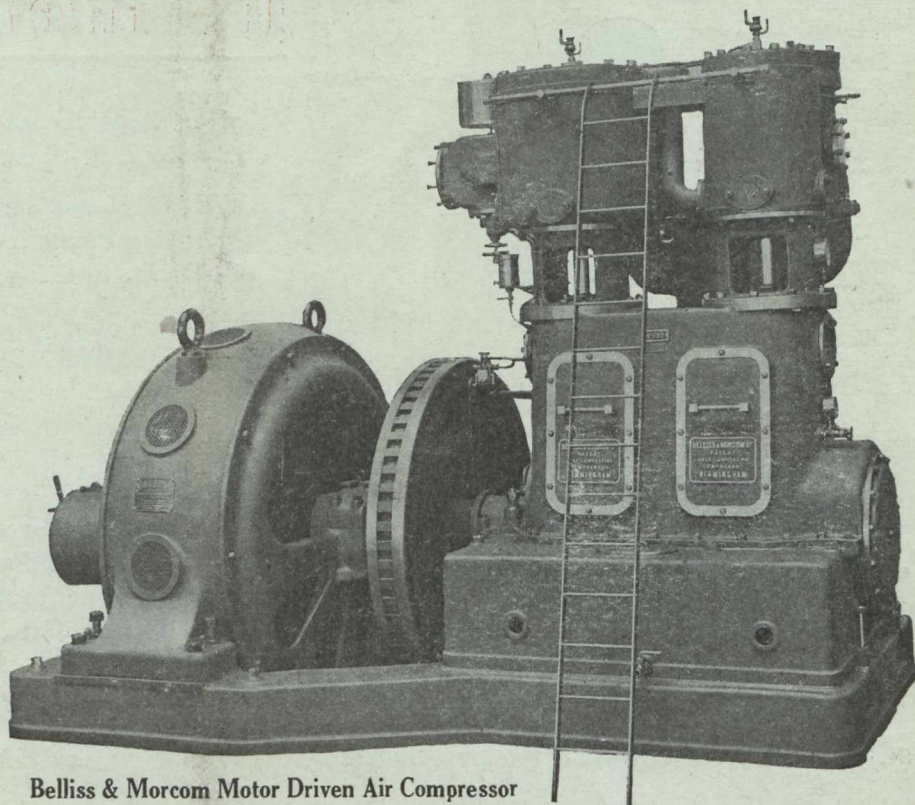
Steam Turbines

Condensers

Steam Engines

**LAURIE
& LAMB**

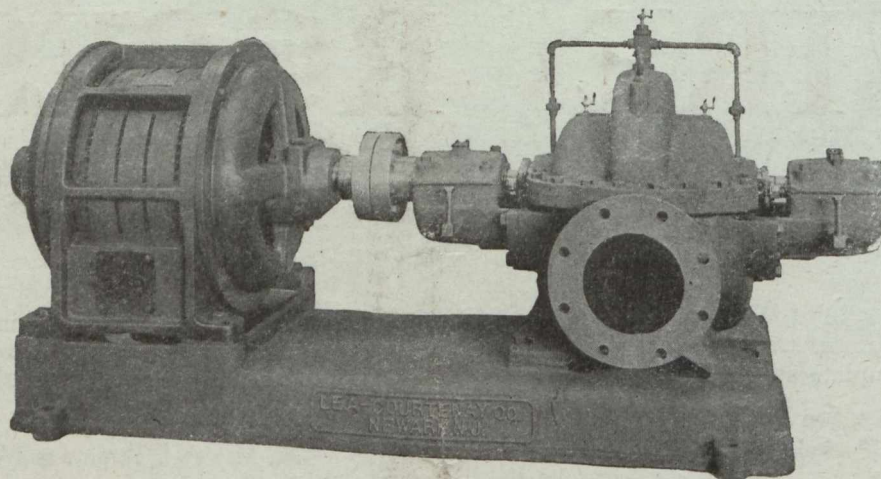
211 Board of Trade Bldg.
MONTREAL



Belliss & Morcom Motor Driven Air Compressor

For high heads at 1450 and 1750 R.P.M. without diffusion vanes, or greater speeds with turbine drive, the pump for satisfactory service is a Lea-Courtenay double-suction volute full bronze-fitted pump.—Series E. M.

A standard 8-inch motor-driven pump of this type. Ask for bulletin giving details.



Lea-Courtenay Centrifugal Pumps for every kind of pumping service.

FRASER & CHALMERS OF CANADA

GUARANTEE BUILDING

LIMITED

MONTREAL, QUE.