

War Prices

are being quoted our Dairy-men for their Dairy Products.

And with the increased demand and the higher prices you will all keep your "Milk Factories" working right up to the limit.

This, of course, doesn't necessarily mean that you, too, need be kept "on the jump" all the time.

Here's the point—Let a

B-L-K MECHANICAL MILKER AND A SIMPLEX CREAM SEPARATOR

help you take advantage of your opportunity.

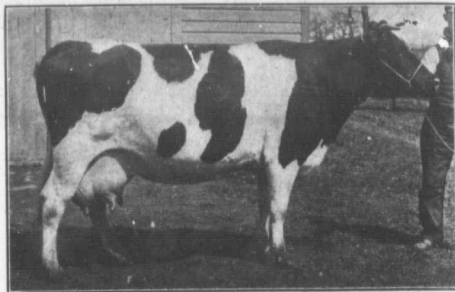
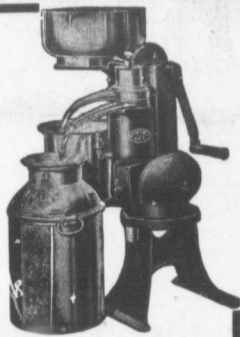
A 100-lb. SIMPLEX will separate your milk with less work than 500-lb. machines of other makes, and one of the many big things in favor of the B-L-K is that the dairyman can easily produce Clean and Sanitary Milk in the ordinary dairy barn. CLEAN MILK MEANS A CONSTANT DEMAND. We'll gladly give you an estimate of just what it will cost you to put in a B-L-K Milking Machine to save you all the old-time hard work of milking your cows. Send us rough plan of your stable and tell us how many cows you want to milk.

Special Notice to Dairymen: You know our Headquarters is the Dairy Supplies. Place your order with us early. We can serve you this year even better than ever.

D. Derbyshire & Co.

Head Office and Works: BROCKVILLE, ONT.

Branches: PETERBOROUGH, ONT. MONTREAL and QUEBEC, P. Q.
WE WANT AGENTS IN A FEW UNREPRESENTED DISTRICTS.



Capacious Bredly Productive.

Keyes Segls Walker Pieterie as a 4 yr. old combines the ideal points of the Holstein. Her record—Milk, 1 day, 58.59 lbs.; 7 days, 431 lbs.; 30 days, 2,708 lbs. Butter, 7 days, 23 lbs.; 30 days, 98.31 lbs. Weighing 1,810 lbs. at 4 yrs., she is typical of the animals in the herd of Ed. B. Purdell, of Bloomfield, N.Y. Sires from such females are the ones that maintain the productive capacity of Holsteins. See notes elsewhere.

Electric Installation

Professor Chas. A. Wheeler, Connecticut Agricultural College

LIGHTING by electricity is practical on the farm and is also economical where power is available for charging a battery, as for example in connection with the pumping of water by a gasoline engine.

There are a number of batteries on the market. The most practical one, considering that a farm battery will not have skilled attendants, is in my judgment, the Edison Storage Battery. This battery is twice as expensive as some of the other makes but it is far more rugged and is guaranteed to operate efficiently for four years. The college has had a ten-cell battery on trial for three months and has found it excellent.

With the 10 cell battery the voltage of the system is 12 volts, each cell giving 1.2 volts. This low voltage would be economical only for very short distances as within one building. If distances up to say 300 feet are to be covered the voltage should be about 30, requiring 27 cells; for longer distances higher voltages would be economical, the ordinary city lighting systems using 110 volts. The recently invented nitrogen bulb, which is a tungsten bulb filled with nitrogen gas instead of being emptied of air, is suited to low voltage only and is twice as efficient as the ordinary tungsten lamp. Herein lies a big

economy in the low voltage farm lighting system.

Management Pointers.

A battery stores the power which is put into it by an electrical generator, which of course is driven by a gasoline engine or otherwise, and gives out the power again in the form of light or in running small motors. Of the power put in about 75 per cent. is taken out, i. e., the battery is 75 per cent. efficient. The power necessary in charging varies from a half horsepower for ten cells to 15 horsepower for 100 cells of the largest size. An economical arrangement is to charge the cells at the same time that the engine is being run for pumping and to have the cells of such size that the tank and the storage battery will last about the same number of days before being refilled.

Figuring 1 1/2 pints of gasoline per horsepower hour and gasoline at 20 cents per gallon the cost per kilowatt hour is eight cents, two-thirds the amount usually paid for lighting in towns and cities. With a storage battery and a nitrogen bulb the farmer can get twice as much light for eight cents as most electricity users now get for 12 cents, so that farm lighting by electricity is economical in comparison with village or city lighting.



Machines Such as These On a Farm Ensure Dairy Profits.

A lineup on the farm of Ed. B. Purdell, Bloomfield, Ont.

COUPON.
Canadian Potato Machinery Co., Limited,
493 Stone Road, Galt.

Send me FREE Book, "Money in Potatoes."

Name

Address

71-A

4-ROW SPRAYER

An Acre in 20 Minutes

Fully developed tubers grow on healthy plants. Keeping them healthy is done quickly and thoroughly—twenty minutes will do an acre with an O.K. 4-Row Sprayer.

No excuse for not spraying well and often. Four rows at once, thorough coating on leaves and stalk.

Can you afford to take the chance of losing your crop? Will you let bugs and blight get in their work again this year? Make your profits sure.

FREE to potato growers. 48-page book, "Money in Potatoes."

CANADIAN POTATO MACHINERY CO., Limited, GALT, ONT.

Save Your Profits
Mail the Coupon TO-DAY

MADE IN CANADA

Trade is

VOL. 2

The

A YEAR

bert

ton,

Canadian

ronto. His

great new

pure-bred

large on the

'connected

and breeder

ractors. W

think of the

farming, and

then "some"

"The heav

use in the

East," was

ride of just

counted no

covered with

iron and a

look carefull

and, in a m

were of all k

tractors. T

didn't pay

cell farm p

Mr. Gilbert

store would

tractor expec

Since then, I

I express the s

Western Cana

ed contentio

placed on the

tractor, the k

six to ten hor

as much on t

with 14 inch

work from ru

silo. This lig

the horse, an

a homeless fa

if being succ

and the farm

doubling the

able to the re

hundreds of d

market. Many

late failures, o

but a few have

question has b

farmer with w

farm, say, 200

The possiblit

are well illustr

ltoth on his 2

Mr. McIntosh

part of one sea

been satisfact

he plows about

teams. Last ye

his teams play